



# DIVERCITY

November 2021



FROM THE  
CHAMBER



CITY NEWS



ARTS IN  
FOCUS



SHAPE  
OUR CITY



COMMUNITY  
SPIRIT



WHAT'S ON

## From the Chamber

Port Phillip is well and truly open for business with our streets and beaches buzzing post-lockdown.

I hope you have been enjoying revisiting your favourite places, whether it's sitting down for a delicious meal or snapping up a summer bargain.



Our facilities are also reopening, with double vaccination required for face to face services considered medium to high risk for COVID-19 transmission. We have concierges on hand to help customers as they get used to the new system. A Service Delivery Vaccination Policy was adopted at our most recent Council Meeting and vaccination requirements, and alternative service options for those who are unvaccinated, can be found on our Council services vaccination requirements page (<https://www.portphillip.vic.gov.au/people-and-community/coronavirus-covid-19/council-services-vaccination-requirements>)

There is so much to look forward to this summer, from entertainment to more outdoor dining with generous support from the Victorian Government's COVID safe outdoor activation program.

Whether it's queueing for a popular dining experience or perhaps waiting a little longer to access one of facilities, I ask everyone to remain patient as we all adjust to the new COVID normal and continue to stick together as a community.

I am delighted to share with you that we decided to continue our popular Communal Food Organic recycling hubs trial until January 2023, expanding it from three to six sites. Look out for announcements over the coming months about these new locations.

In further environmental news, we are producing a summary of our response since declaring a Climate Emergency in 2019 and looking at how we may develop a five year action plan to be included in our Council Plan. You can find more information at: <https://www.portphillip.vic.gov.au/media/mzxl4eds/report-14-1-notice-of-motion-cr-martin-climate-emergency.pdf>

We also decided to temporarily hire a mobile CCTV while awaiting the outcome of a grant application to buy a permanent unit. This will be a useful tool for Victoria Police when looking out for anti-social behaviour, including hooning on our streets. We will be playing our part for a safe and fun summer through our annual summer management program.

Councillors listened to some passionate members of our community about access for dogs on beaches. This topic always involves a range of views and we are doing our best to balance the needs of all beach users over the busy summer season. We have taken a “big picture view” by including an action in the draft Public Space Strategy to undertake a review of all on-beach dog restrictions instead of implementing separate trials.

There is lots more news coming about how we are activating Port Phillip and I wish you all a safe and fun summer as we once again embrace all our beautiful City offers.

Regards,

Cr Louise Crawford  
Mayor, City of Port Phillip



## Play your part for a safe summer

Visitor numbers to Port Phillip’s popular parks and beaches are heating up and we’re asking everyone to play their part by supporting our 2021/22 summer management campaign.

Hundreds of thousands of visitors flock to our foreshore every year over the warmer months. Numbers are likely to be even higher this summer as some people who may have gone interstate or overseas to holiday may decide to stay within Victoria due to lingering travel uncertainty linked to the COVID-19 pandemic.

Still known and loved as Melbourne's seaside playground, St Kilda plays host to many beach-goers. To help keep our iconic beach safe and clean, the annual St Kilda Foreshore Alcohol Ban is in force from 1 November to 31 March.

Beach and foreshore reserves (including Catani Gardens) from Langridge Street to Thackeray Street are included in the ban, which now includes unopened containers.

Victoria Police, which has announced it will have a strong summer presence at bayside beaches, is responsible for enforcing COVID-19 restrictions and the St Kilda Foreshore Alcohol Ban, which carries a \$200 fine. Visitors and residents can still enjoy drinking responsibly on foreshore areas outside St Kilda, between 12 pm and 8 pm, except when bans apply across the City on key public holiday periods.

Alcohol bans are just one component of our extensive summer management program to keep Port Phillip safe, clean and fun for everyone.

Stopping litter, especially glass, from covering public spaces or travelling into the Bay and harming marine life is also crucial to achieving a safe and clean summer. We have increased beach cleans and bin collections and our permanent glass ban for beaches and foreshore reserves and park will be enforced by Local Laws officers during their regular patrols.

While we welcome visitors to our City, it's important everyone plays their part so we can all enjoy summer outdoors.

Anti-social behaviour, including hooning, is never acceptable. We are assisting Victoria Police to hire a mobile CCTV trailer for them to use at the foreshore or on our streets as a monitoring and evidence gathering tool. Under this six month trial, the trailer will be moved around to locations agreed to by our Council. The outcome of Government grant applications to buy a permanent mobile CCTV should be known soon.

### **How to play your part**

Follow all alcohol and glass bans. There will be a total alcohol ban in all public places in Port Phillip, including beaches, parks and streets, on Christmas Day, New Year's Eve and New Year's Day. The Australia Day municipal-wide alcohol ban is from 8 pm on 25 January until 12 pm on 27 January. A 24-hour ban on alcohol on all Port Phillip streets and footpaths already exists.

Dispose of your rubbish responsibly by binning it or taking it home

Plan ahead and consider visiting a less crowded beach or park during peak demand

Maintain physical distancing, wear a face mask where required, and practice good hand hygiene

Don't set up camp. Camping is not allowed on any Council land or public place, including in vehicles, tents and caravans. Local laws officers are looking for illegal campers when patrolling foreshore car parks, reserves and streets including in the early morning.



## Carlisle Street traders band together

As our City emerges from lockdown, Carlisle Street business owners have formed a group to promote this diverse destination.

The newly created Carlisle Street Traders Association (CSTA) will showcase all their street offers, from cosmopolitan cafes and restaurants and cool bars to independent retailers including bakeries and butcher shops.

The formation of the CSTA was supported by seed funding from our Council.

Following the local economic emergency declared by our Council in September 2020, council officers spoke to traders to understand how they could be further supported.

During these visits, many Carlisle Street traders said they were keen to form a traders' association so they could work collectively to promote the street.

CSTA President Mike Byard said the members have already provided lots of different ideas during brainstorming sessions. "I think the main objective is to beautify the area and to lift the profile of Carlisle Street," he said.

Mr Byard owns Pretty Little, a restaurant along Carlisle Street which functions as a communal dining eatery.

He believes many factors contribute to Carlisle Street being a special place to trade and visit.

"I think a lot of the traders live in the area and have done so for a very long time. It's that sense of pride that people get for their home," he said.

"It's why people who live in Melbourne are passionate about Melbourne. When you condense that down again to the City of Port Phillip or a smaller community like Carlisle Street, I think people here have a sense of pride for where they live and where they work.

"I love the diversity of Carlisle Street. My neighbours to my right are Japanese, my neighbours

to my left are Syrian, they're Israeli on the other side of them, across the road I've got Turkish neighbours and there's plenty of Jewish business owners in the area as well."

Mr Byard said Carlisle Street offers an amazing array of shops.

"There's a quite a different range here. We've got everything from your local optometrist, dentist and doctor services to hairdressing salons and barbers in the area.

"It's one of those streets where we still have access to fresh local produce. We've got two really good grocers in the area, we've got a couple of great bakeries and butchers. You can get everything you need for the week here while supporting small business."

In February, Council provided \$20,000 in seed funding to three precincts (Carlisle Street, Ormond Road and Clarendon/Coventry streets) for traders to investigate forming trader associations. The funding was sourced from the reallocation of funds from the cancelled 2021 St Kilda Festival.

CSTA Vice President Igor Vainer (Vainer Optical) has also joined the Prosperous Port Phillip Business Advisory Group, an invaluable group of traders and small business representatives who are guiding Council as to how they can best support business as we emerge from the pandemic.

"Prior to having the Association, we were all just independent businesses trying to have a bit of a voice," Mr Byard said.

"Now we are an association and we are amalgamated business owners, I feel like it's going to help us communicate with one voice and work with Council."

For those community members who haven't visited Carlisle Street recently, there are many good reasons to go down there and grab a coffee, some great fashion and a scrumptious meal.

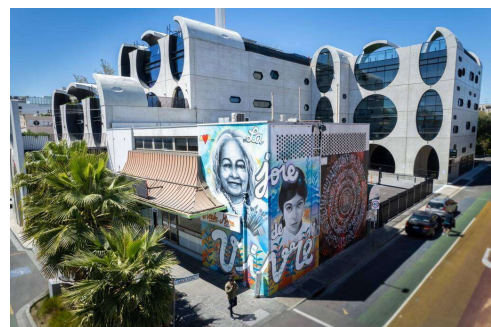
For more information on other business groups and trader associations in the municipality, visit Council's Business Associations and Groups page  
- <https://www.portphillip.vic.gov.au/council-services/business-in-port-phillip/start-or-buy-a-business/business-associations-and-groups>

## City News

### Fitzroy Street welcomes new neighbours

Fitzroy Street has some exciting new additions in the second expansion of the Renew Fitzroy Street (RFS) project.

These newcomers are yet another reason to come and enjoy this St Kilda destination, whether to shop, enjoy a drink or bite to eat or get creative at a workshop.



As well as providing a hub for these creatives, 77 Fitzroy Street is also home to a magnificent mural of St Kilda cultural icon Mirka Mora as a young and older woman.

Painted by muralist Tom Cerdan, the mural was commissioned by the Fitzroy Street Business Association and funded by a Love My Place grant from our Council.

Mirka's creative influence is further celebrated in Aperture f/77, a moving image projection program running over the next six months in a dedicated purpose-built window space at 77 Fitzroy Street as a pilot collaboration between Renew Australia and our Council.

Mirka and Georges Mora's Home Movies, in collaboration with the Jewish Museum of

Australia, is the first iteration of the Aperture program, able to be viewed day and night. Information about the individual programs is accessed via a QR code on the Aperture f/77 decal frame surrounding the viewing window.

All this activity comes as Fitzroy Street continues its rejuvenation. A gallery and several new restaurants are opening as well as the post-lockdown reopening of the Victorian Pride Centre, which has already become an important landmark for locals and visitors.

Under the RFS program, landlords donate vacant shops to creatives with rolling 30-day rent-free licences negotiated by Renew Australia. This gives the new businesses time to test ideas within a commercial market without committing to a lengthy commercial lease agreement.

Our Council contributed \$75,000 to the project, with matching funding provided by the Fitzroy Street Business Association.

The new creatives join eight existing Renew Fitzroy Street businesses located in another five shops.

Meet the 77 Fitzroy Street newcomers

Farm Goat: Handcrafted cold pressed goat milk soap (relocated from another Renew shop). <https://farmgoat.com.au/>

Greg Egan - *I'm looking forward to being part of a shared space with a bigger making area and smaller retail showcase to focus more on my own product range. Now I am starting to see the business grow. It's so great to be part of Renew Fitzroy Street to bring my creative business to life.*

Macuject: a new technology start-up in the medical device artificial intelligence field. Their mission is to end preventable blindness from diseases such as macular degeneration.

Stephanie Mauger - *As Macuject enters a new phase of growth we're incredibly excited to be able to come together to keep pushing the boundaries of innovation. We couldn't be more excited than to be doing this in our new Renew space.* <https://macuject.com>

Kirstin Burgham, a well-known local ceramist who will run workshop classes suitable for all abilities and have a small range of work available for purchase. <https://www.kristinburgham.com/about>

Kristin Burgham – *I can't wait to get Room for Clay workshops up and running. Renew Fitzroy Street is giving me the opportunity to start workshops for the community and to share in the joy of making with clay. All will be welcome at 77 Fitzroy Street.*

Artist Sarah Tracton will activate the hallway as a gallery with her stunning ceramic lighting. <http://www.sarahtracton.com/>

Sarah Tracton - *Showcasing my handcrafted lighting in 77 Fitzroy Street is a brilliant opportunity to share my art and add to the ambience of this vibrant neighbourhood.*

A parking area at the back of 77 Fitzroy Street is planned for pop ups and festival activations.

## **Communal food organic recycling hubs trial extended and expanded**

National Recycling Week is the perfect time to announce that we extended our food organic recycling hub trial to run until January 2023 and expanded it to three more locations in the City in addition to the existing hubs.

This will give our residents an option of six Food Organic recycling hubs across the City.

We introduced the communal food organic recycling hub trial for three sites across the City in May 2021 to provide a resource for the community to recycle their food waste. The trial was due to end this month but due to high demand, we have extended and expanded it to six sites until January 2023.



A communal hub was introduced in response to the City's needs. Port Phillip has some of the highest density housing in Melbourne. Households with little yard space or those living in multi-unit develops may not be able to accommodate an additional bin for recycling food waste. Recycling hubs provide these households with an opportunity to dispose of food scraps and leftovers sustainably and diverting them from landfill.

During the initial six-month trial, we diverted approximately 28 tonnes of food organics material from landfill. This is a fantastic result, one that demonstrates a sustainability-conscious community, eager to do the right thing. With the extension and expansion of the trial, we will reach a wider population and we expect even more participation in the recycling hubs program.

Our existing hubs are located at:

- HR Johnson Reserve, St Kilda West
- Lagoon Reserve, Port Melbourne
- Rats of Tobruk Reserve, Albert Park.

These locations will continue to serve the surrounding areas. Look out for forthcoming announcements of three additional hubs as we expand the trial.

## Mayoral election

The Special Meeting of Council (Election of the Mayor) has been rescheduled from Wednesday 10 November and will now be held on Wednesday 17 November from 5.45 pm.

The Ordinary Meeting of Council to be held 17 November 2021 will now start at the later time of 7 pm.

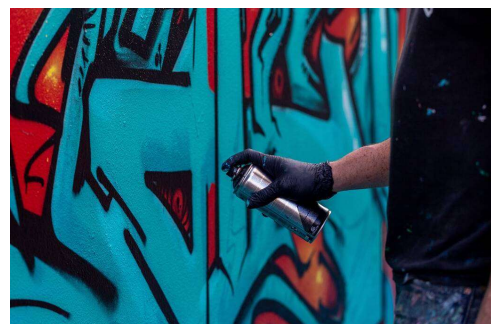


Please check Council's website closer to the date of the meeting for the latest advice regarding public attendance.

Read more: <https://www.portphillip.vic.gov.au/about-the-council/council-meetings/2021-meetings-and-agendas>

## A splash of colour for St Kilda Junction

With summer around the corner and lockdown lifting, St Kilda is re-emerging as a vibrant home of art and culture. The easing of restrictions means Melbourne artists are eager to get back to the creative work that helps define our City.



In celebration, we've partnered with Department of Transport, VicRoads and Yarra Trams to engage 71 Melbourne artists to complete murals across the St Kilda Junction area.

St Kilda Junction connects us to our City through walkways, underpasses and trams. It has long been a hotspot for graffiti and is often perceived as unsafe. Illegal graffiti in tunnels and underpasses damage tunnel walls, directional signage and lighting. This makes these areas uninviting for pedestrians and as we emerge from long periods of lockdown, our residents and visitors deserve an inviting, colourful and safe area to move and connect.

Artworks will be themed 'Welcome to St Kilda' providing an instantly recognisable sense of place and pride in our community's heritage, culture and history.

One of the flagship pieces of the project will be painted across the St Kilda Junction tram stop which is ideally positioned for these artworks to provide a 'gateway' to St Kilda, reflecting our community's unique culture and values.

Public art transforms and beautifies the landscape of our community. Street art has also been shown to help prevent the spread of illegal graffiti and reinforce our community's character, while helping to brighten up and enhance the beauty of the local area.

As a graffiti deterrent, street art not only creates safer, vibrant public spaces, it reduces costs to the community by decreasing the need for monitoring and removing illegal graffiti.

By transforming St Kilda Junction into a colourful and artistic community space, we are optimistic that residents and visitors will feel safer using the walkways and tunnels to get around the area. That optimism is echoed by our 71 artists who are excited to be reimagining this space for our community coming into the summer months and beyond.

Work will be completed on the St Kilda Junction murals from Saturday 20 November to Tuesday 23 November.

## Rainy season

Now is a great time to think about flood preparation as Melbourne typically receives short and intense bursts of rainfall from November to January, which can lead to flash flooding around our City.

Elwood, Balaclava, St Kilda, Port Melbourne and South Melbourne are particularly prone to flooding as they are on low-lying land.



Making preparation even more timely, the Bureau of Meteorology (BOM) has confirmed Australia is currently within a La Niña weather pattern. That means there is high possibility this summer of increased rainfall across much of eastern Australia, including Melbourne.

What you can do to prepare:

- Establish if your property is at risk of flooding. Check these maps and, if you're new to the area, think about asking your neighbours about their experiences.
- Download the VicEmergency App from the App store or Google Play to receive warnings about floods.
- Use the 'Get Ready' menu in the App to help create an emergency plan.
- Prepare your home by making sure gutters are clean and there is no debris around your home that could block a drain or become dangerous during a flood.
- Protect your important property (passports, documents, valuable photographs) by storing it somewhere high up in your home.
- Check your insurance covers flooding from stormwater or storm surges (depending



where you live) and not just from a burst hot water system.

As part of our efforts to help create a prepared and resilient community for severe weather events, we worked with Melbourne Water to develop a Flood Resilient Guide to Retrofitting Your Home. While the Guide has been created for existing flood-affected homes that have not been built to relevant flood protection standards, it also contains useful information for those planning to build.

Other severe weather resources are available from organisations including our Council, Melbourne Water, Emergency Management Victoria and the Victorian SES.

Since 2018, we have invested more than \$3.5 million on a program of CCTV mapping, inspection and cleaning of our drainage network to ensure it is operating optimally. Inspections and cleaning have so far focused on known flood hot spots including Elwood and South Melbourne.

This program has resulted in almost all hot spot flooding on Council roads being eliminated and the removal of 3600 tonnes of dirt, sand, tree roots and other debris from the pipe network.

Our efforts to mitigate flooding are continuing, with our ten year Council Plan including more than \$10 million to be invested in maintaining and upgrading our stormwater network.

## Eight more reasons to Love My Place

Roller skating and roving carols are among eight community focused projects funded under the 2021/22 round of Port Phillip Council's Love My Place (LMP) grants.

A mural of drag legend and St Kilda identity Renee Scott (1951-2012), to be painted near the Victorian Pride Centre in Fitzroy Street, is also part of this year's \$100,000 funding pool. This follows a mural of St Kilda cultural legend Mirka Mora, funded under the previous LMP round, delighting passers-by in Fitzroy Street.



Mayor Louise Crawford said residents, organisations and businesses were each awarded between \$7000 to \$15,000 to help bring their creative ideas to life.

"Love My Place is all about bringing activation and imagination to our public spaces to be enjoyed by residents and visitors. As we emerge from lockdown, these fantastic projects will add to our City's reputation as cultural and creative hub," Cr Crawford said.

The 2021/22 Love My Place recipients are:

### **Delightfully Bewildered**

Feather boas, wild handmade costumes, outrageous wigs and a stage presence like no other, the colourful, hand-painted image will depict Renee Scott on stage in full drag, surrounded by images of her love for animals.

### **Blackout Experience, Summer Edition**

The Blackout Experience Summer Edition is a powerful and vibrant display of live music that will contribute to reactivating Catani Gardens. It will also encourage those who identify as Black, Indigenous and People of Colour (BIPOC) and their allies to come together to celebrate in meaningful ways what it means to be a proud Victorian.

## **Peanut Butter Jam Roller Events**

A series of local community roller skating and blading event to be held four times over a six-month period from November to May 2022. These events will be created in collaboration with not-for-profit skating group Recreational Rollers, as well as Malt Shop Rollers.

## **Kinder Centenary Celebration**

A mural depicting the natural environment, including native plants and birds, in a simple but creative way will feature on the facade of Lilian Cannam Kindergarten, South Melbourne. The mural will also acknowledge our First Nations peoples, 100 years of committed service delivery to Port Phillip families and the importance of preserving this heritage into the future.

## **Music in the Glade**

Gasworks Arts Park will host fortnightly Friday night Music in the Glade events across summer. These events will feature live entertainment complemented by local food truck operators.

## **Lakeside Carols Street Party**

Lakeside Carols takes to the streets for a busking carols night. Wander the streets, pick up tasty treats from local cafes and restaurants and start your Christmas shopping while listening to amazing performers performing Christmas classics.

## **Alternative Futures**

Six unique performances written by Theatre Works resident and guest writers will take audiences on a roving journey through Acland Street Village to share fantasy-filled futures. Performed in unexpected nooks, crannies and iconic public spaces, Alternative Futures provides a radical and hopeful outlook for one of St Kilda's most treasured community hubs.

## **Elwood Canal Festivity**

Held in March along the grassy banks of Elwood Canal between Foam Street and Wave Street, a community picnic event will feature live music, fun and games, including a rubber duck race to raise money to support Indigenous habitat restoration along Elwood Canal.

## **St Kilda Esplanade Market returns**

The St Kilda Esplanade Market is back.

Residents and visitors can again enjoy the Market's offerings following its 31 October reopening.

For over 51 years, the St Kilda Esplanade Market has been showcasing the best of Melbourne's art, craft and design every Sunday set against the iconic backdrop of St Kilda foreshore.

The Market features unique stalls exclusive to the St Kilda Esplanade Market filled with the highest quality creative art, fashion, accessories, homewares, artisan foods and beautiful products to inspire and delight, many of which you won't find elsewhere.

New products are added weekly so there's always something fresh and exciting – which is exactly what you would expect from St Kilda. With some of the funkiest Melbourne and Australian makers and designers around, you'll find that perfect, individually handcrafted gift.

There's something for everyone – even your pets. Shop for jewellery and leather, clothing and



textiles, paintings, gift cards, glassware, body products, ceramics and toys.

Best of all, with every purchase you are supporting local small businesses which are passionate about creativity.

Located on St Kilda's stunning Esplanade (right next to Luna Park), getting to the market is an easy 15-minute ride from the City on trams 16 or 96. If you're driving, plenty of parking is available nearby.

The Market has resumed its regular schedule of every Sunday from 10 am to 5 pm. So, head to the Esplanade and bask in the bayside beauty as you wander among the stalls. Enjoy delicious treats as you peruse a range of unique gifts or find something for yourself – it's a perfect Sunday in St Kilda.

Looking to set up your own stall? The St Kilda Esplanade Market is always interested in hearing from new potential stall holders.

For more information about the market, including how to become a stall holder, visit the St Kilda Esplanade Market website - <https://www.stkildaesplanademarket.com.au/>

Market goers are reminded to use the QR codes to check in as provided and to ensure social distancing measures are followed.

## Prize winning posters promote recycling

For National Recycling Week, we asked our local primary school students to submit a poster to educate the community about what goes in our yellow recycling bins.

Every poster we received was artistic and showed a knowledge and passion about recycling. That's why it was so difficult to pick a winner.

After careful consideration and discussion, our judges chose artworks by the following young people as the winners:

- Our first prize winner is Jessica Gibbs in grade 5 at St Kilda Park Primary School. Jessica will receive a \$100 voucher from Coventry Bookstore in South Melbourne.
- Our second prize winner is Chloe Saliba in grade 2 at St Kilda Park Primary School. Chloe will receive a \$50 voucher from Coventry Bookstore.
- Our other second prize winner is Ryka Fregon in grade 5 at Albert Park Primary. Ryka will receive a \$50 voucher from Coventry Bookstore.

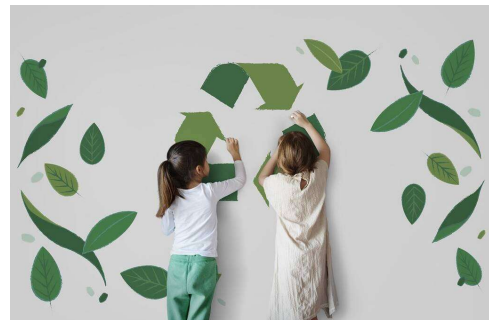
Jessica's piece makes creative use of the everyday materials and clearly shows what can and cannot go into our yellow recycling bins. The poster includes useful facts and tips and demonstrates a deep knowledge of the recycling process.

Ryka's poster cleverly uses her own photo of one of our beloved local seagulls to let us know what to recycle as well as addressing and clarifying some of the common mistakes people make with what goes in their yellow recycling bins.

Chloe gives us a crash course in artistically representing how to recycle with a collection of examples of what can and what cannot be put in our yellow recycling bin.

Happy Recycling Week to all of our budding young artists who deserve our respect and admiration for both their creative talent and their commitment to a greener future. Congratulations to Jessica, Chloe, Ryka and thank you to everyone else who submitted their fantastic artwork.

To view the winning works, visit: <https://www.portphillip.vic.gov.au/about-the-council/news-and-media/creative-kids-make-posters-to-teach-the-correct-way-to-use-our-yellow-recycling-bins>



## Paw patrol

While there's still plenty of options for our four-legged friends to enjoy some summer fun, it's important to remember that beach access restrictions for dogs at some locations change from 1 November to 31 March.

This is to balance the needs of all beach users during the busy summer season.

Please check our website for more information, including great parks and dog beaches to take your pooch. And don't forget to carry dog litter bags or containers to help keep our streets, parks and beaches safe and clean over summer.

Read more: <https://www.portphillip.vic.gov.au/council-services/pets-and-animals/dogs-on-beaches>



## New infrastructure works on the way

Over the last month construction began on more infrastructure projects fully or partially funded by an Australian Government program in response to the COVID-19 pandemic.

More than \$3.4 million has been awarded across eight projects under the Australian Government's Local Roads and Community Infrastructure (LRCI) Program to help us deliver improved community infrastructure and to support local jobs.



Construction has begun on a number of these of these projects:

### Wattie Watson Oval at Elwood Park

The upgrade to the oval will provide a durable high-quality playing surface on the oval into the future.

These works are part of an upgrade project supported by Sport and Recreation Victoria with additional funding through the Australian Government's LRCI program.

The project forms part of the ongoing program of playing surface renewals at Port Phillip sports grounds to meet standards required for current and future participation levels. The project must be undertaken in the summer months where there is lower rainfall and temperatures are ideal for turf supply and establishment. During reconstruction, Wattie Watson Oval will be closed for six months.

### Point Ormond Reserve

We're building a new playground and improving the park for a more vibrant and accessible public space at Point Ormond Reserve. In recent years, the condition of the playground equipment has steadily declined and recently we needed to remove the playground due to its poor condition and ongoing safety issues.

Our concept plan for a new playground responds to this special location, catering to all ages and abilities and will meet the current Australian Standards.

As part of these works, we have also considered improvements to the picnic and barbecue areas and pathways to and around the reserve. This includes the pathway to the Beacon Hill Lookout. Key improvements at Point Ormond Reserve will include new trees and garden bed, new paths between the playground and the existing Point Ormond lookout path and Bay Trail, improvements to access around Point Ormond Lookout and new barbecue areas including a

new picnic shelter.

### Garden City bike corridor connection upgrade

The Garden City Bike Corridor has been designed to improve connections for bike riders by linking Garden City Reserve to the Sandridge and Bay Trail shared path networks. The project is designed to improve access for bike riders and make Beacon Road and Swallow Street safer for all users.

The corridor is an important bike route for recreational and local bike trips, and is a key action in our Move, Connect, Live Integrated Transport Strategy, providing a link between popular destinations in the Port Melbourne area.

### Landscape Improvements at the McGregor and Patterson Street intersection, Middle Park

We're improving the landscape and reducing stormwater pollutants at this intersection. Raingardens help clean stormwater by trapping litter and filtering pollutants before they enter our drains, and eventually the bay. By removing unnecessary asphalt surfaces and replacing them with landscaped space, the project also supports other Council objectives including greening and cooling the City. We will begin construction on similar intersection projects in the coming month at Beaconsfield and Nimmo Street, Middle Park and at Cecil and Napier Street, South Melbourne.

Look out for construction commencing for other upcoming infrastructure projects supported by the LRCI program over the coming months including a new outdoor seating area at South Melbourne Market and a new play space at St Kilda foreshore.

For access to more information on each project, visit: <https://www.portphillip.vic.gov.au/about-the-council/news-and-media/construction-begins-on-infrastructure-projects>

## Running for fun and mental health

Running can be a powerful tool in managing your mental health and improving your wellness. With mental health issues at the forefront of the COVID-19 pandemic, the 2XU Wellness Run is a great way to keep active and participate in a great cause.



The 2XU Wellness Run is on 5 December at St Kilda's Catani Gardens with every dollar raised supporting Beyond Blue's 24/7 Support Services.

Participants can choose between three different circuit runs: a 5km run or walk, a 10km run or a 21.1km half marathon.

"It's all about getting people involved and getting people back out there now after lockdown and raising money for those support services for Beyond Blue," Event Manager Kane Osler said.

The event has already raised over \$100,000 and is well on the way to achieving the goal of fundraising \$200,000.

For more information about the 2XU Wellness Run and to participate, visit their website - <https://wellnessrun.com.au/>

## Port Phillip Planning Scheme Amendment

In July 2021, Council endorsed changes to the Port Phillip Planning Scheme and resolved to prepare Amendment C203port. The proposed amendment will be open for public exhibition from 11 November to 17 December where we invite you to make a written submission.

The amendment proposes to update the Port Phillip Planning Scheme to implement the findings of the Port Phillip Planning Scheme Audit Report 2018 and land use and development directions of Council's adopted strategies and documents, as well as align with Victorian Government requirements for planning schemes.



### **Why is the amendment required?**

The Port Phillip Planning Scheme outlines how land can be used, developed and conserved in our community. This ensures our City develops responsibly and preserves our distinctive character. In 2018 Council adopted the Port Phillip Planning Scheme Audit Report and the Victorian Government prepared Amendment VC148 which introduced new requirements to planning schemes to simplify and improve their structure, function and operation and remove unnecessary regulation.

In response, the Municipal Strategic Statement, which outlines key land use and development objectives, and local planning policies were reviewed and translated into a new format to comply with these new requirements and implement the recommendations in the Port Phillip Planning Scheme Audit Report.

Most of this translation is 'policy neutral' and does not alter the meaning of the policy. Where it is not policy neutral, it gives effect to strategies and plans already adopted by Council.

This is not a wholesale review of all local planning policy objectives and controls, and this is not a review of any zoning or overlay controls that apply to properties.

### **Where can I find further information?**

To view the proposed amendment, register to attend a community information session and for details on making your written submission, please visit: <https://haveyoursay.portphillip.vic.gov.au/c203port>

Submissions close on 17 December 2021.

## **Getting around Victoria survey**

Monash University is conducting research into how we move around our local communities in Victoria. Click on the blue arrow on the link to take a 10-minute survey for a chance to win one of ten \$50 gift cards.

### **Getting Around Victoria Survey**



Read more: [https://monash.az1.qualtrics.com/jfe/form/SV\\_cHKGCAR56OYc5Vk](https://monash.az1.qualtrics.com/jfe/form/SV_cHKGCAR56OYc5Vk)

## **Arts in Focus**



## Carin's caring calendar

A 2022 calendar created by St Kilda artist and poet Carin Lavery is more than just a beautiful appointment reminder or thoughtful gift.

All profits from the \$30 calendar are going to St Kilda's Space2b social design program, Space2Fly, which supports newly arrived migrants, refugees and people seeking asylum to start their own enterprise to become financially independent.

The calendar will be launched online on Thursday 18 November at 6.30 pm. The virtual event also includes the auctioning of a large original painting by Carin, with all proceeds again going to Space2b.

Each of the 12 watercolour paintings in her latest labour of love were inspired by photographs sent by community members after Carin put out an invitation for nature-related images on the Residents in St Kilda Facebook group.

Local landmarks and beautiful backdrops include St Kilda Pier and the Botanical Gardens, with sunsets and seagulls also represented in some of the watercolours.

Read more: <https://www.portphillip.vic.gov.au/about-the-council/news-and-media/carin-s-caring-calendar>



## First Impressions

Victoria-based Aboriginal and Torres Strait Islander musicians are encouraged to apply for the First Impressions career development program, a new initiative from our Council.

Five successful applicants will receive career boosting guidance from local music industry mentors under the innovative new program.

Industry mentors will support participants to produce professional recordings of their work as well as an online promotional portfolio complete with professional photography and video.

Participants will also receive guidance on industry best practice related to processes such as achieving publicity and booking gigs. The First Impressions program will culminate with a live performance in a participating event at a Port Phillip venue.

Applications close mid-November and the program will run online and in person from January to May 2022.

Read more: <https://www.livenlocal.com.au/first-impressions>

*Yaluk-ut Weelam Ngargee Concert - Gareeal. Featuring Ensemble Dutala, Bumpy, Alice Skye, Monica Jasmine Karo and Allara. Photo: Tiffany Garvie, 2021*

# Help Shape our City



## Current and upcoming consultations

Throughout November and December we'll be asking for your feedback on a range of projects and initiatives across our City, including a play space upgrade, streetscape improvements and guidelines for nature strips. To find out more, visit the Have Your Say page.

Read more: <https://haveyoursay.portphillip.vic.gov.au/>



## Help shape Year 2 of our Council Plan

If you think you'd might like to be part of some deeper conversations in the new year about how we can continue to keep our City great, then we want to hear from you.

Register your interest before 23 December 2021 and we'll keep you in the loop about future opportunities to participate in deeper conversations about some of the challenges and opportunities we're considering as we continue planning for the future of this great City.

Read more: <https://haveyoursay.portphillip.vic.gov.au/help-shape-our-city>

## Community Spirit

### Inclusion on the menu at Radio Mexico

We enjoy showcasing local businesses which offer their services in inclusive ways. Before lockdown, we spoke to Michael who was eager to share why he loves visiting St Kilda restaurant Radio Mexico.

**Hello Michael, thank you for taking the time to share your experience of visiting a local inclusive business in St Kilda. Can you tell us about Radio Mexico?**



Radio Mexico is a Mexican eatery local to where I live. I enjoy spending Sunday afternoons there, sipping cocktails in the afternoon sun with frijoles y tortillas! They are on Carlisle Street, just near busy Acland Street, St Kilda. I visit the restaurant often, and though ambulant with limited mobility, the staff ensure I am seated comfortably to enjoy my dining experience.

Seating options are available outside for people who prefer to be outdoors right now with the COVID pandemic, and indoors there is a 'mesa comunal' or communal table that is ideal for people with wheelchairs to wheel up to. All the seating here offers plenty of leg room and floor space to socialise between tables. The front door is wide enough for wheelchair users to enter and the accessible toilet is located on the ground floor, with comfortable room to navigate your way there.

**Michael, these are some really great examples of how to arrange the physical space of a venue to include customers. Have you anything else to share?**



The venue has installed acoustic panels in the restaurant area to manage the sounds of customers and, if this is still an auditory overload, there is a separate sheltered courtyard available outdoors via a few steps, with gas heating available. Additionally the indoor fixed wooden seating along the restaurant walls has been upholstered and blankets are available for extra cushioning or for comfort and warmth.

**Thank you again Michael for sharing your experience.**

If you wish us to consider a story about a local inclusive business, please contact the Divercity Editor via ASSIST on 9209 6777 or email [divercity@portphillip.vic.gov.au](mailto:divercity@portphillip.vic.gov.au)

## Pop in for a good cause

For over 40 years, the Cancer in Kids @ RCH (CIKA) has been raising much needed funds to support children's cancer research. The volunteer organisation recently opened a pop-up shop on Carlisle Street, Balaclava, where residents can buy gifts and toys ahead of Christmas, all while supporting a great cause.



Volunteer Sala Rubinstein has been with CIKA for 11 years. She would normally be running a stall twice a month at the Royal Children's Hospital, but hasn't been able to do so since March 2020, when the pandemic took hold.

CIKA received a generous offer of a shop space to operate outside of the strict health confines of the RCH, thanks to one of their regular suppliers, Moose Toys.

"They have given us the Carlisle Street shop until Christmas, which is absolutely brilliant. We've got it for the next six weeks, hopefully we can raise some money," Ms Rubinstein said.

"There's a lot of variety of products from children's toys, tea towels and aprons, games to cosmetic products including body washes and soaps and baby products. There's lots of things for people to buy for gifts and Christmas presents," she said.

"All of the products are brand new and are under retail price. I try to keep the prices down so people can get a bargain at the same time."

CIKA is composed entirely of volunteers and has raised over \$4.5 million since its inception, with all funds raised going towards cancer research.

CIKA's fundraising has helped employ a solid tumour clinical trials coordinator and supports the Children's Cancer Centre Biobank, which holds hundreds of tumour specimens essential for research into childhood tumours.

Ms Rubinstein said CIKA also offers emotional support to children and families.

"I like the camaraderie, our volunteer work is more than just raising money. When we're usually in the hospital, we're speaking to the parents and the grandparents and it gives them other support. We're an ear for someone else to listen to you," she said.

"When you've got crying children around, we're there to try and put a smile on their faces and it's very satisfying to be able to share stories with them and give them something to look forward to."

The CIKA pop-up is at 289 Carlisle Street, Balaclava, until 24 December and is open from 10 am to 4.30 pm on weekdays. For more information about CIKA, including opportunities to volunteer or donate, visit their website - <http://cika.org.au/>

# What's On



## Bicycle User Group

Saturday 20 November  
11 am – 1.30 pm

Join Port Phillip Bicycle User Group (BUG) on a community bike ride to visit 10 Aboriginal Sites of Significance across the City of Port Phillip.

The ride is approximately 12 kilometres over two hours through the streets and bike paths of Balaclava, Elwood, South Melbourne, Albert Park and Port Melbourne.

Led by historian Meyer Eidelson, the ride will visit 10 interpretive signs that were installed in 2016 during Reconciliation Week.

Visit their [website](#) for more information and bookings.



## Acland Street Car and Bike Show

Sunday 21 November  
10 am – 6 pm

Acland Street will be transformed into a showcase of classic cars, hot rods, street machines and bikes in this popular annual event presented by Showcars Melbourne and Acland Street Village.

There's also live music, a Kids Zone and fantastic dining on offer.

All attendees aged over 16 must be fully vaccinated.

Road closures will be in place from 6 am to 6 pm along Acland Street, Blessington Street, Shakespeare Grove and Belford Street, St Kilda

Visit their [website](#) for more information.



## Lakeside Carols

Thursday 2 December  
5.30 pm – 8.30 pm

Connect with your community this Christmas at the Lakeside Carols Street Party at Albert Park Village on the corner of Birdport Street and Victoria Avenue.

The Lakeside Carols Street Party is the perfect opportunity for friends and family to reconnect with their community and enjoy local food, music, culture, and festivities.

And it wouldn't be a complete without a visit from Santa Claus!

All attendee donations will go to St Kilda Mums, a charity that rehomes pre-loved nursery goods to support Victorian families in need.

This event is a Council Love My Place grant recipient.

For more information, visit their [Facebook](#) page.

Explore our City

# Your Councillors

## Gateway Ward



**Cr Heather Cunsolo**  
0466 227 014



**Cr Peter Martin**  
0435 390 821



**Cr Marcus Pearl**  
0466 448 272

## Lake Ward



**Cr Andrew Bond**  
0481 034 028



**Cr Katherine Copsy**  
0466 478 949



**Cr Christina Sirakoff**  
0435 419 930

## Canal Ward



**Cr Tim Baxter**  
0466 495 250



**Cr Rhonda Clark**  
0435 098 738



**Cr Louise Crawford**  
0466 514 643

You are receiving this email because you subscribed to Divercity magazine mailing list.  
Want to change your details? [Update your details.](#)

[Contact us](#) | [Privacy Statement](#) | [Accessibility](#)



This email was sent by City of Port Phillip, 99a Carlisle Street, St Kilda, VIC 3182, Australia to  
divercity@portphillip.vic.gov.au

[Unsubscribe](#)