

**Vanden<sup>®</sup>**

**[www.vandenrecycling.com](http://www.vandenrecycling.com)**

- Vanden Global was founded in 2005 in Hong Kong by Damien van Leuven
- Vanden Global is owned by Damien van Leuven & John Carapetis
- Vanden Recycling (UK) was formed as a subsidiary in 2012 in partnership with David Wilson
- Vanden Global has subsidiaries & representatives in Australia, Finland, Turkey & UAE



# Vanden Stats & USP's

- Approx 30,000MT traded & processed from UK annually. Over 50,000MT globally.
- Our Materials sold to 100+ end users in 20 countries (full traceability)
- Handle 100+ grades of scrap plastics from Production, Industrial, Commercial & Consumer Waste
- Boots on the ground
  - Vanden trained staff in Australia, Finland, Hong Kong, Ireland, Turkey, UAE & UK
- We Care Who We Work With
  - We are not a “take everything” buyer or a “sell to anyone” supplier.
  - Deal with materials that have sustainable end markets & only sell to licensed customers, verified by our people



**> Rethink**

**> Recycle**

**> Resupply**

- > We have always existed to make an impact on plastics recycling**
- > We view plastic as a high-value commodity that plays an integral role in the supply chain**
- > We challenge perceptions of plastics and aim to inspire future supply**

*“What has got us here, won’t get us there, if it could get us there we would already be there and we are not... so it won’t.”*

Keith J Cunningham

# “Recycling” Symbols, it can be Recycled?



PET



HDPE



PVC



LDPE



PP



PS



OTHER

**Vanden**<sup>®</sup>

# A MRF is a Recycling Facility No, it's a Processing & Baling Facility



# Soft Plastics are not very Recyclable?

Soft Plastics are very recyclable, but it depends on the Polymer, Application and the Functional Performance

There could be over 10 different variations of “Soft Plastics”

LDPE Film, LLDPE Film, HDPE Film, PP Film, PET Film, Metallised PP Film, PE/PA Film, LDPE Film with EVOH, PVC, PE/PP Film, PE/PET Film, PA Film, each of these have different properties and require a different recycling process.





# **Think Beginning Not End.**

**A Product is only Recyclable if it made to be Recycled and is  
Commercially Viable to Recycle it.**

# 2025 Packaging Targets

**100%** reusable, recyclable or compostable packaging

**70%** of plastic packaging being recycled or composted

**30%** average recycled content in all packaging

**The** phase out of problematic and unnecessary single-use plastics packaging



**RECYCLABLE**  
This can be placed in your kerbside recycling as it is.



**CONDITIONALLY RECYCLABLE**  
Can be recycled if the instructions below the symbol are followed.



**NOT RECYCLABLE**  
This cannot be placed in kerbside recycling. Please dispose in your rubbish bin.



**PACKAGE COMPONENT**  
This refers to an individual component of the packaging.

# The Future is the Opportunity

The largest demand for Recycled Plastic is going to come from Brands and Consumers Goods Packaging, so we must adapt to meet the demand.



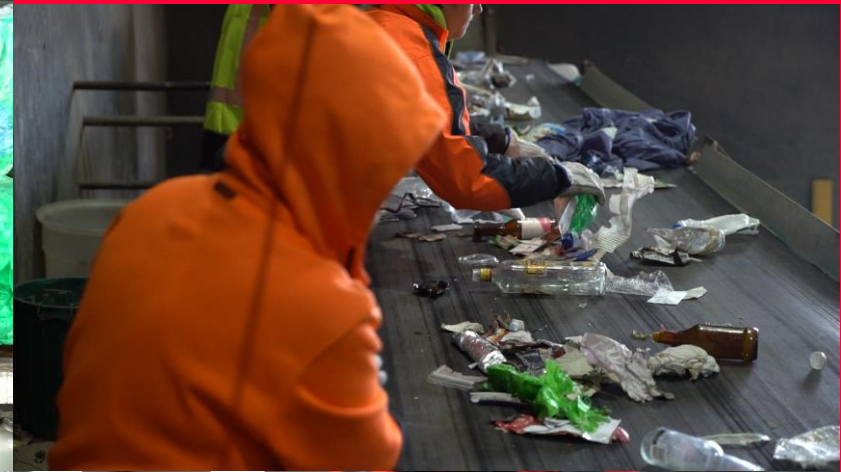
**Vanden®**

# So what are the TOP 3 Questions

How do I know if it's  
Recyclable?

Where does it go?

What does it get made  
into?



**Vanden**<sup>®</sup>

# Education

We must bring people on the Journey with us.

We must be willing to show why it is Recyclable, How to Handle it and What it gets made into

Transparency on where our materials go & what products do they really get made into, builds TRUST.



**Vanden**<sup>®</sup>