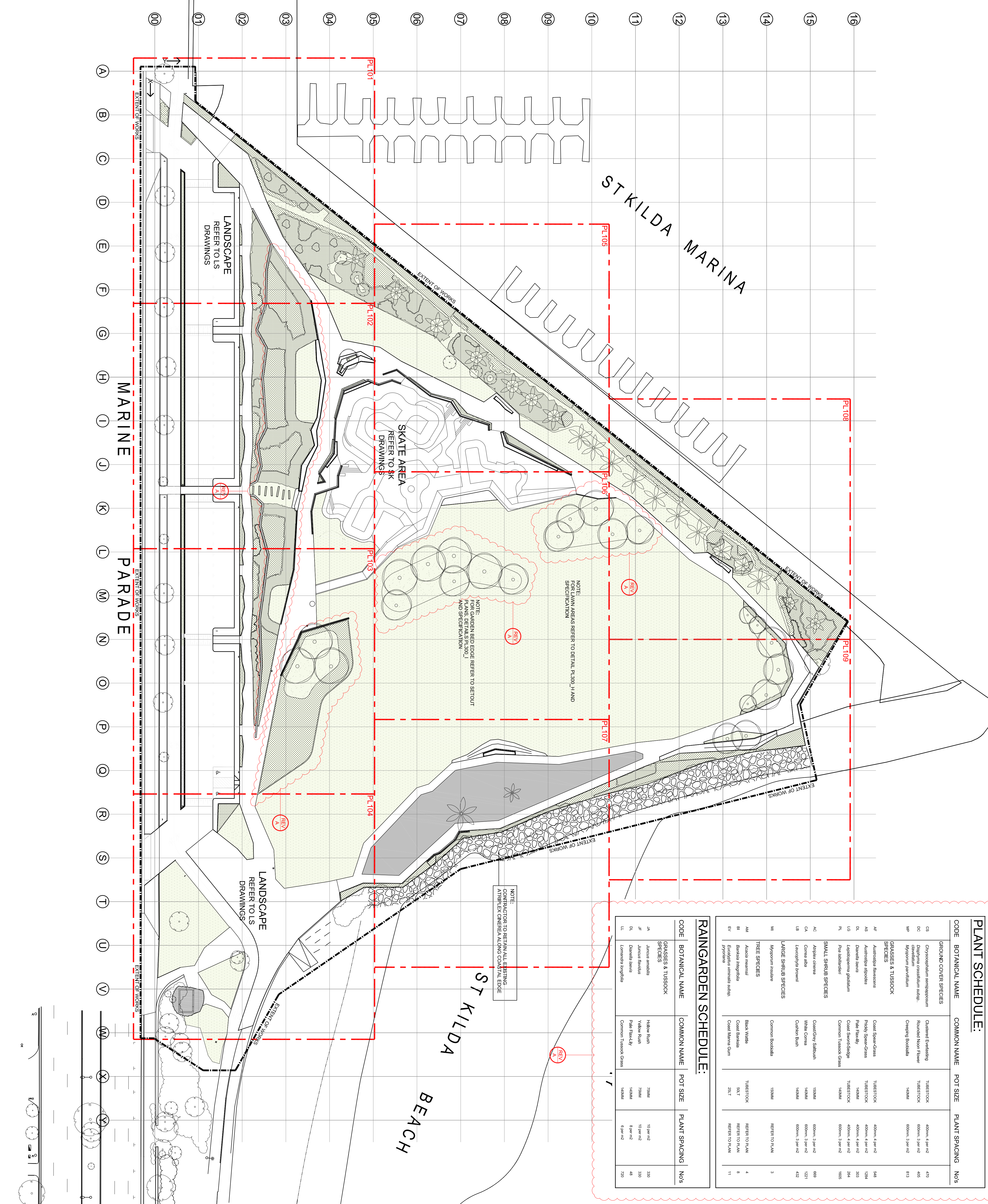


**PLANT SCHEDULE:**

CODE	BOTANICAL NAME	COMMON NAME	POT SIZE	PLANT SPACING	Nos
CS	<i>Corynephorus amargosus</i>	Clashed Eucalypt	TUBESTOCK	600mm, 3 per m <sup>2</sup>	470
CC	<i>Podocarpus costularium</i> ssp. <i>sp.</i>	Rounded Hoop Flower	TUBESTOCK	600mm, 3 per m <sup>2</sup>	450
MP	<i>Myoporum laetifolium</i>	Cheeping Bookbulla	140MM	600mm, 3 per m <sup>2</sup>	813
<b>GRASSES &amp; TUSsock SPECIES</b>					
AS	<i>Austrochloa spirostachya</i>	Coast Spear-Grass	TUBESTOCK	400mm, 4 per m <sup>2</sup>	948
AS	<i>Austrochloa stipoides</i>	Pilly Sand-grass	140MM	400mm, 4 per m <sup>2</sup>	1294
LO	<i>Drosera spirostachya</i>	Pink Flycatcher	TUBESTOCK	400mm, 4 per m <sup>2</sup>	303
LO	<i>Lycopodium gleditiae</i>	Coast Sword-Grass	TUBESTOCK	400mm, 4 per m <sup>2</sup>	264
PL	<i>Poa subulnaria</i>	Common Tussock Grass	140MM	600mm, 3 per m <sup>2</sup>	1605
<b>SMALL SHRUB SPECIES</b>					
AC	<i>Acrocalymma cinereum</i>	Coast Grey Saltbush	150MM	600mm, 3 per m <sup>2</sup>	669
CA	<i>Cornus alba</i>	White Cornus	140MM	600mm, 3 per m <sup>2</sup>	1221
LB	<i>Leucophaea brownii</i>	Casilian Bush	140MM	600mm, 3 per m <sup>2</sup>	422
<b>LARGE SHRUB SPECIES</b>					
MI	<i>Myoporum laetifolium</i>	Common Bookbulla	150MM	REFFERS TO PLAN	3
<b>TREE SPECIES</b>					
AM	<i>Acacia menziesii</i>	Black Wattle	TUBESTOCK	REFFERS TO PLAN	4
BI	<i>Banksia integrifolia</i>	Coast Banksia	SALT	REFFERS TO PLAN	8
EV	<i>Eucalyptus viminalis</i> ssp. <i>sp.</i>	Coast Manna Gum	SALT	REFFERS TO PLAN	11

**RAINGARDEN SCHEDULE:**

CODE	BOTANICAL NAME	COMMON NAME	POT SIZE	PLANT SPACING	Nos
JA	<i>Juncus acutis</i>	Yellow Rush	75MM	10 per m <sup>2</sup>	320
JR	<i>Juncus tenuis</i>	Yellow Rush	75MM	10 per m <sup>2</sup>	320
DL	<i>Dunalia maritima</i>	Pink Flax-Lily	140MM	6 per m <sup>2</sup>	48
LL	<i>Lomandra longifolia</i>	Common Tussock Grass	140MM	6 per m <sup>2</sup>	720



NOTE: CONTRACTOR TO RETAIN ALL EXISTING ATRIPELEX CINEREA ALONG COASTAL EDGE

NOTE: PLANT AREAS REFER TO DETAIL PL100\_H AND FOR SPECIFICATION

NOTE: FOR GARDEN BED EDGE REFER TO SETOUT PLANS DETAILS PL100\_I AND SPECIFICATION

**WARNING**  
BEWARE OF UNDERGROUND SERVICES. THE LOCATION OF UNDERGROUND SERVICES IS INDICATIVE ONLY. THEIR EXACT POSITION SHOULD BE PROVIDED ON SITE.

This drawing and design is subject to copyright and may not be reproduced without prior written consent. Contractor to verify all dimensions on site before commencing work. Report all discrepancies to Superintendent prior to construction. Figured dimensions to be taken in preference to scaled drawings. © Comic Design 2011

Client  
City of Port Phillip  
Cm Brighton Road and Carlisle Street  
St Kilda  
VIC 3182

Drawing Key

**DRAWING KEY 1:20000**

**LEGEND:**

- PROPOSED NEW PLANTING. DETAILS AND SPECIFICATION FOR SPECIES AND QUANTITIES.
- PROPOSED NEW PLANTING. GEORGCROVERS. DETAILS AND SPECIFICATION FOR SPECIES AND QUANTITIES.
- PROPOSED NEW PLANTING. GRASSES AND TUSsock SPECIES. DETAILS AND SPECIFICATION FOR SPECIES AND QUANTITIES.
- PROPOSED NEW PLANTING. SMALL SHRUB SPECIES. DETAILS AND SPECIFICATION FOR SPECIES AND QUANTITIES.
- PROPOSED NEW PLANTING. LARGE SHRUB SPECIES. DETAILS AND SPECIFICATION FOR SPECIES AND QUANTITIES.
- PROPOSED NEW PLANTING. TREES. DETAILS AND SPECIFICATION FOR SPECIES AND QUANTITIES.
- EXISTING TREES TO BE PROTECTED AND RETAINED THROUGHOUT CONSTRUCTION. REFER TO SPECIFICATION.
- SETOUT POINTS FOR GARDEN BED EDGING. REFER TO DETAILS AND SPECIFICATION.
- SETOUT POINTS FOR GARDEN BED EDGING. REFER TO DETAILS AND SPECIFICATION.
- PROPOSED NEW PLANTING. RAINGARDENS. REFER TO DETAILS PL100\_A & PL100\_I AND SPECIFICATION.
- PROPOSED NEW PLANTING. LAWN AREAS. REFER TO DETAILS PL\_200\_H AND SPECIFICATION.
- PROPOSED NEW PLANTING. GARDEN BED MULCH AREA. REFER TO DETAILS PL100\_J AND SPECIFICATION.

**FOR CONSTRUCTION**

Status  
Revision

A	Revised Planting Layout	28.11.12
-	Issued For Construction	12.06.12

Scalepak Design & Landscape Architecture  
Unit 13, 48/52, Regent Street (between Stables and Melbourne - 3121)  
Phone: 03 9486 0800, 1300 560 006, www.scalepak.com.au

**COMING DESIGN**

Consulting Engineers  
KERSILL TING  
LEVEL 1, 1743 MALVERN ROAD  
GLEN IRIS VIC 3146 AUSTRALIA  
T: 03 9885 4255, F: 03 9885 0478  
www.kersillting.com.au

Lighting & Electrical Design  
WEBB AUSTRALIA GROUP  
80 FERMEYER ST (PO BOX 1005)  
TOOWONG QLD 4068  
T: +617 3970 4900 F: +617 3970 4100  
www.webbdesign.com.au

Project  
**MARINA RESERVE UPGRADE**  
Marine Parade  
St Kilda VIC

Drawing Title  
**PLANTING SITE PLAN**

Drawn: Checked: Scale A1 Scale A3 Date  
IB (CONVIC) RB (CONVIC) 1:400 17.11.11

Job Number: Client Reference  
N/A

Drawing Number  
13132

Revision  
**PL100**