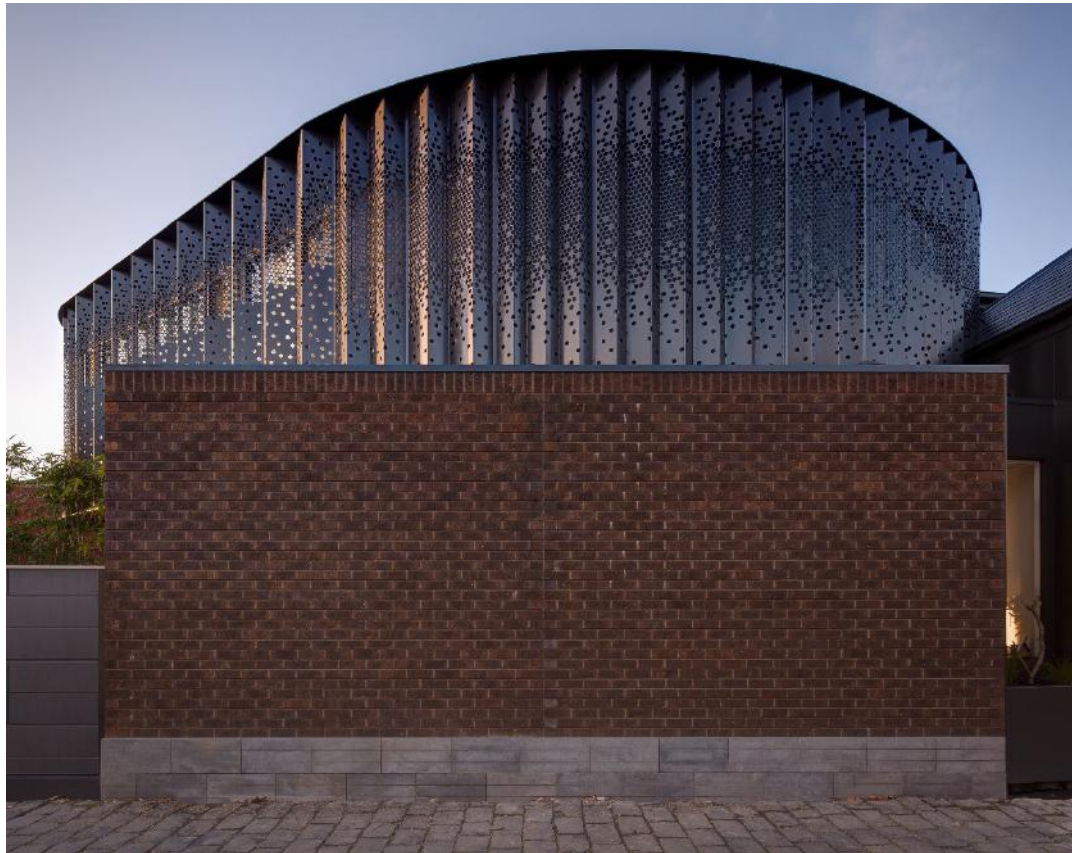


Albert Park Curved Pleated Facade



Application No.	0002647
Date Submitted	24/10/2019 9:51:52 AM
Project Category	1. Residential dwelling: alteration or new build;7. Sustainability;8. Heritage
Project name	Albert Park Curved Pleated Facade
Org name	AdeB Architects
Contact person	Alfred de Bruyne
Contact Telephone	0412 352 700
Contact Email	deb@adeb.com.au
Date of Completion	Aug/2017
Project Street Address	107 Richardson Street
Project Suburb	Albert Park
Project Post Code	3206
Client name	Matthew and Lisa Belford
Project Cost	2500000
Site Area (m2)	349
Org Street Address	16 The Domain, 1 Albert Road
Org Suburb	Melbourne
Org Post Code	3004
Org Website	www.adeb.com.au



Organization overview

AdeB Architects is design driven, committed to a creative culture and design quality in all its endeavours. Considered, comprehensive approach to design and service is paramount where problem solving skills strive for creative, clever, value added solutions. Substance over style reigns, where experience and first principles always has relevance.

Brief description

Albert Park curved pleated facade is a sensitive addition to a single storey polychrome Edwardian villa. The Heritage overlay ensured the retainment of this fine existing residence. Additions comprise a distinct two level extension and a separate complementary garage studio with a sun filled courtyard.

Response to key selection criteria

Context The Heritage overlay ensured the retainment of the fine existing residence. This sensitive addition to an intact single storey polychrome Edwardian villa is for a young family with three children. The additions were configured as a two level extension and a separate complementary garage studio separated by a sun filled courtyard. The soft forms are a quiet recessive presence in the rear lane, backyard context. The two offset pebble shaped forms resolves the conflicting site alignments and satisfied strict planning requirements. The receding bulge of the extension presents as a clear demarcation between new and retained building. New elements and materials complement the brick, slate and bluestone of the existing. **Public Realm** The decision to go beyond the usual 'black box addition' solution results in the soft ovoid form of the upper levels. The rounded shapes expressed with a simple uniform facade treatment present as a recessive and subservient presence within the rear lane, backyard context. This sensitive addition has great visibility from the laneway. The silhouette of curved forms and the elegant facade is this home's memorable persona. The curved forms resolve conflicting site alignments and satisfied strict planning requirements, and the recessive and subservient presence in the rear lane, backyard context sits comfortably in the predominantly single-level neighbourhood. Strict planning conditions protecting neighbours amenity demanded the new forms were carefully considered and validated. Privacy screening of the neighbouring gardens were seamlessly integrated into the pleated facade. Hexagonal laser cut perforations were sized for compliance but importantly transparency purposes to offer views to the courtyard, studio and tall buildings in the mid-distance. The distribution of the perforations carefully considered with patterns that ranges from solid to high-transparency. **Sustainability** The arrangement and massing of the additions ensure optimum solar access to the courtyard without compromising the neighbours amenity. The north facing facades are protected by overhangs and the facade screens. Optimum insulation strategies applied with bulk insulation and sarking to the walls and roof. Double-glazing throughout for the windows and skylights with either timber to the historic residence or thermally improved aluminium frames to the new. Natural light introduced to internal spaces with generous skylights. Concrete floor slab edged insulated with overlay of insulation for hydronic coils. Heating and cooling is a combination of in slab and radiators and an efficient reverse cycle split system. Good cross ventilation strategies

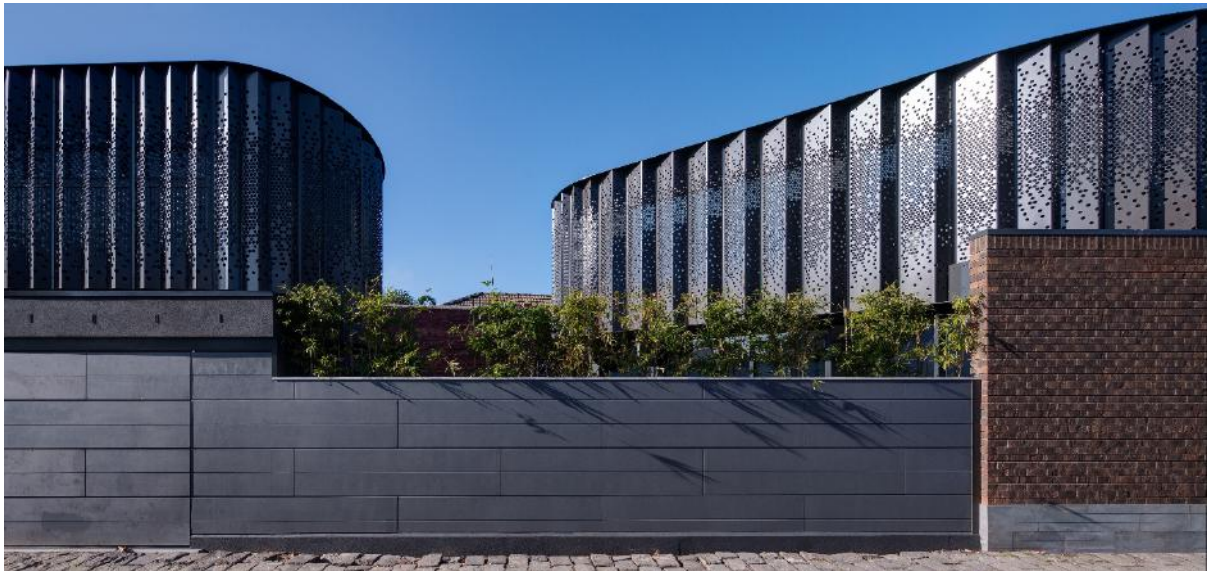


quietly integrated. Full height, fully recessed sliding doors provide effective compartmentalisation to the various areas of the home. Water harvesting with a 2,000 litre in-ground tank. Heritage The Heritage overlay ensured the retainment and restoration of this existing residence, with the rejuvenation of the brick facade and the full replacement of the slate roof to create an attic storage and a fully concealed plant platform. Flooring and internal walls replaced as well as windows and doors. A reductive approach of keeping the compositions simple by concealing the presence and expression of the windows is achieved with full-height pleated, perforated metal screens contained within crisp head and sill plates. The profiled aluminium screens are finished in a metallic bronze powdercoat and extends across the entire length of the facades complementing the materials of the existing building. Process Functional casual spaces with low maintenance, practical finishes combines with impressive aspects of top lit double height spaces, rich materials and finishes and quality integrated services. The key design elements of curved forms and clean lines were understood and integrated in the responses from all the consultants. The planners and heritage consultant recognised the appropriateness of the soft ovoid forms set within the planning context. The interior designers celebrated and accentuated the curved forms of the building with internal elements and detailing, restrained sophisticated palette of materials and finishes. Design Excellence The significant narrowing of the small 349 m² long site and the desire to create a family home of 390 m² with a courtyard of a reasonable size was the design challenge. The site orientation, flanking lane and the desire to have a north facing primary facade to the living space and master suite was the genesis of our design concept. The most successful aspect of this design is the creation of a contemporary home expressed as a refined, restrained presence within the sensitive low scale heritage precinct. The sympathetic soft form composition, and the elegant surface treatment of the facades are the memorable qualities of this home. The diagonal alignment maximises the visual length of the glazed facade and engagement with the sunny courtyard. The overhang of the upper level master suite provides shading to the extensive window wall of the main living area. The upper level fenestration shaded with the full height screens. The separate complementary garage studio across the courtyard reflects the composition and elements of the main house with a capsule shaped window to the garage. The strategy of concealing the presence of the windows for compositional simplicity is achieved with full-height pleated, perforated metal screens. The pleated surfaces respond to changing light conditions and the sun's movement. The most alluring aspect of this home is the subtle impact of light on the soft silhouette of the curved forms. Form, massing, composition and an elegant surface treatment were key design considerations. To counter the restrained massing, the pleated facade is visually and texturally rich. The changing profile sizes enhance the curved characteristics and with shadow effect dramatizes the reading of form. The laser cut hexagonal perforations were carefully sized and distributed to provide the visual screening required by planning controls, visual transparency to take in views of the courtyard, studio and tall buildings in the distance and provide passive sun shading. Sun movement also animates this refined facade. Careful detailing of pivot hinged panels across windows, operable for window cleaning presents a seamless reading. Internally a delightful dapple light experience abounds across the facades. A large oculus above the double-height dining and stair tracks the sun's movement.



Additional Information

The additions have been configured to ensure it's a polite new presence in the neighbourhood. A simple modest home on the outside, and impressively glamorous and special within. This commitment to undertake a renovation validates the desirability of the location and when done well, revitalises the heritage quality of the precinct. This home achieves all the design, functional, accommodation and aspirational goals and delivers all the spatial requirements, relationship expectations with the delight, generosity and activity a young family expects from a well considered and designed home.





DESIGN
& DEVELOPMENT
AWARDS
2020

Residential dwelling: alteration or new build

