



Marina Reserve

# Marina Reserve Masterplan

## Fact sheet July 2012

The City of Port Phillip has finalised the Marina Reserve Masterplan and construction will commence in July 2012. The masterplan will provide for a range of recreational activities and age groups. It will be a multi-purpose space to cater for all members of our community - including walkers, joggers, cyclists and skaters.

For more information:  
visit [www.portphillip.vic.gov.au/marina-reserve.htm](http://www.portphillip.vic.gov.au/marina-reserve.htm)  
or call ASSIST on 9209 6777

### What has been the process to develop the Marina Reserve Masterplan?

The City of Port Phillip consulted with the community including local residents, police, people who use the foreshore for a variety of activities, skaters, state government and other interested parties to explore opportunities and establish the key components of the masterplan.

The first stage of the consultation process commenced in February 2010. Community input into this first stage was gained from an online discussion forum, a survey, community workshops, discussions with police, authorities, students from local primary schools and more. The second round of consultation included formal submissions. Council adopted the final masterplan in October 2010.

Council then sought coastal consent under the *Coastal Management Act 1995* (CMA) from the Department of Sustainability and Environment (DSE). The DSE provided CMA consent on 8 March 2011. This consent approved the Marina Reserve Masterplan with a number of conditions. Council requested a review of these conditions and the Minister for Environment and Climate Change approved an amendment to the coastal consent on 17 June 2011. The final consent from the Minister approves the October 2010 Masterplan with some additional features including more seating and a playground.

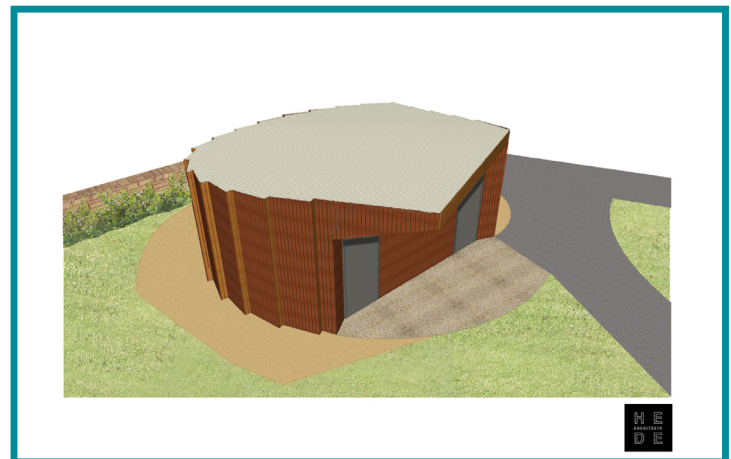
### What has been approved in the coastal consent?

Coastal consent has been given for the Marina Reserve Masterplan works, pursuant to Section 40 of the *Coastal Management Act 1995*. This consent is based on the inclusion of the following:

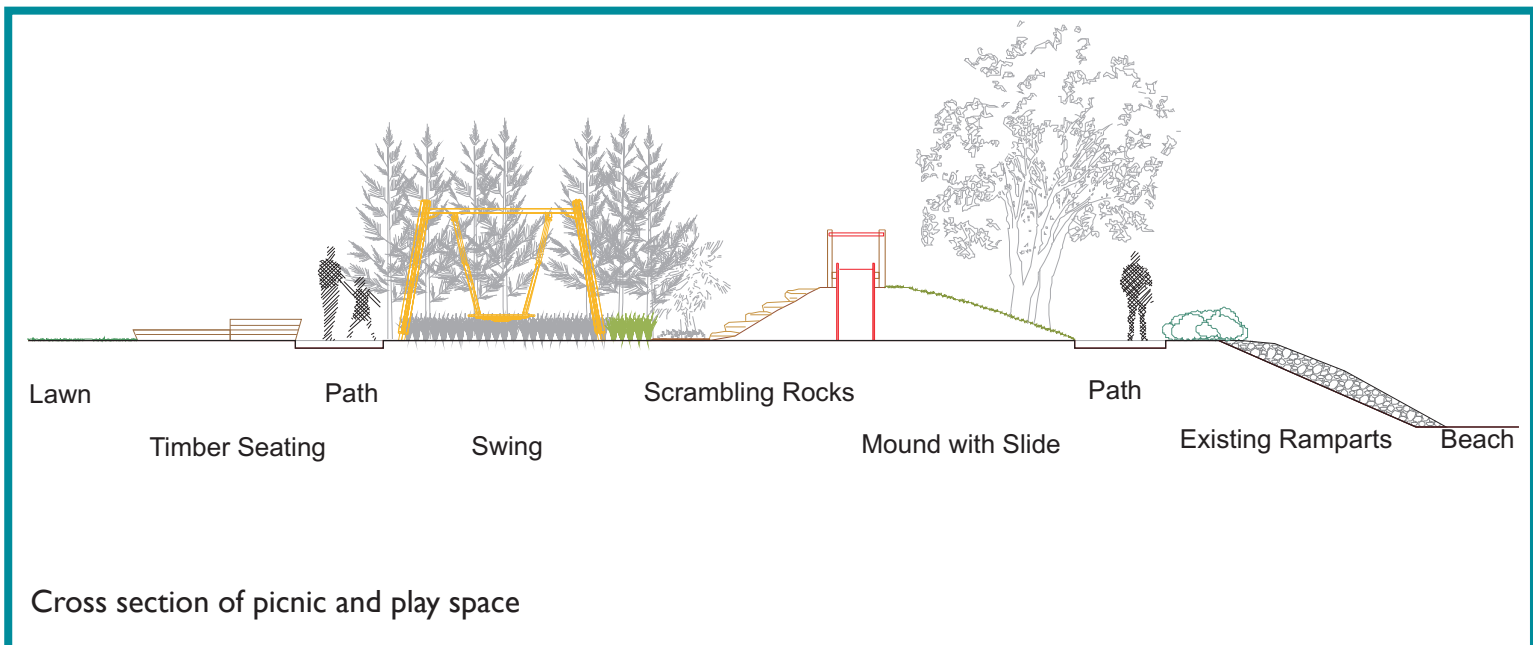
- the skateable area of 750 m<sup>2</sup> including the semi-enclosed pocket with an area of 70 m<sup>2</sup> and a depth of 2.1 m
- improvements to the BBQ area including two tables with seating and additional landscaping to provide shade
- inclusion of play equipment in the vicinity of the BBQ area
- provision of an additional 300 m<sup>2</sup> garden bed to separate the active and passive recreational areas.

The active recreation zone must not be used for skating competitions. There must not be temporary skating infrastructure or seating placed on site to allow for skating events or skating competitions.

To view the complete coastal consent please visit [www.portphillip.vic.gov.au/history-marina-reserve.htm](http://www.portphillip.vic.gov.au/history-marina-reserve.htm)



Public toilet



Cross section of picnic and play space



Artist's 3D impression of skateable space

### Detailed designs

The Marina Reserve works will see a complete upgrade of the reserve including an active recreation and skateable space, public toilets, beachside BBQ, picnic and play area, accessible walking paths, new bike lane, improved environmental features, quiet spaces to watch the water and skyline views, additional coastal vegetation and seating and reduced car parking. The Department of Sustainability and Environment approved the final detailed design plans prior to Council advertising for the construction tender in November 2011. To view the designs please visit [www.portphillip.vic.gov.au/marina-reserve.htm](http://www.portphillip.vic.gov.au/marina-reserve.htm)

### Tender and construction

Council undertook a competitive tender process for the construction of the Marina Reserve works and awarded the tender to Fulton Hogan at a public Council meeting on 8 May 2012. Prior to Council awarding the tender, several changes to the design were made to reduce overall costs. These included a reduction in concrete seating plinths and fixed litter bins as well as changing the concrete circuit path to a granitic surface. To view the Council Report please visit [www.portphillip.vic.gov.au/marina-reserve.htm](http://www.portphillip.vic.gov.au/marina-reserve.htm) Works will commence in July 2012 with a construction period of nine months. For construction updates please visit [www.portphillip.vic.gov.au/marina-reserve.htm](http://www.portphillip.vic.gov.au/marina-reserve.htm)

### Planning permit

As consent is provided under the *Coastal Management Act 1995*, the only component of the masterplan that requires a planning permit is the planting of vegetation under the DDO (Design and Development Overlay, Schedule 10).

### Operations plan

Council developed an operations plan to guide the future management and maintenance of the reserve to ensure that the space is protected and accessible to all. The operations plan was drafted with input from local residents at a series of community meetings in 2011. The plan covers all matters associated with the day-to-day operations, management and use of the reserve, including the car park, gates, public toilets, skateable space and BBQ.

Supported by the Victorian Government's  
Department of Planning and Community Development  
(Community Facilities Funding Program and Community Support Grant)





site plan 1:200 @ A3

**marina reserve**  
design development / site plan



# Marina Reserve Masterplan

To view a larger version of the plan and other images please visit [www.portphillip.vic.gov.au/marina-reserve.htm](http://www.portphillip.vic.gov.au/marina-reserve.htm)

