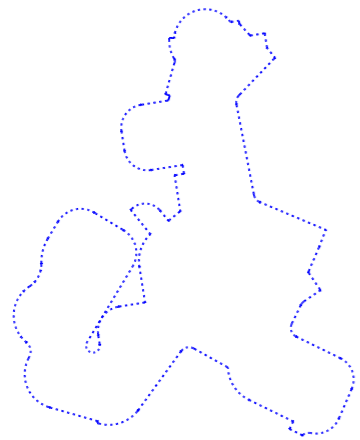


location plan 1:1000 @ A0



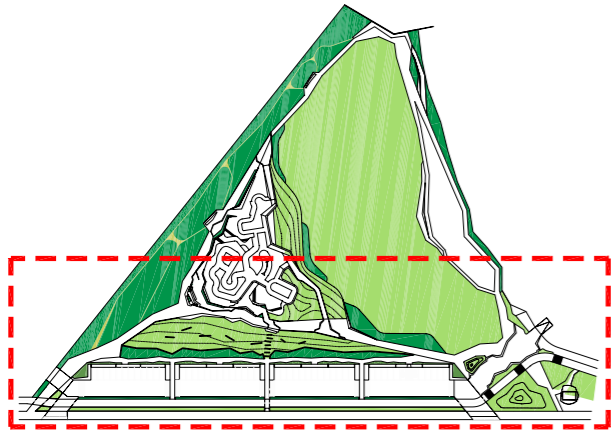
skateable infrastructure - 750 sq. metres 1:250 @ A0

proposed surface level + 2.700

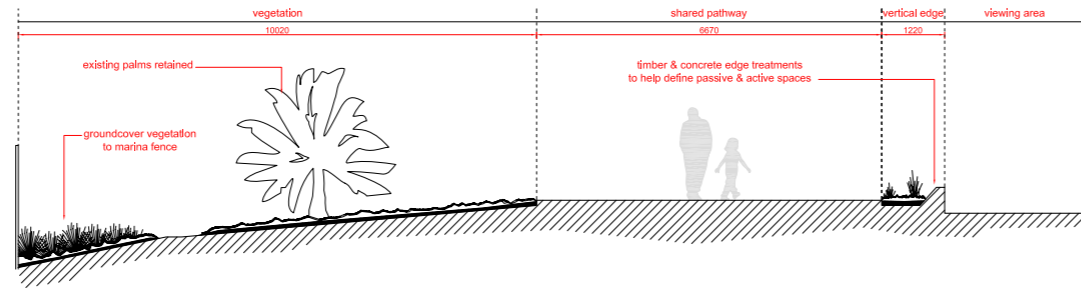


skateable infrastructure not to scale

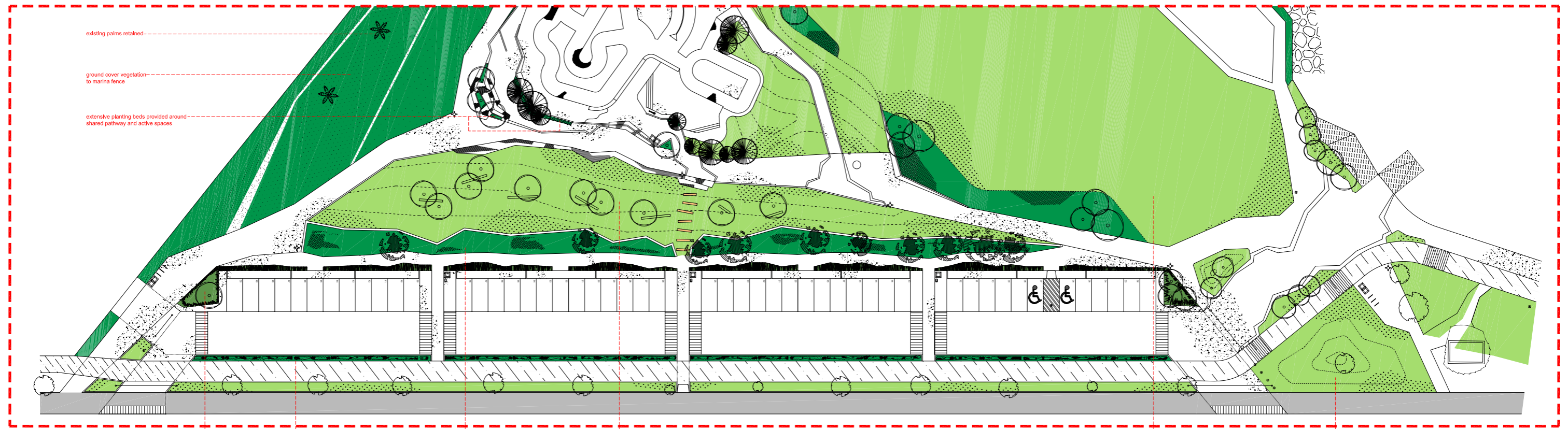




location plan 1:1000 @ A0



typical marina edge section 1:50 @ A0



vegetaion plan 1:200 @ A0

carpark raingarden to treat surface runoff

planted buffer between bike path & carpark

trees, shrubs & groundcover create buffer between carpark and reserve

banked lawn

open lawn area retained

new open lawn

surface water run off from pathways to be channelled to planting beds along paths edge to passively harvest stormwater

multiple planting beds provided along pathway edge

surface run off from carpark and surrounding hard surfaces to be channelled into raingarden

Raingardens will treat the water washed from the carpark and nearby pathways before it flows into existing stormwater drains. These gardens filter out the litter, oil and other pollutants which would otherwise end up in Port Phillip Bay.

2. litter, oil and other pollutants filtered through raingarden system

3. cleaner water re-enters existing drainage systems

1. water from carpark directed into raingarden through gaps in kerb

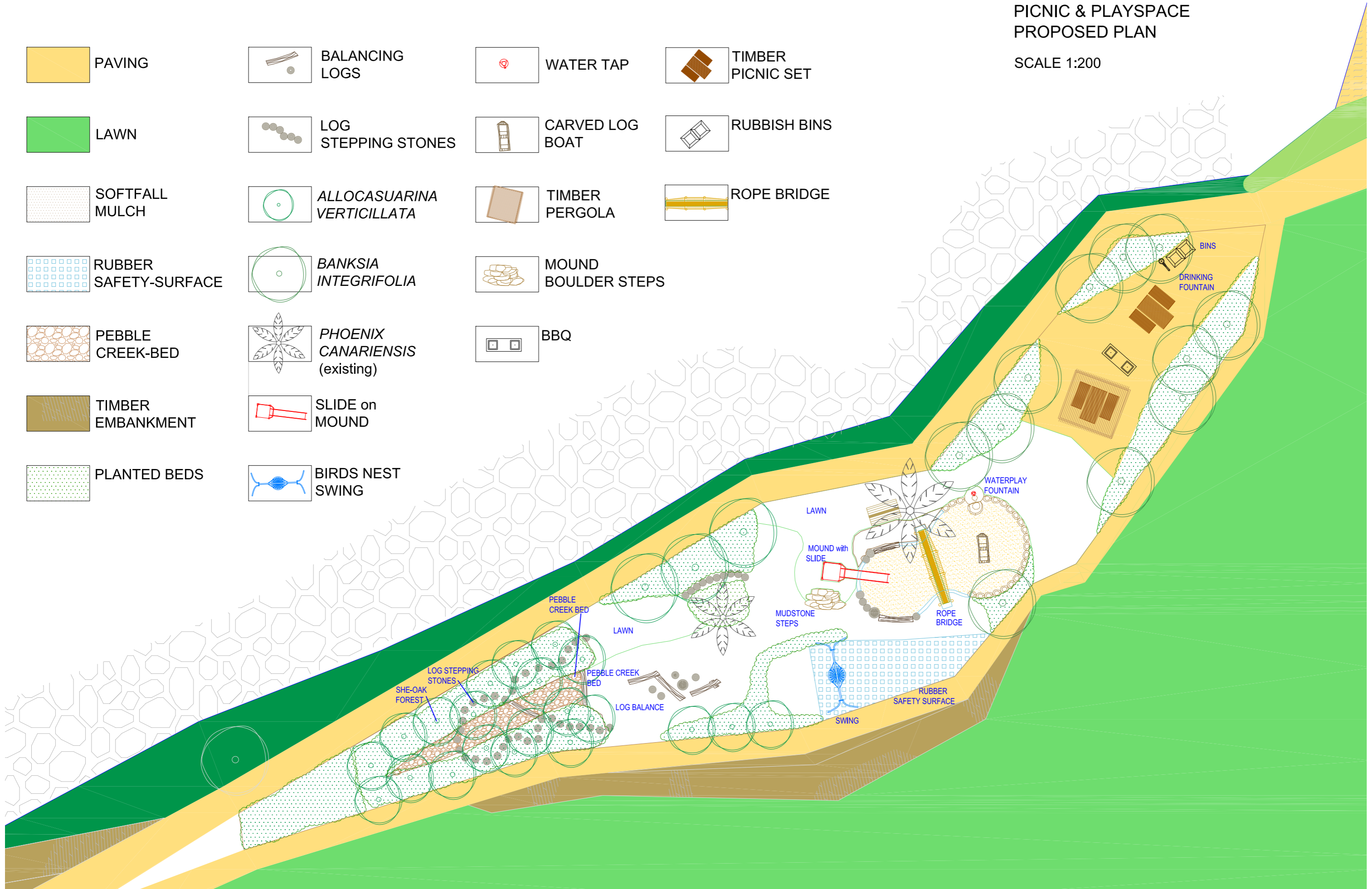


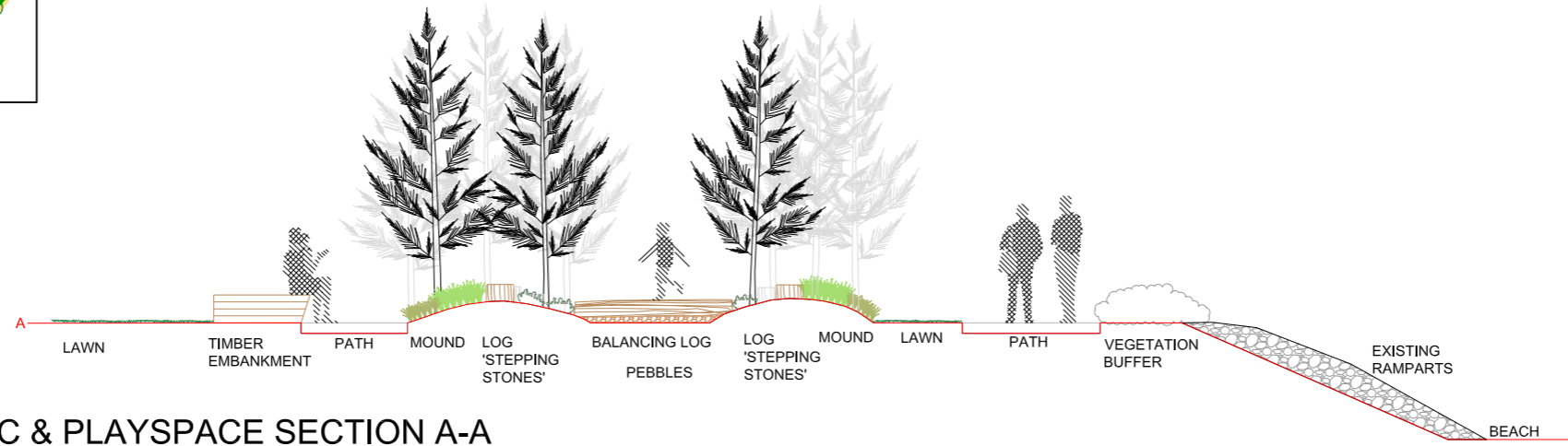
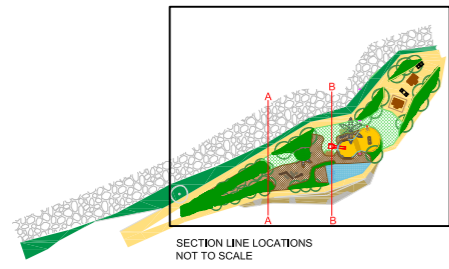
view 01

MARINA RESERVE MASTERPLAN PICNIC & PLAYSACE PROPOSED PLAN

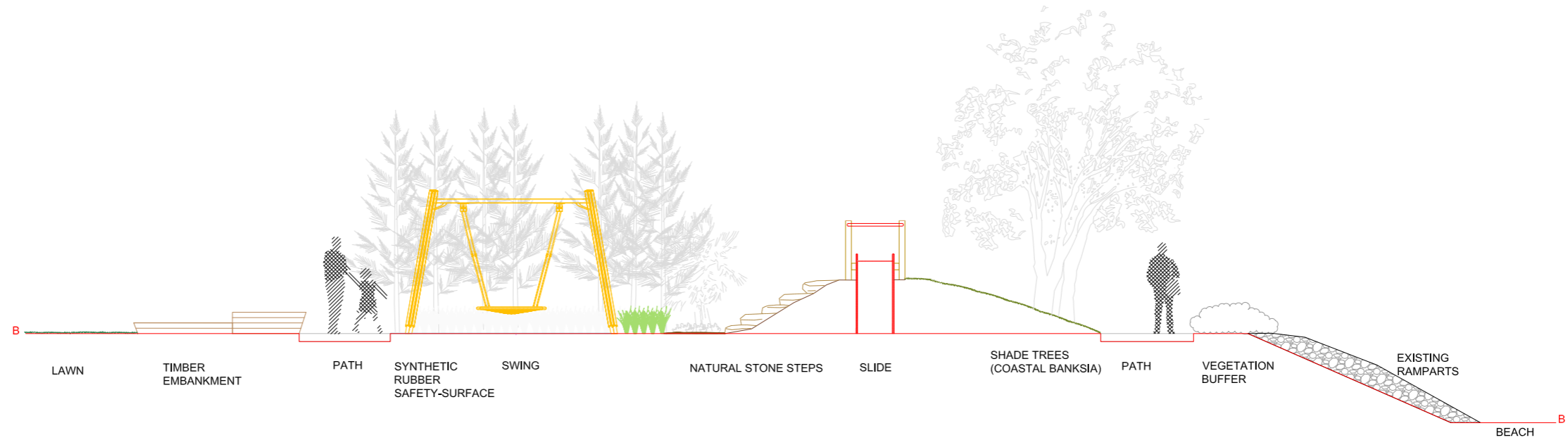
SCALE 1:200

- PAVING
- LAWN
- SOFTFALL MULCH
- RUBBER SAFETY-SURFACE
- PEBBLE CREEK-BED
- TIMBER EMBANKMENT
- PLANTED BEDS
- BALANCING LOGS
- LOG STEPPING STONES
- ALLOCASUARINA VERTICILLATA
- BANKSIA INTEGRIFOLIA
- PHOENIX CANARIENSIS (existing)
- SLIDE on MOUND
- BIRDS NEST SWING
- WATER TAP
- CARVED LOG BOAT
- TIMBER PERGOLA
- MOUND BOULDER STEPS
- BBQ
- TIMBER PICNIC SET
- RUBBISH BINS
- ROPE BRIDGE

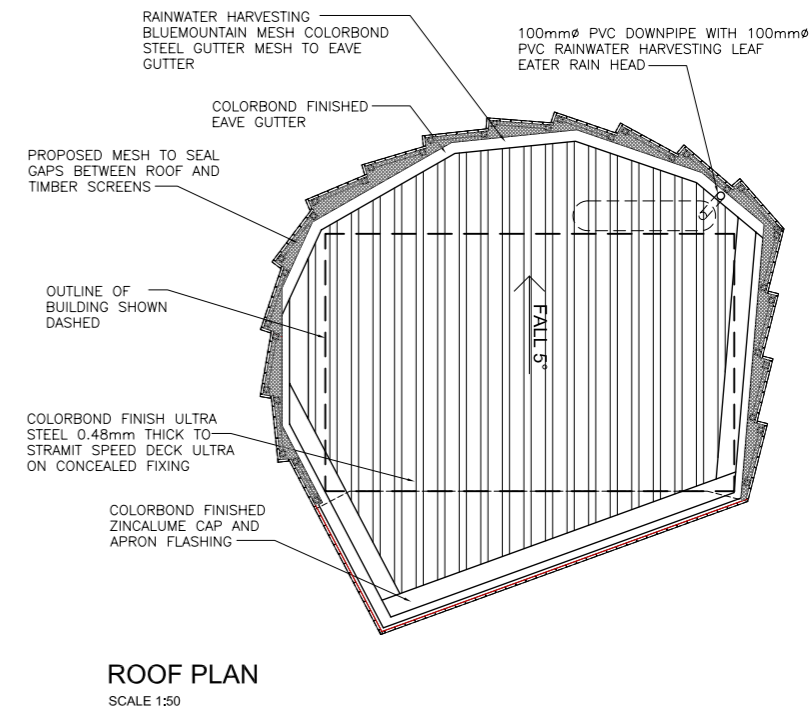
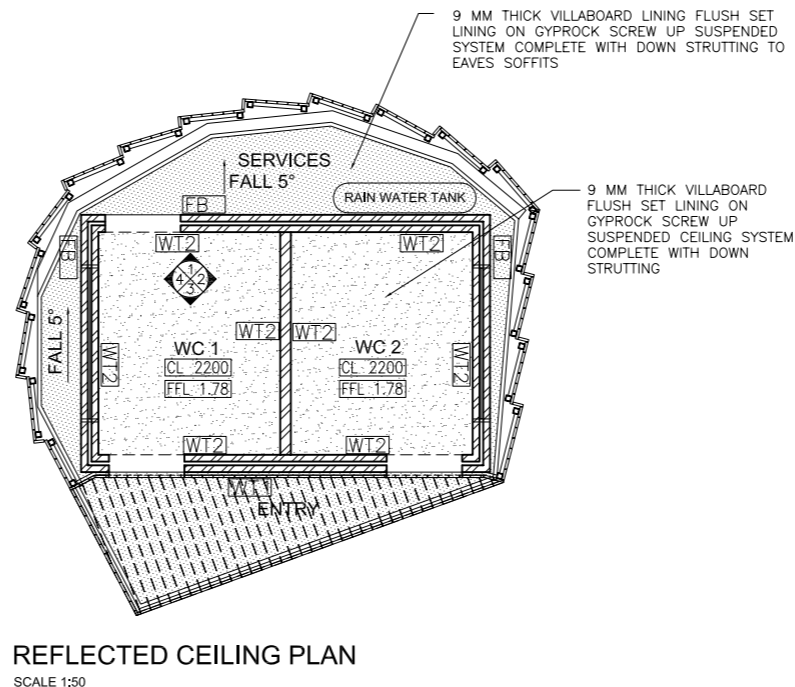
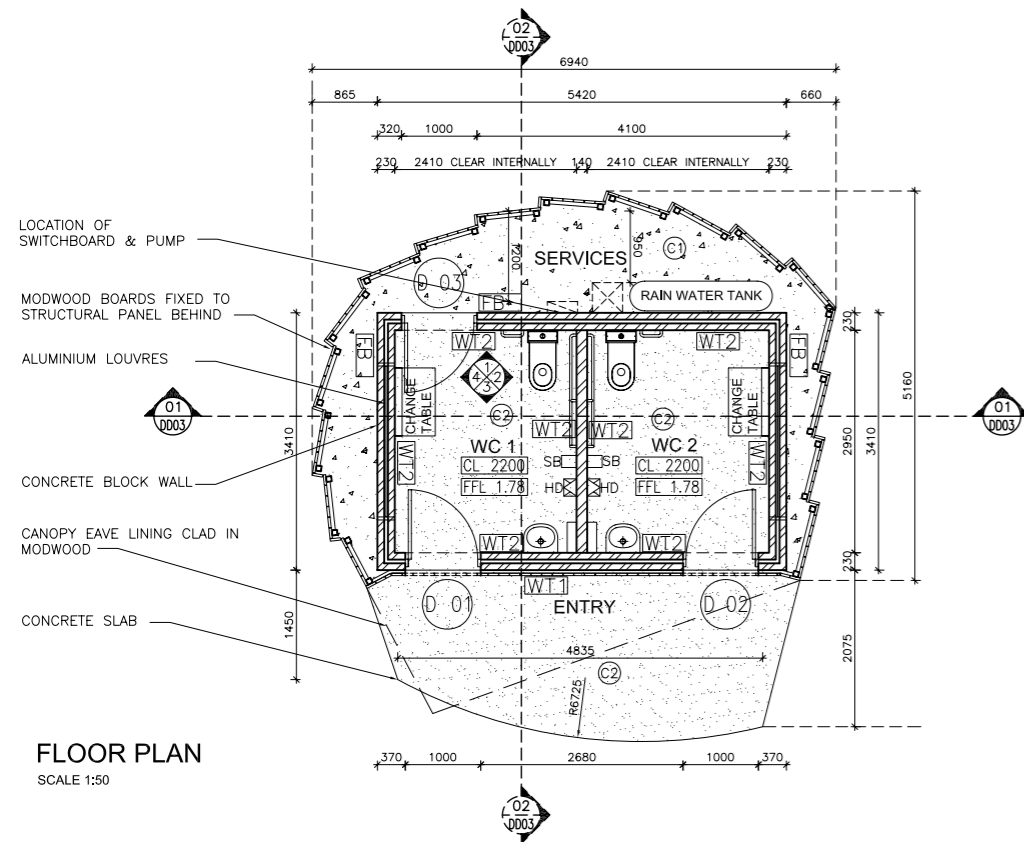




PICNIC & PLAYSPLACE SECTION A-A
SCALE 1:50



PICNIC & PLAYSPLACE SECTION B-B
SCALE 1:50



ROOF NOTE:

PROVIDE & PROPERLY FLASH ALL ROOF PENETRATIONS REQUIRED FOR SERVICES. NOT ALL ROOF PENETRATIONS ARE SHOWN ON ARCHITECTURAL DRAWINGS. REFER TO SERVICES DRAWINGS FOR DETAILS OF ALL SERVICES WHICH ARE REQUIRED TO PENETRATE ROOF.

ALL LEVELS SHOWN ON ROOF PLAN ARE THE HEIGHT TO AHD

ENSURE ALL SOAKER FLASHINGS ARE WIDE ENOUGH TO ENSURE THE ROOF IS WATER TIGHT IN ALL RAIN CONDITIONS.

PROVIDE TRIMMERS AND PROPERLY SUPPORT CUT EDGES OF ROOF DECKING AT ALL PENETRATIONS

SUPPLY AND INSTALL ROOF SAFETY ACCESS SYSTEM COMPRISING OF LADDER HOOKS, ANCHOR POINTS AND STATIC WIRES TO EQUIPMENT & GUTTERS LOCATED ON ROOF EXTENDING FROM THE LADDER HOOK LOCATION SHOWN AND COMPLYING WITH AS/NZ 1891.4

INSULATION NOTES:

SUPPLY & INSTALL AIR-CELL GLAESHIELD SISILATION BELOW ALL METAL DECK ROOFING. IN ADDITION SUPPLY AND INSTALL 110 MM THICK BRADFORD GLASSWOOL GOLD BATTS ABOVE ALL CEILINGS.

THE ROOF IS TO ACHIEVE AN OVERALL R-VALUE RATING OF R3.3 MINIMUM

CEILING NOTE:

ALL CEILING LEVELS ARE MEASURED AS THE HEIGHT ABOVE THE FINISHED FLOOR LEVEL.

NOTE THAT NOT ALL REQUIRED HATCHES ARE INDICATED ON THE ARCHITECTURAL DRAWINGS.

CEILING FRAME TO BE TRIMMED AS REQUIRED TO ACCOMMODATE RECESSED LIGHT FITTINGS & OTHER CEILING SERVICES

SUPPLY & INSTALL 9 MM THICK VILLABOARD FLUSH SET LINING ON GYROCK SCREW UP SUSPENDED CEILING SYSTEM COMPLETE WITH DOWN STRUTTING TO CEILING AND EAVES SOFFITS

GENERAL LEGEND

COL COLUMN AS SCHEDULED ON STRUCTURAL DRAWINGS

WALL TYPE LEGEND

ALL EXTERNAL WALLS SHALL BE DOUBLE CONCRETE BLOCK WALLS.

INTERNAL WALL SHALL BE SINGLE CONCRETE BLOCK WALL AS SPECIFIED TO BOTH SIDES.

[FB] FACE BLOCK AS SPECIFIED

[WT1] MODWOOD MARINA BOARDS OVER PAINTED CONCRETE BLOCK WALL

[WT2] ANTI-GRAFFITI COATING AS SPECIFIED OVER PAINTED CONCRETE BLOCK WALL

FLOOR FINISHES LEGEND

[C1] CONCRETE - SEALED NON-SLIP PLAIN FINISH

[C2] CONCRETE - BOARDWAY & FRAM PREMIX CONCRETE EXPOSED CREATIONS "ECLYPSE LIMESTONE"

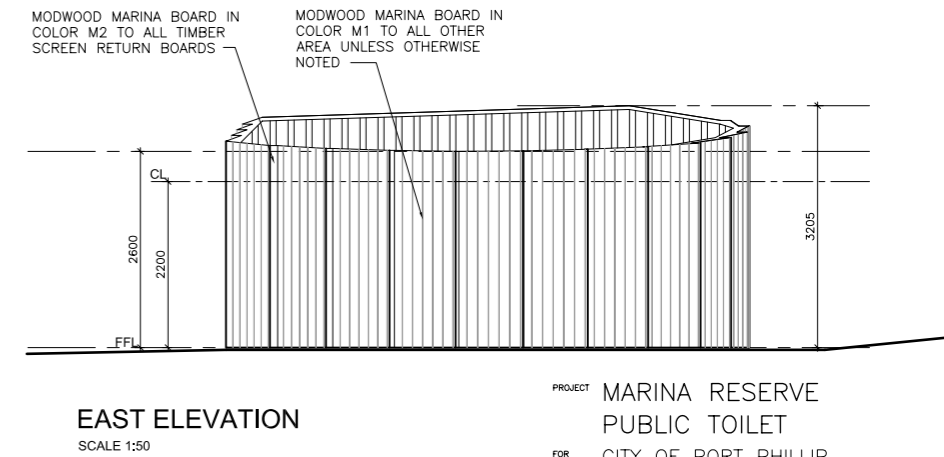
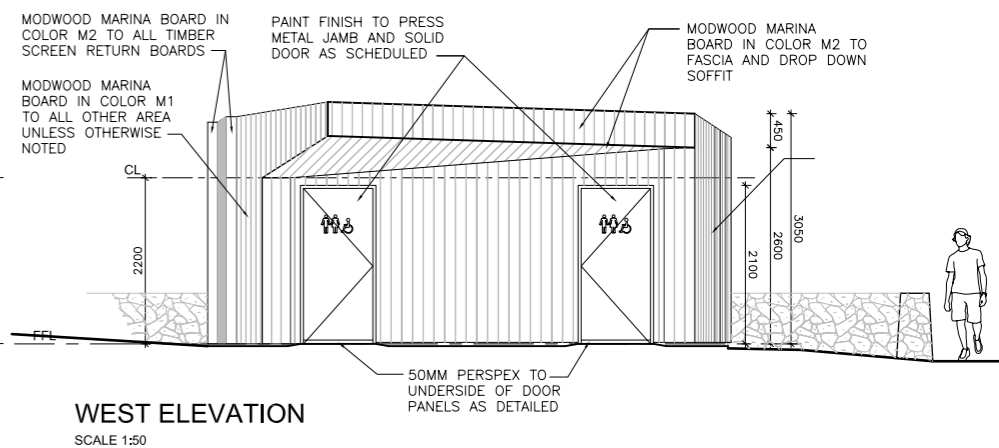
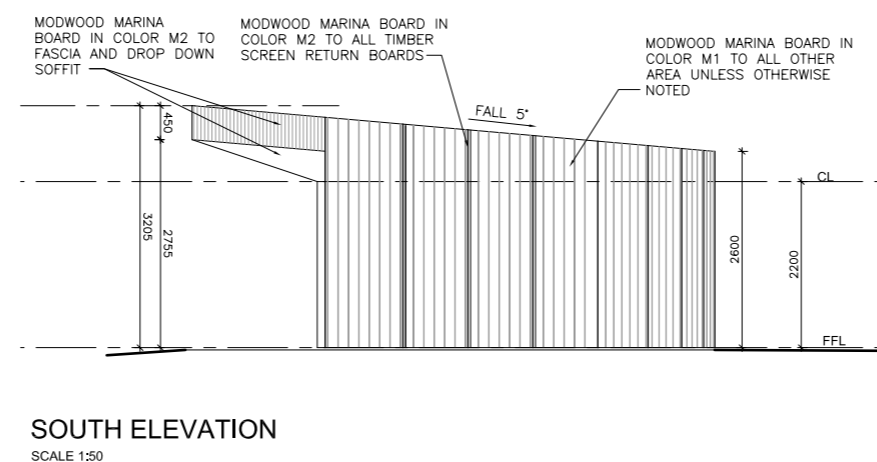
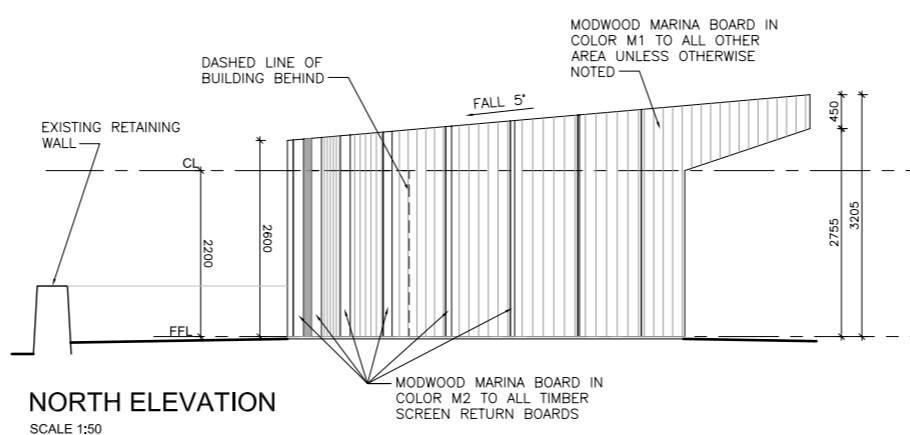
[S] COLORED GRANITIC SAND

NOTES:
ENSURE THE SURFACES OF ALL ADJACENT FLOOR FINISHES ARE FINISHED LEVEL

EXTERNAL FINISHES LEGEND

[M1] MODWOOD MARINA BOARD 137X32MM IN COLOR M1 AS SCHEDULED

[M2] MODWOOD MARINA BOARD 137X32MM IN COLOR M2 AS SCHEDULED



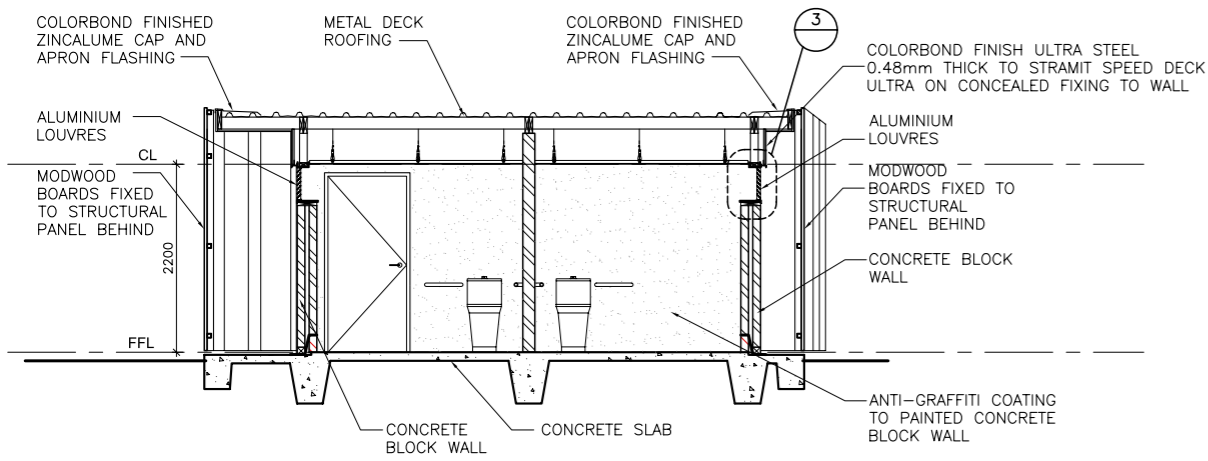
PROJECT MARINA RESERVE PUBLIC TOILET
FOR CITY OF PORT PHILLIP
DRAWING DETAILED DESIGN PLANS & ELEVATIONS

JOB NO. 11033 DWG NO. DD02 REVISION B
DATE SEPT '11 SCALE 1:50 (A1) DRAWN GC

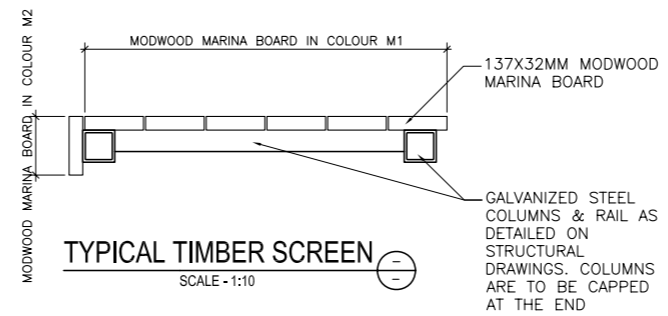
INTERIOR DESIGNERS ARTWORKS



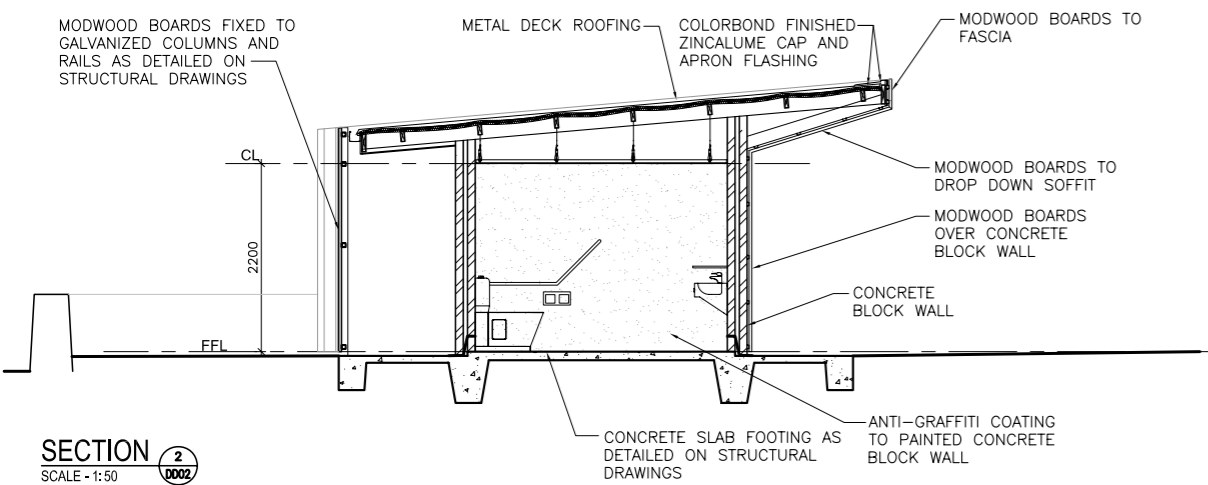
Hede Architects Pty. Ltd.
47 STOKES STREET
PORT MELBOURNE
VICTORIA 3207 AUSTRALIA
PH: 03 9646-7460
FAX: 03 9646-1933



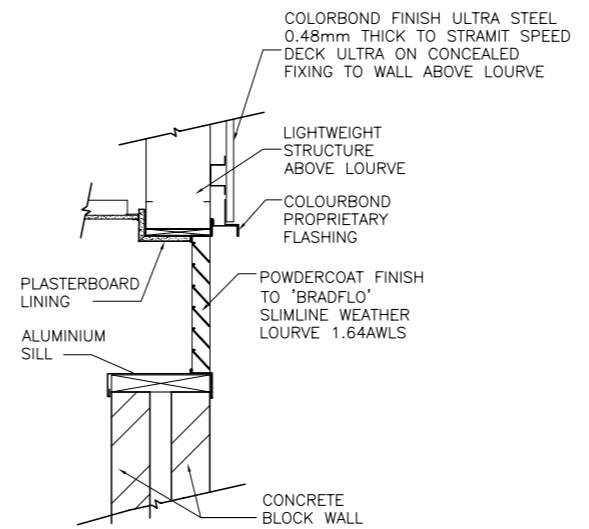
SECTION 1
SCALE - 1:50



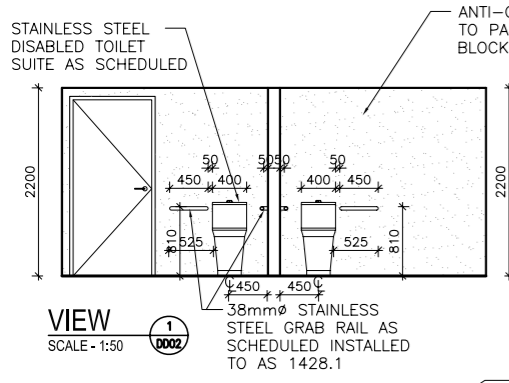
TYPICAL TIMBER SCREEN
SCALE - 1:10



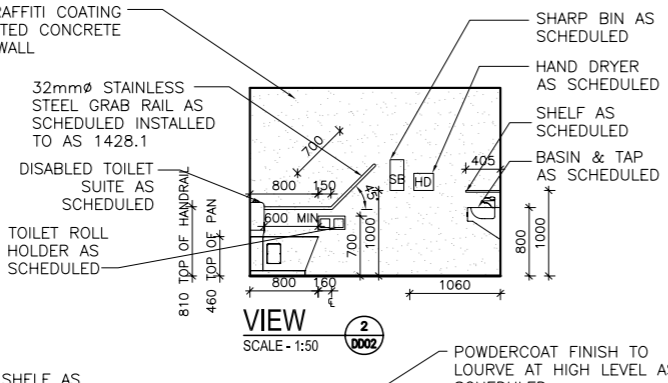
SECTION 2
SCALE - 1:50



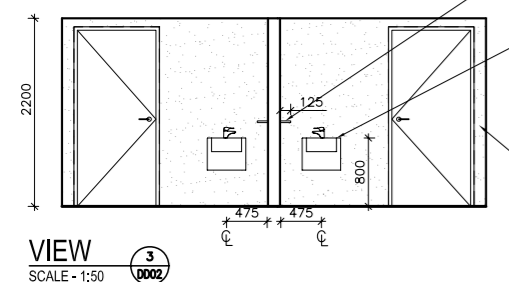
SECTIONAL DETAIL 3
SCALE - 1:10



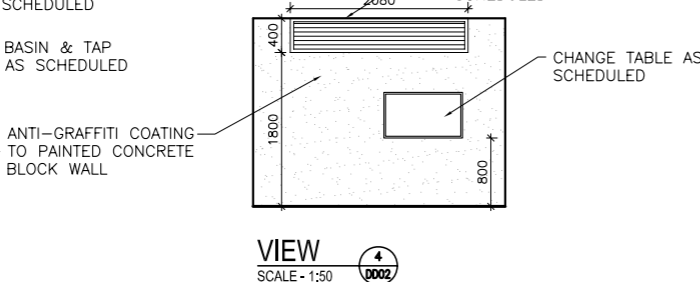
VIEW 1
SCALE - 1:50



VIEW 2
SCALE - 1:50



VIEW 3
SCALE - 1:50



VIEW 4
SCALE - 1:50

PROJECT MARINA RESERVE
PUBLIC TOILET
FOR CITY OF PORT PHILLIP
DRAWING DETAILED DESIGN
SECTIONS & DETAILS

JOB NO. 11033 DWG NO. DD03 REVISION B
DATE SEPT '11 SCALE 1:50 (A1) DRAWN GC

INTERIOR DESIGNERS ARTWORKS

Hede Architects Pty. Ltd.
47 STOKES STREET
PORT MELBOURNE
VICTORIA 3207 AUSTRALIA
PH: 03 9646-7460
FAX: 03 9646-1933



