



AFFORDABLE HOUSING IS IMPORTANT TO  
KEEP COMMUNITIES TOGETHER, IT  
IMPROVES DIVERSITY AND EQUALITY



## WHO ARE WE:

THE KIND DESIGNER IS DEDICATED TO EXPLORING SMALL FOOTPRINT DESIGN AND LIVING ALTERNATIVES. THE AIM IS TO REACTIVATE SPACE, REDUCE WASTE, AND RE-EVALUATE RESOURCES INVOLVED IN BUILDING AND NARRATIVE OF EACH PROJECT. WITH ARCHITECTURAL DESIGN, PASSIVE HOUSE PRINCIPLES AND SPATIAL JUSTICE VALUES, WE BRING SOLUTIONS TO OUR CLIENTS AS WELL AS TO THE COMMUNITY THROUGH ENGAGEMENT AND PARTICIPATORY EDUCATION.



THE.KIND.DESIGNER



@the.kind.designer



brendarocha@gmail.com



+61 452 427 955



# WHAT DO WE WANT:

REACTIVATE NEGLECTED SPACE 351 ST KILDA RD, ENGAGING THE LOCAL COMMUNITY TO CREATE A SMALL FOOTPRINT LIVING



# WHY WE WANT IT:

## AFFORDABLE HOUSING CAN BOOST LOCAL ECONOMIES

- MORE MONEY SPENT IN LOCAL COMMUNITIES.
- HEALTHIER POPULATION MEANS A HEALTHIER ECONOMY
- MORE AFFORDABLE HOUSING CREATES MORE JOB OPPORTUNITIES
  - IMPROVED GOVERNMENT INFRASTRUCTURE
  - BETTER OPPORTUNITIES FOR INVESTING IN THE FUTURE



## **WHERE CAN THIS HAPPEN:**

**351 ST KILDA ROAD, ST KILDA**

COUNCIL PROPOSES TO SELL THE LAND ON THE OPEN MARKET, BY EXPRESSION OF INTEREST, ON TERMS ACCEPTABLE TO COUNCIL, AND WITH AN ABATED PRICE SHOULD THE PURCHASER DEVELOP THE LAND FOR SOCIAL AND/OR AFFORDABLE HOUSING.



# PROPOSAL:

REACTIVATION OF A **NEGLECTED** AREA THROUGH THE EXPLORATION OF **AFFORDABLE HOUSING** ALTERNATIVES



WE BELIEVE THAT THROUGH **SMART DESIGN** AND CREATIVE USE OF SPACE, WE CAN **TRANSFORM** THE WAY WE LIVE AND INTERACT WITH OUR GROWING CITIES; TACKLING URBAN OVERCROWDING ISSUES GLOBALLY WHILST **IMPROVING THE QUALITY OF LIFE**

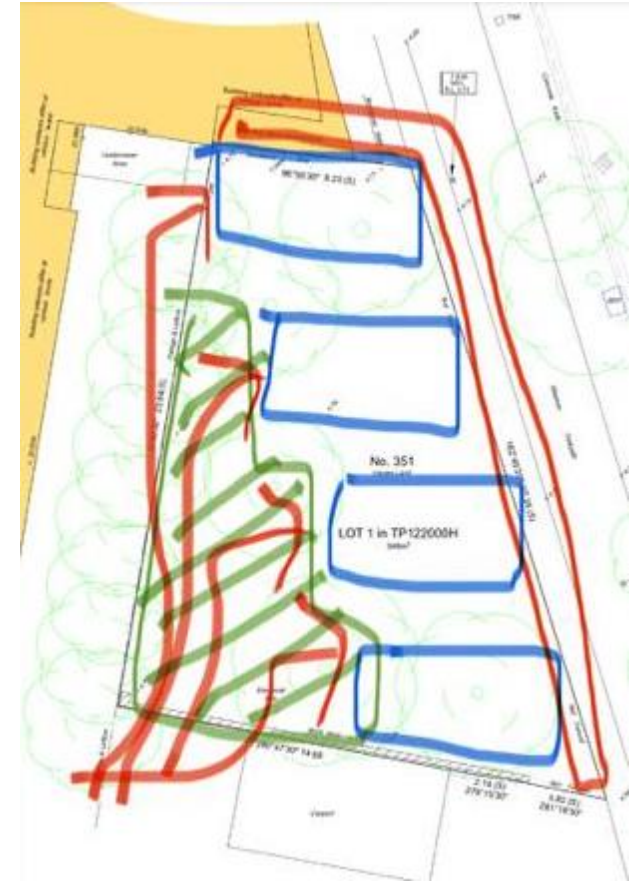
# COMMUNITY ORIENTED LAYOUT CONCEPTS EXPLORATION



1



2



3



# PROVIDE DIFFERENT SOLUTIONS BY UNDERSTANDING DIFFERENT NEEDS



# ARCHITECTURAL ENVELOPE EXPLORATION

