

Note: The drawings are to be read with regard to the scale at which the document has been issued and not the specific content of the sheet. The contractor is responsible for obtaining the correct content of the drawings. As an unincorporated document, Elenberg Fraser accepts no responsibility for alterations to persons other than the client. The drawings are intended for use as a guide only and do not constitute a contract. The drawings are the property of Elenberg Fraser and shall remain the property of Elenberg Fraser. No part of these drawings may be reproduced, stored in a retrieval system, or transmitted in any form or by any means, electronic, mechanical, photocopying, recording, or by any information storage and retrieval system, without the prior written permission of Elenberg Fraser. The drawings are the property of Elenberg Fraser and shall remain the property of Elenberg Fraser. No part of these drawings may be reproduced, stored in a retrieval system, or transmitted in any form or by any means, electronic, mechanical, photocopying, recording, or by any information storage and retrieval system, without the prior written permission of Elenberg Fraser.

SCALE@A0 1:200 SCALE@A2 1:400
PRELIMINARY
NOT FOR CONSTRUCTION

ELENBERG FRASER
 ARCHITECTURE
 LEVEL 1, 160 QUEEN STREET MELBOURNE VICTORIA 3000
 AUSTRALIA
 TEL +61 3 9600 2260 FAX +61 3 9600 2266
 MAIL@E-F.COM.AU WWW.E-F.COM.AU
 ABRN 97 536 109 720

Project Title
365-391 PLUMMER ST, PORT MELBOURNE THIRD STREET

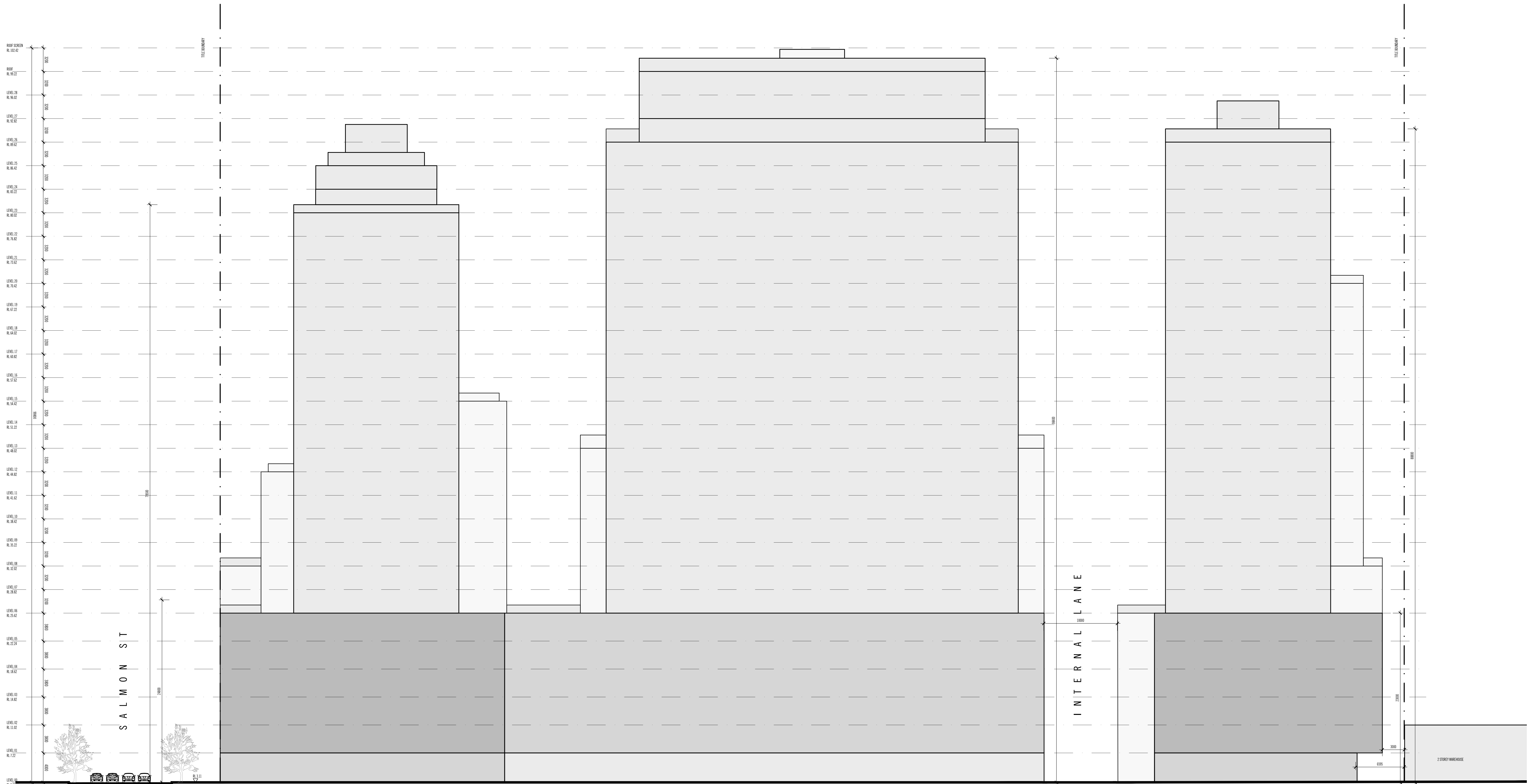
Drawing Title
MASTERPLAN WEST ELEVATION

Project Number
15134

Drawing Number
A0900

Revision
A

Rev No.	Date	Reason for Issue	Issued By	Rev No.	Date	Reason for Issue	Issued By	Rev No.	Date	Reason for Issue	Issued By
1	22.06.2020	ISSUED FOR TENDER PLANNING	MF								
1	22.06.2020	ISSUED FOR TENDER PLANNING	MF								



Rev No.	Date	Reason for Issue	Issued By	Rev No.	Date	Reason for Issue	Issued By	Rev No.	Date	Reason for Issue	Issued By
1	15/06/2020	ISSUED FOR PERMITS									

Note: The drawings are to be read with regard to the scale at which the document has been issued and not the specific nature of the issue. The contractor/consultant which is considered to be correct in the event of a discrepancy.

As an unincorporated document, Elenberg Fraser accepts no responsibility for alterations by persons other than the architect or architect-in-charge or any other person who has been authorised in writing by the architect or architect-in-charge to make such alterations.

The Client agrees to indemnify Elenberg Fraser from and against all claims, damages, losses and expenses, including reasonable legal and other costs, which may be incurred in addition to the above in connection with the use of the drawings for any purpose other than that intended by Elenberg Fraser.

Elenberg Fraser does not warrant that the drawings are free from errors or omissions, and does not accept any liability for any loss or damage, including consequential loss, which may be incurred by the Client or any other person in reliance on the drawings.

The drawings are the property of Elenberg Fraser and shall remain the property of Elenberg Fraser. No part of the drawings may be reproduced, stored in a retrieval system, or transmitted in any form or by any means, electronic, mechanical, photocopying, recording, or by any information storage and retrieval system, without the prior written permission of Elenberg Fraser.

Copyright © Elenberg Fraser 2020. All rights reserved. No part of this publication may be reproduced, stored in a retrieval system, or transmitted in any form or by any means, electronic, mechanical, photocopying, recording, or by any information storage and retrieval system, without the prior written permission of Elenberg Fraser.

SCALE@A0 1:200 SCALE@A2 1:400
PRELIMINARY
NOT FOR CONSTRUCTION

ELENBERG FRASER
 ARCHITECTURE
 LEVEL 1, 160 QUEEN STREET MELBOURNE VICTORIA 3000
 AUSTRALIA
 TEL +61 3 9600 2260 FAX +61 3 9600 2266
 MAIL@E-F.COM.AU WWW.E-F.COM.AU
 AHN 97 536 108 726

Project Title
365-391 PLUMMER ST, PORT MELBOURNE
THIRD STREET

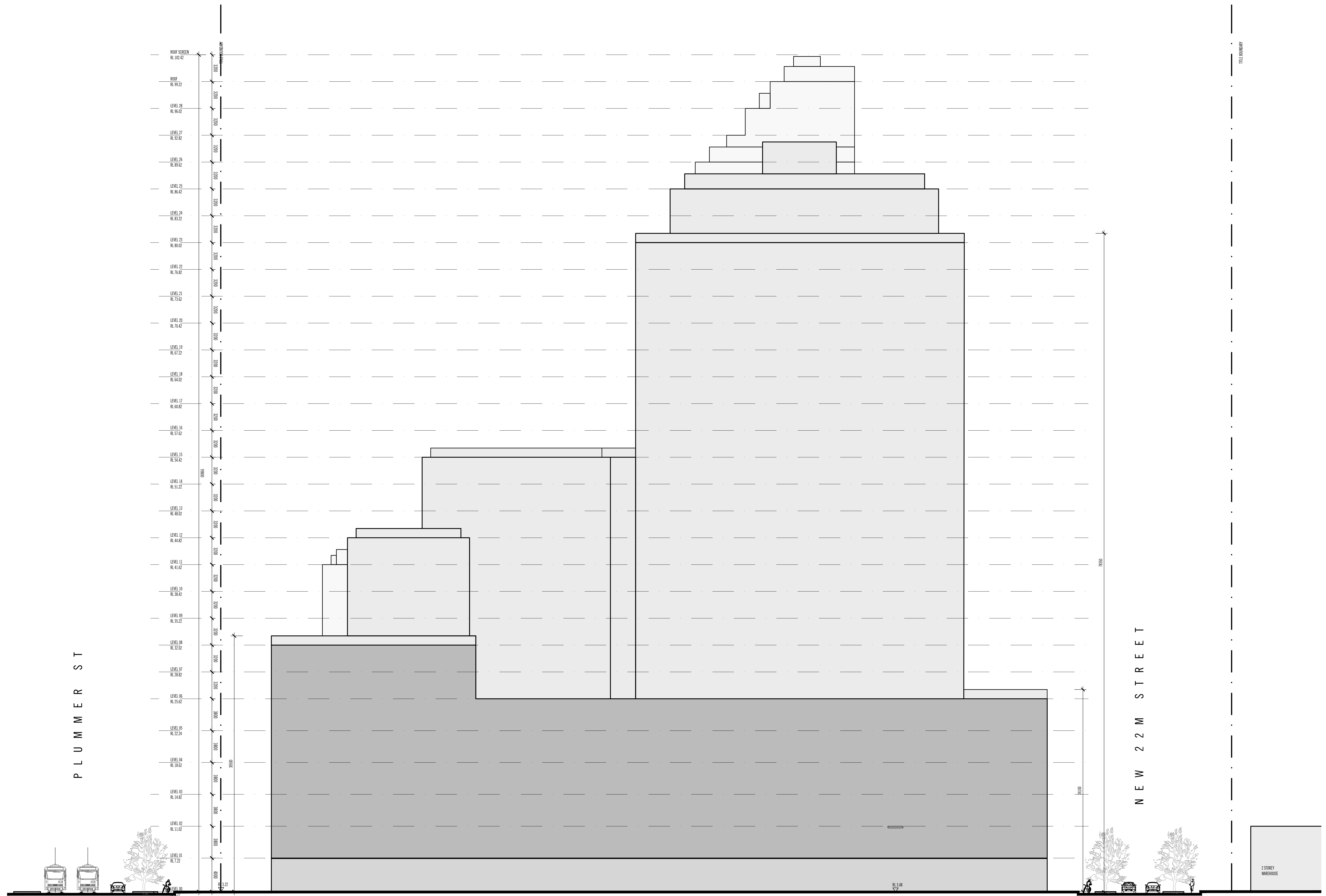
Drawing Title
MASTERPLAN NORTH ELEVATION

Project Number
15134

Drawing Status
TP

Drawing Number
A0901

Revision
A



Note: The drawings are to be read with regard to the scale at which the document has been issued and not the actual scale of the site. The contractor shall verify the construction details which is contained in the contract documents.
 As an unincorporated document, Elenberg Fraser accepts no responsibility for alterations to persons other than those shown on the drawings and for any errors or omissions in the drawings and for any consequences arising therefrom.
 The Client agrees to indemnify Elenberg Fraser from and against all claims, damages, losses, costs and expenses (including reasonable legal costs) that may be incurred by Elenberg Fraser in connection with the drawings and any other documents prepared by Elenberg Fraser in connection with the drawings and any other documents prepared by Elenberg Fraser.
 Elenberg Fraser does not warrant that the drawings and any other documents prepared by Elenberg Fraser are accurate, complete, correct, or that they will be suitable for the purposes intended or that they will comply with all applicable laws, regulations, codes of practice, standards, specifications, or other requirements.
 Elenberg Fraser does not warrant that the drawings and any other documents prepared by Elenberg Fraser are free from any errors or omissions or that they will be suitable for the purposes intended or that they will comply with all applicable laws, regulations, codes of practice, standards, specifications, or other requirements.
 Elenberg Fraser does not warrant that the drawings and any other documents prepared by Elenberg Fraser are free from any errors or omissions or that they will be suitable for the purposes intended or that they will comply with all applicable laws, regulations, codes of practice, standards, specifications, or other requirements.

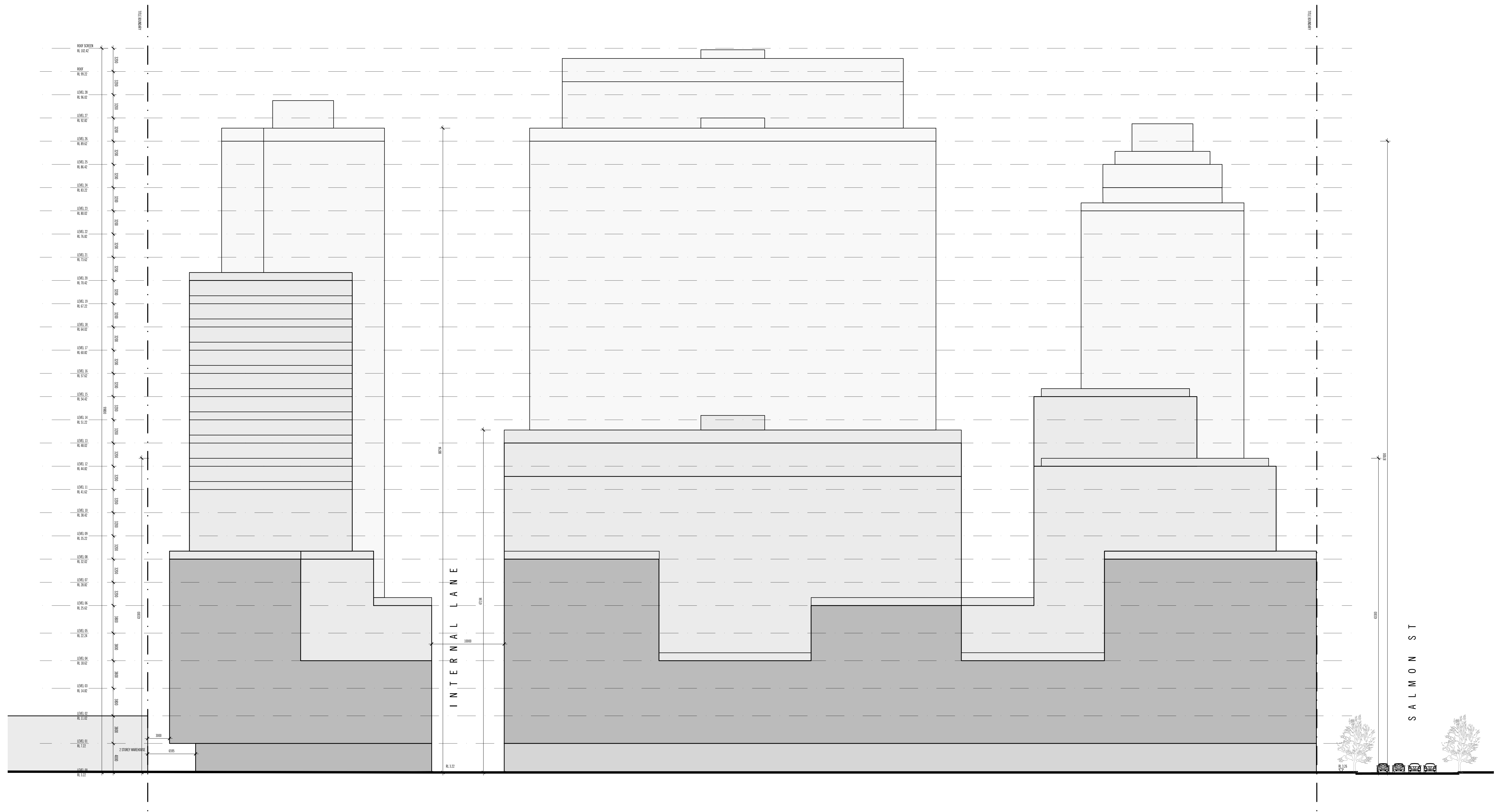
SCALE@A0 1:200 SCALE@A2 1:400
PRELIMINARY
NOT FOR CONSTRUCTION
 Figure dimensions take precedence to scale readings. Verify all dimensions on site.
 Report any discrepancies to the Architect for decision before proceeding with the work.

ELENBERG FRASER
 ARCHITECTURE
 LEVEL 1, 160 QUEEN STREET MELBOURNE VICTORIA 3000
 AUSTRALIA
 TEL +61 3 9600 2260 FAX +61 3 9600 2266
 MAIL@E-F.COM.AU WWW.E-F.COM.AU
 ABN 97 556 189 726

Project Title
365-391 PLUMMER ST, PORT MELBOURNE
THIRD STREET

Drawing Title
MASTERPLAN EAST ELEVATION
 Drawing Number
15134
 Drawing Status
TP
 Drawing Revision
A0902
 Revision
A

Rev No.	Date	Reason for Issue	Issued By	Rev No.	Date	Reason for Issue	Issued By	Rev No.	Date	Reason for Issue	Issued By
1	22.08.2019	ISSUED FOR TENDER PLANNING	ML								
1	04.09.2020	ISSUED FOR TENDER PLANNING	ML								



Drawn By	Date	Reason for Issue	Issued By	Rev No.	Date	Reason for Issue	Issued By	Rev No.	Date	Reason for Issue	Issued By	Rev No.	Date	Reason for Issue

Note: The drawings are to be read with regard to the scale at which the document has been issued and not the actual scale of the site. The contractor shall verify the accuracy of the information provided. As an unlicensed document, Elenberg Fraser accepts no responsibility for alterations to persons other than those who have been authorised to do so. The drawings are the property of Elenberg Fraser and shall remain the property of Elenberg Fraser. No part of this document may be reproduced, stored in a retrieval system, or transmitted in any form or by any means, electronic, mechanical, photocopying, recording, or by any information storage and retrieval system, without the prior written permission of Elenberg Fraser. Elenberg Fraser, its officers, employees, agents, and contractors shall not be held liable for any loss or damage, including consequential loss and costs of expenses, arising from any changes made to or from any drawings or documents of any kind. The drawings are the property of Elenberg Fraser and shall remain the property of Elenberg Fraser. All rights reserved. © Elenberg Fraser 2020.

SCALE@A0 1:200 SCALE@A2 1:400
PRELIMINARY
NOT FOR CONSTRUCTION

ELENBERG FRASER
 ARCHITECTURE
 LEVEL 1, 160 QUEEN STREET MELBOURNE VICTORIA 3000
 AUSTRALIA
 TEL +61 3 9600 2260 FAX +61 3 9600 2266
 MAIL@E-F.COM.AU WWW.E-F.COM.AU
 ABN 97 546 189 726

Project Title
365-391 PLUMMER ST, PORT MELBOURNE THIRD STREET

Drawing Title
MASTERPLAN SOUTH ELEVATION

Project Number
15134

Drawing Number
A0903

Revision
A

Date
 Jun 05, 2020 - 6:42pm