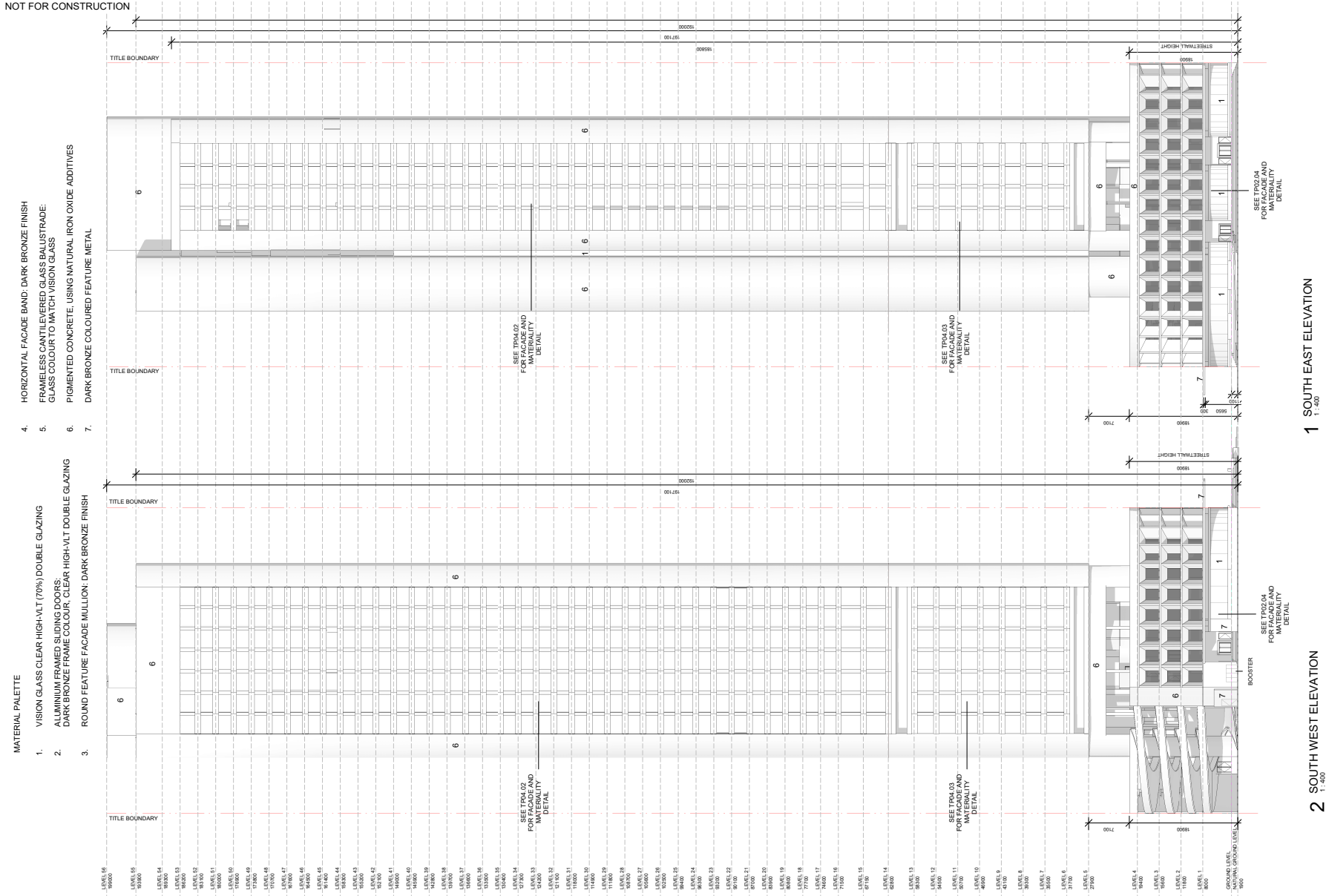


Attachment 5: Elevation Drawings



STUDIO KRISTEN WHITTLE Suite 8.03, 372 - 376 Albert Street
 East Melbourne VIC 3002, VIC, Australia
 kristen@studioakristenwhittle.com
 studioakristenwhittle.com

276 INGLES ST
 M1042
 PORT MELBOURNE VIC 3207

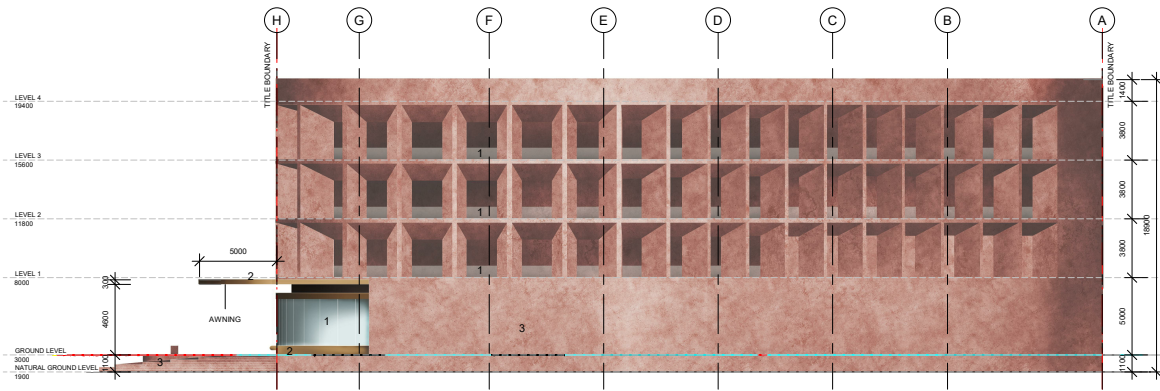
1:400 @ A2
 South East &
 South West Elevation



R TP02.02

2 SOUTH WEST ELEVATION 1:400
 1 SOUTH EAST ELEVATION 1:400

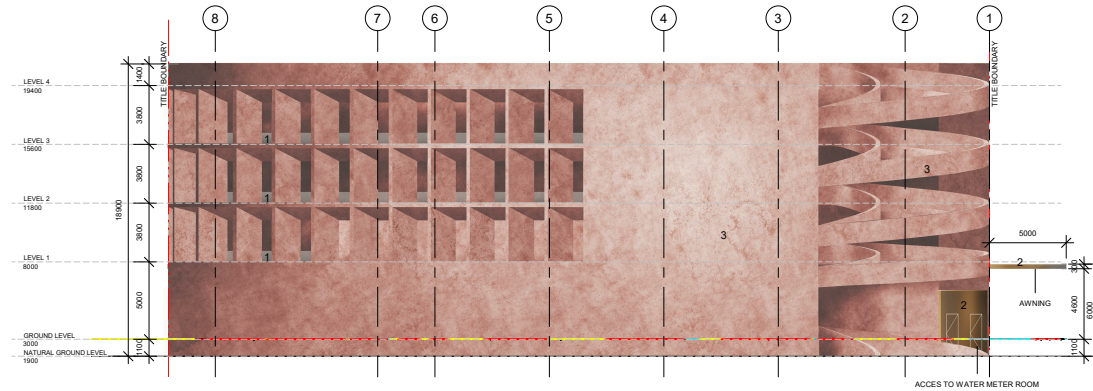
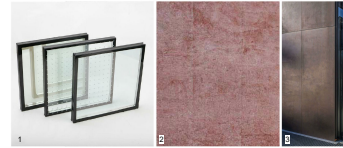
NOT FOR CONSTRUCTION



1 NORTH EAST PODIUM ELEVATION
1:200

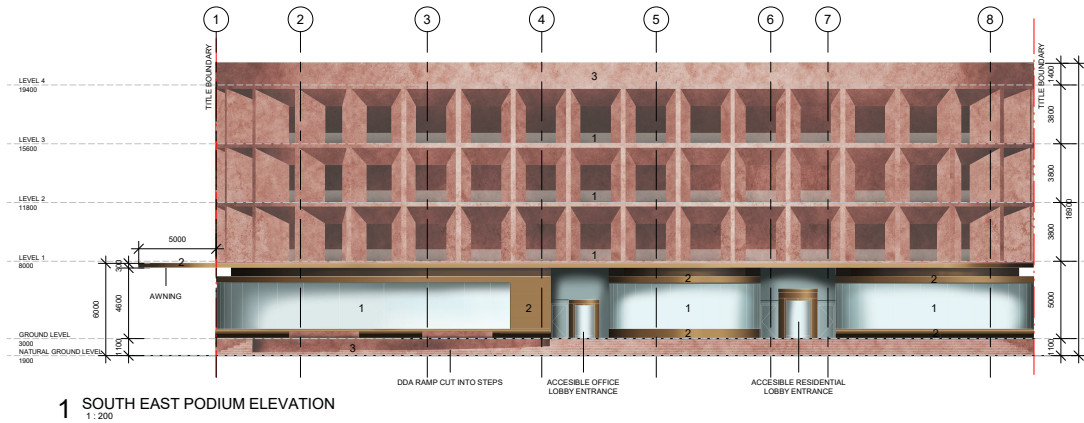
MATERIAL PALETTE

- 1. VISION GLASS CLEAR HIGH-VLT (70%)
- 2. DARK BRONZE FEATURE METAL
- 3. PIGMENTED CONCRETE, USING NATURAL IRON OXIDE ADDITIVES



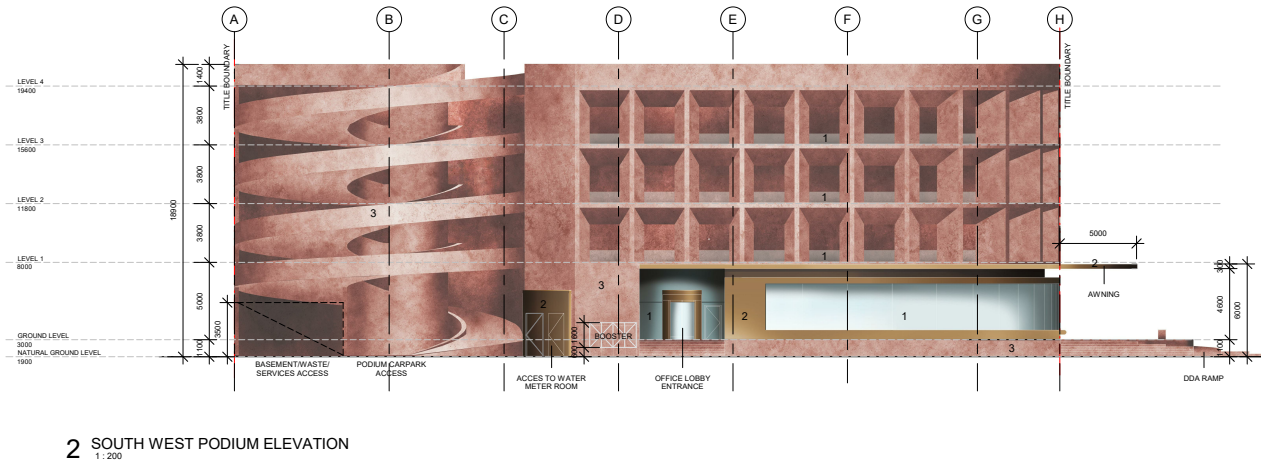
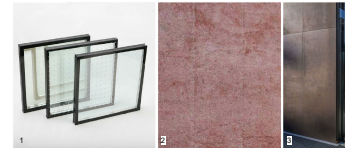
2 NORTH WEST PODIUM ELEVATION
1:200

NOT FOR CONSTRUCTION



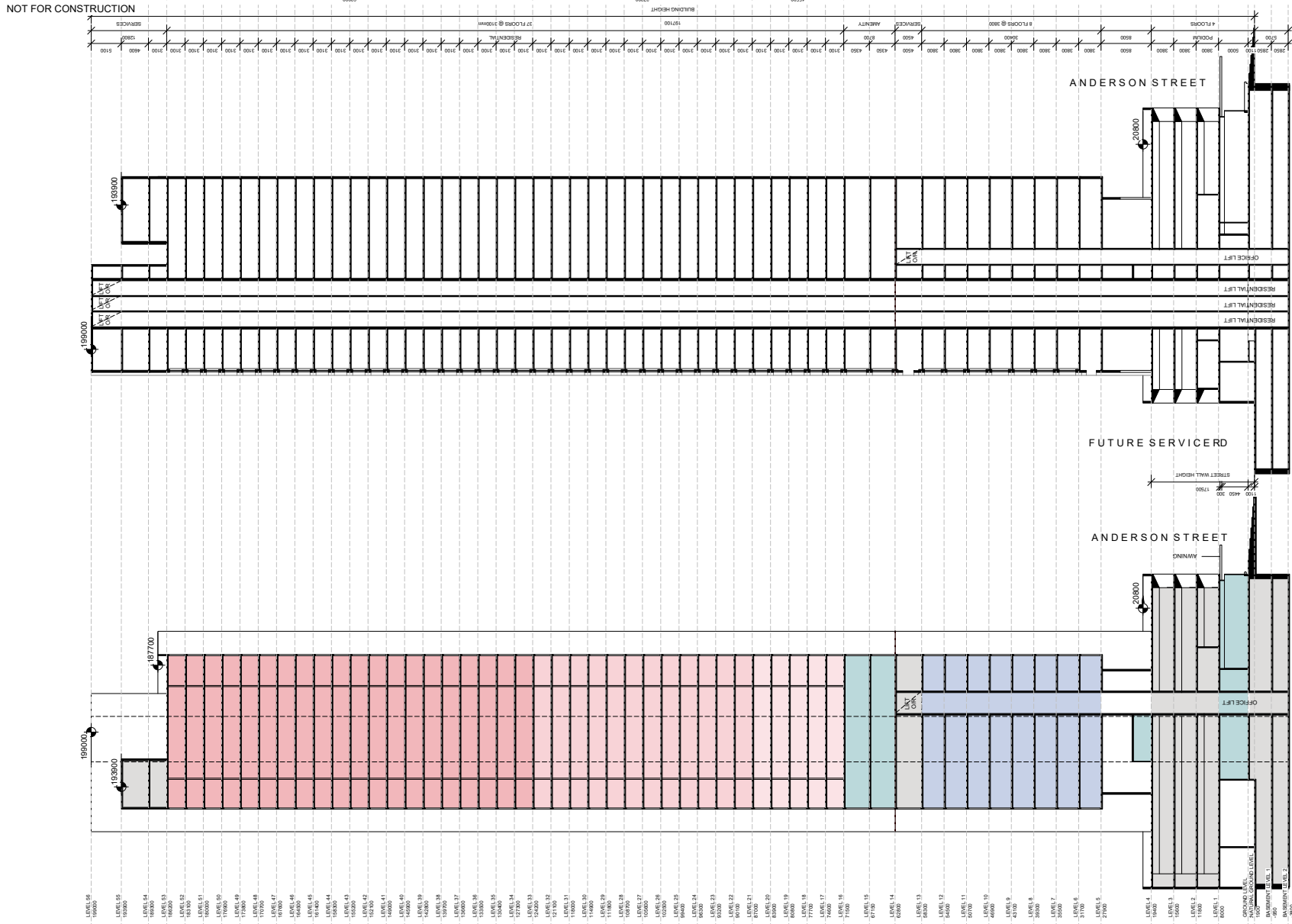
MATERIAL PALETTE

1. VISION GLASS CLEAR HIGH-VLT (70%)
2. DARK BRONZE FEATURE METAL
3. PIGMENTED CONCRETE, USING NATURAL IRON OXIDE ADDITIVES



R

Attachment 6: Section and Facade Detail Drawings



2 Section BB
1:400

1 Section AA
1:400

STUDIO KRISTEN WHITTLE Suite 8.03, 372 - 376 Albert Street
East Melbourne 3002, VIC Australia
kristen@studio-kristenwhittle.com
studio-kristenwhittle.com

276 INGLES ST
M1042
PORT MELBOURNE VIC 3207

1:400 @ A2
Building Sections



R

TP03.01