



WASTE AND RECYCLING SERVICES

A GUIDE TO REDUCING OUR IMPACT IN 2011

SERVICE BASICS

RECYCLING

Weekly collection of your bin with the yellow lid.

For all recyclable containers, paper and cardboard.

Recyclables are used to make new products.



GARBAGE

Weekly collection of your bin with the green lid.

For all garbage.

Everything in your garbage bin is taken to landfill.



HARD WASTE

CALL FIRST

Four free pickups.

Booking service.

See page 12 for more information.



Repairs and new bins

If your bins are damaged or lost, or you have moved into a new property and need bins provided please call ASSIST on 9209 6777 or visit www.portphillip.vic.gov.au

CONTENTS

Your service basics	2	Garbage and recycling collection days	10
A little effort goes a long way	3	Hard waste and green waste	12
Recycling weekly collection	4	Compost your greens	14
Sustainable living at home	6	Resource Recovery Centre	15
Detox your home	7	How recycling works	16
Garbage weekly collection	8	Bin it or swim in it!	17
On collection day	9	A to Z guide	18

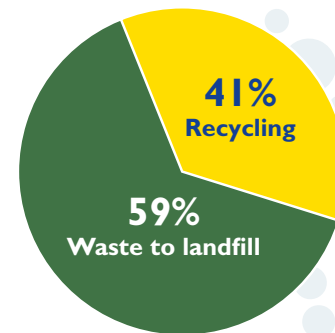
A LITTLE EFFORT GOES A LONG WAY

What does sustainable mean to you?

To our environment it means that what we do today makes an impact on what we will live with tomorrow.

Port Phillip residents currently recycle 41% of total waste through kerbside recycling bins. What a great effort!

But there is still 59% of our waste going to landfill. The challenge is that we may run out of space to bury our waste if we continue this way.



You can improve the future!

Recycling is a great start and by practising recycling and reuse as well, you will make a change for the better.

Would you like to put your bin out less often, or put out a lighter bin each week?

This booklet will give you some great practical ideas on how to change your habits. It covers essential information about what goes into your bins and what you need to do on collection day.

Our comprehensive A to Z Guide on page 18 will show you what you can do with more than 100 common household waste items.

A typical Port Phillip bin. How does your bin compare?



www.portphillip.vic.gov.au



www.sustainability.vic.gov.au

RECYCLING WEEKLY COLLECTION

Put these items into your yellow lid recycling bin

- 

Glass bottles and jars


- 

Plastic milk, juice, soft drink and detergent bottles


- CODES


- 

Aluminium and steel cans, aerosols and clean foil


- 

Milk and juice cartons





Bins must be at kerbside by 6am on collection day

- 

Plastic plant pots


- 

Cardboard boxes (crushed/torn to prevent jamming)


- 

Letters, envelopes and advertising material


- 

Newspapers and magazines


- 

Work and school papers, copy paper and telephone books





Recyclables must be inside your bin.
Items outside your recycling bins will not be collected.

NOT ACCEPTED

Do NOT put these items in your recycling bin

 <p>Plastic bags</p>	 <p>Waxed cardboard</p>
 <p>Food waste</p>	 <p>Green waste</p>
 <p>Broken crockery or Pyrex</p>	 <p>Nappies</p>
 <p>Cooking oil, chemicals or liquids</p>	 <p>Syringes</p>

 <p>Plastic wrap</p>	 <p>Gas cylinders</p>
 <p>Wire or rope</p>	 <p>Window glass</p>
 <p>Batteries or car parts</p>	 <p>Clothing, shoes or toys</p>

SUSTAINABLE LIVING AT HOME

Make small changes in the habits at your home, and you can make waste reduction part of your every day life. The small change you make, added with the small change your neighbour makes, and the small change the family down the road makes all add up to a sustainable future.

Why reduce waste?

Saves material from landfill:

It makes sense to reduce the waste we send to landfill. Landfill space is limited, not just in Port Phillip, but across Victoria and Australia. Landfills need careful management to protect the surrounding environment.

Protects our environment:

Our environment benefits greatly when waste is diverted from landfill. Furthermore, energy use is less and green house gas emissions are reduced when products are made using recycled components.

Creates a sustainable future:

Starting the right habits now will ensure that future generations can live in a healthy environment.

When you shop

- Take reusable bags when you go shopping
- Avoid products with extra packaging
- Buy recycled wherever possible
- Buy products that come in reusable or recycled packaging
- Buy in bulk
- Buy laundry and detergents as concentrates – they use less packaging.

The waste hierarchy gives you ideas to get started (or keep going).



When at home

- Recycle everything you can, including all plastic containers with codes ♻️1 to ♻️7
- Start a compost heap. See page 14 to learn how
- Take old toys, clothes and shoes to charity or an op-shop
- Reuse takeaway food containers for leftovers
- Reuse envelopes for note paper
- Reuse plastic shopping bags as bin liners
- Take plastic shopping bags back to your supermarket for recycling.

Refer to the A to Z Guide on page 18 for a comprehensive list of what you can do with over 100 items when you have finished with them.

Community Environment eHub

For more solutions to our waste challenge and other sustainability challenges, visit our Community Environment eHub at www.enviroehub.com.au.

Take action through practical information, useful tools, case studies, local programs and new ideas.

DETOX YOUR HOME

Every home has products such as chemicals, paint, kitchen or bathroom cleaners and batteries which are past their 'use by' date or no longer wanted. These items must never go into your household garbage or recycle bin. Paint, household batteries, electronic waste (televisions, computers etc) and light bulbs/tubes can now be disposed of at the Resource Recovery Centre (page 15).

Other substances such as chemicals and cleaners must be disposed of via safe and controlled methods such as Detox Your Home collections. Sustainability Victoria run free Detox Your Home collections for the City of Port Phillip and other councils all over the state. Contact ASSIST on 9209 6777 or visit www.resourcesmart.vic.gov.au for information.



GARBAGE WEEKLY COLLECTION

Put these items into your green lid garbage bin



General household waste
eg. food waste, meat, soiled
paper and cling wrap



Broken window glass
(wrapped), Pyrex,
tableware and ceramics



Nappies (wrapped)



Plastic bags



NOT ACCEPTED

Do NOT put these items in your garbage bin

Refer to the A to Z Guide on page 18 for disposal details

X Wire or rope **X** Batteries or car parts



Cooking oil,
chemicals or liquids



Gas cylinders



Recyclables



For more information
about syringe or needle
disposal please contact
ASSIST on 9209 6777
or hotline 1800-552-355.

ON COLLECTION DAY

Follow these guidelines to help make collection easy and efficient.



Face the wheels of
your bins away from
the roadside and close
to the kerb.



Place bins at least half a metre from other bins,
power poles, cars and other objects.



**Bins must be at the
kerbside by 6am on
collection day.**

Overfilled bins will not be
emptied. They cause street
litter and are too heavy for our
trucks to empty. Extra bags and
boxes cannot be collected.



Think about this...

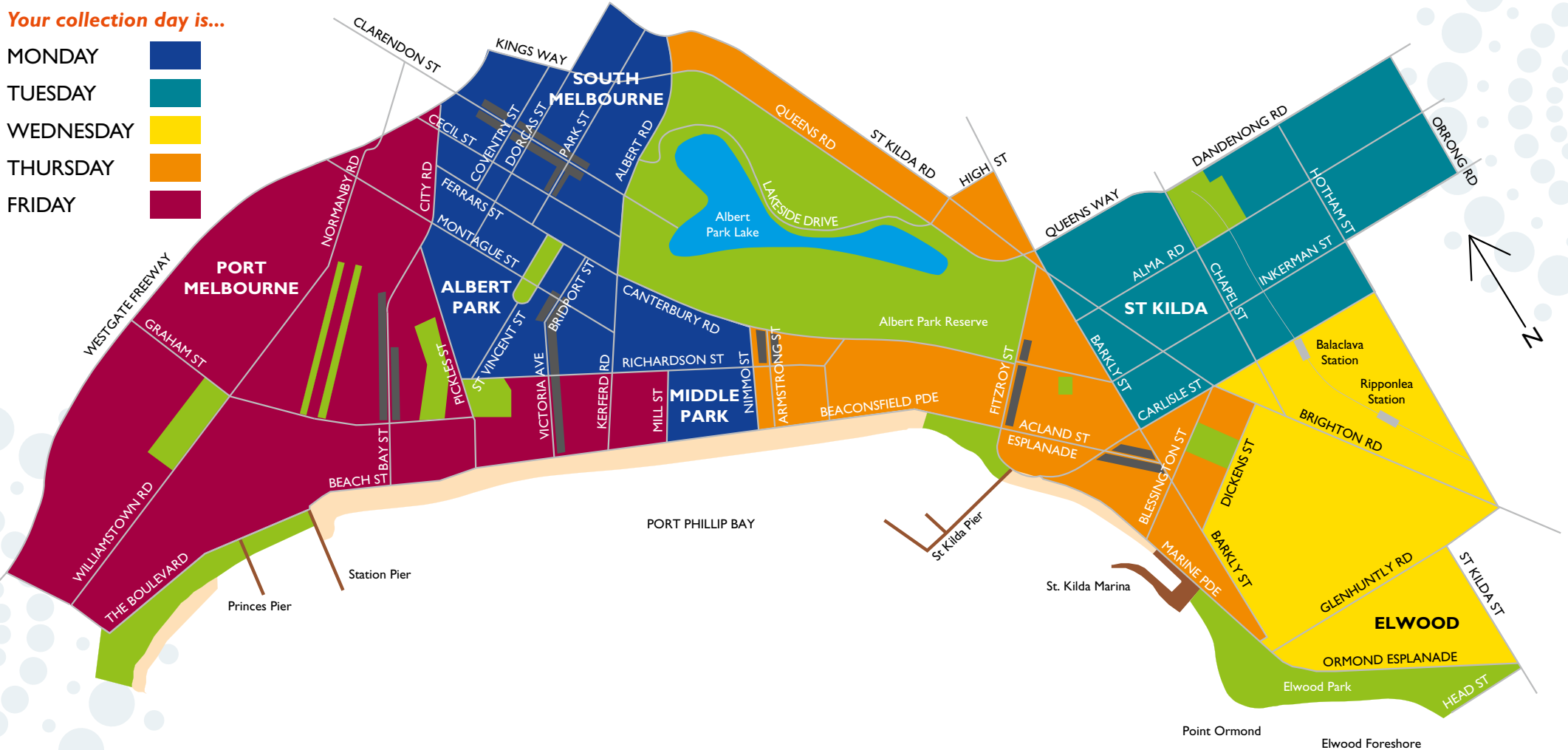
Everything in your garbage bin ends up as landfill –
and some of it might have life left in it!
So, before you put an item into your garbage bin
check if it can be reused, recycled or composted.
See pages 18–19.

GARBAGE AND RECYCLING COLLECTION DAYS

Garbage and recycling bins are emptied weekly. The map shows your collection day.

Your collection day is...

- MONDAY
- TUESDAY
- WEDNESDAY
- THURSDAY
- FRIDAY



On collection day

- Ensure bins are at the kerbside by 6am.
- Please take your bins inside within 24 hours of collection.



Notes about bins

Damaged bins will be repaired or replaced. Stolen or missing bins will be replaced after a bin application has been completed. Bins remain Council property.

Please leave your bin at the property if you change your address. Please keep your bins clean. To report a damaged or stolen bin please call ASSIST 9209 6777.

HARD WASTE AND GREEN WASTE COLLECTION

Guide to arranging pickup

Port Phillip households are entitled to **four free pickups** each year. **You MUST BOOK BEFORE** you put your rubbish out.

Dumping rubbish is illegal in the City of Port Phillip. To avoid a fine please **dispose of your unwanted goods via the hard and green waste booking service or by taking it to the Resource Recovery Centre (page 15).**



COMPOST YOUR GREENS

Creating compost is one way that you can cut down on the waste you send to landfill... and give something back to your garden!

Composting is a natural process where organic materials (like food scraps and garden waste) break down to form a rich soil.

You can use this rich compost to provide your garden with nutrients. A layer of compost or mulch on your garden will keep the moisture in and cut down on the need to water.



Here's how

The Port Phillip Resource Recovery Centre, St Kilda EcoCentre and Depot sell compost bins and worm farms at a reduced price to residents. For contact information see page 15.

Sustainability Victoria provides a step by step guide to creating a good compost. Visit www.resourcesmart.vic.gov.au



RESOURCE RECOVERY CENTRE

Location

Corner White and Boundary Streets,
South Melbourne. Melway reference 2E F11
Phone: 9209 6686 or 9209 6533

Hours

Monday to Friday 7.30am to 3.30pm
Saturday and Sunday 9am to 1pm
Closed all public holidays

Drop off

Garbage

General household rubbish
Furniture
Car tyres
Timber in small amounts
(take larger amounts to Sunshine tip)

Recyclables

General household recyclables
(glass, cans, plastic, paper and cardboard)
Clean green waste
Iron and steel in small amounts
White goods and electronic waste
Household batteries* and light bulbs
Gas bottles, motor and cooking oil
Corks and used plastic pots
Household paint

Fees and charges

Recyclable items: A car boot load is free of charge, larger amounts incur a fee.

Non recyclable items: A fee is charged for all rubbish.

Green waste: Up to one trailer load is free of charge to residents.

NO bricks, soil or building rubble can be taken to the Resource Recovery Centre. They must be taken to landfill (eg. Sunshine tip, Old Geelong Road, Brooklyn).



Green waste is mulched and the mulch is available free to Port Phillip residents (subject to availability).

Used plant pots are available free to Port Phillip residents.

* Batteries can also be dropped off at Municipal Town Halls.

HOW RECYCLING WORKS



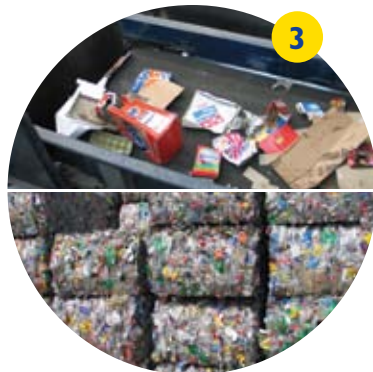
All recyclables including paper and cardboard go into your recycling bin.



A collection vehicle empties your recycling bin and takes the recyclables to a materials recycling facility. A different vehicle empties your garbage and takes it to landfill.



The recyclables are sorted...



...and baled.



Soft drink cans become new aluminium cans

Plastic bottles become detergent bottles

Ice cream containers become plastic bollards

Recycled paper becomes new paper

4 Recyclables are then used by manufacturers to make new products.

Beyond your bin

Recycling covers more than what is in your household recycling bin. The city works hard at recycling all we can from waste. Many of the items picked up as part of the city's Hard Waste Booking Service, and dropped off at our Resource Recovery Centre are recycled.

BIN IT OR SWIM IN IT!

Litter is more than just plastic bags and cigarette butts. Grass clippings that are swept into the gutter, bottles or papers that blow out of your bin, dog poo that is not picked up by its owner – it's all litter.

Most litter ends up in our drains and our drains flow straight into Port Phillip Bay.

So if you don't want to swim in it, make sure you bin it.

Port Phillip is tackling litter with:

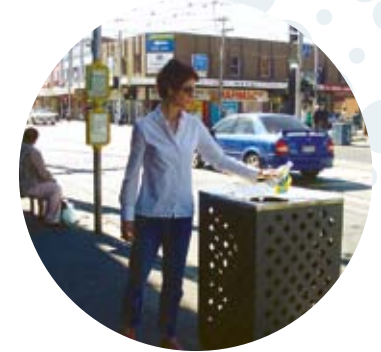
- Litter traps are installed in beach end drains to stop litter going into the bay
- Daily summer beach cleaning (by machine and by hand)
- Regular street cleaning to keep litter out of our drains
- Recycling and litter bins in parks and streets
- Yearly education and anti-litter campaigns run throughout the city, such as the 'No cuts, no butts' initiative and beach ranger patrols.

You can help

- Use a personal ashtray for your cigarette butts
- Pick up after your pet
- Make your picnic rubbish free
- Use our public litter and recycle bins or take your rubbish home
- Don't overfill your household bins



It takes forever to break down
 Train ticket? two to four weeks
 Cigarette butt? three to four years
 Plastic bottle? 450 years



REMEMBER
 Littering is an offence.
 Fines range between \$100 and \$6,000.

A-Z GUIDE TO WASTE AND RECYCLING

A Call ASSIST on 9209 6777	L Landfill. Refer to Yellow Pages
B Hard Waste Booking. Refer to pg 12	R Recycling bin. Refer to pg 4
C Compost bin/worm farm. Refer to pg 14	T Resource Recovery Centre. Refer to pg 15
D Detox your home. Refer to pg 7	X Charities/Op Shops
G Garbage bin. Refer to pg 8	Y Refer to Yellow Pages
K School, childcare or kindergarten	Z Return to your local supermarket

Aerosol cans	R	Cardboard	R T	Detergent bottles (plastic)	R
Aluminium cans	R	Carpet/carpet underlay	B	Disposable nappies	G
Aluminium foil	R	Cartridges (printer/toner)	Y	Dog poo	C G
Animal droppings	C G	Cassette tapes	G	Doors	B T
Asbestos	A Y	Cellophane	G	Drink cans	R
Bag ties	G	Ceramics	G	Drums (empty)	T
Band aids	G	Cereal box inserts	G	Electrical appliances	B T
Baskets	G	Cereal boxes	R	Envelopes	R
Batteries	D T	Chemicals	D	Eye glasses	X
Batteries (alkaline, NiMH)	D T	Cigarette butts	G	Fluorescent tubes	D T
Batteries (car)	D T	Cleaning rags	G	Foam boxes	G
Batteries (NiCad)	D T	Cling wrap	G	Foam meat trays	G
Beer bottles	R	Clothing	X T	Foam underlay	G
Books	X	Clothing baskets	X	Foil (clean)	R
Bottle tops (plastic)	R	Coffee cans/jars	R	Food cans	R
Bottle tops (metal)	R	Computer paper	R	Food waste	C G
Bottles (glass, plastic)	R	Computer parts	T	Fridges	B T
Boxes (cardboard)	R T	Concrete	L	Fruit & vegetable scraps	C G
Branches	B T	Corks	T	Furniture	X B
Bricks or rubble	L	Cosmetic jars	R	Garden waste	C B T
Building materials	L	Cotton reels	K	Gas bottles	D T
Cake trays (plastic)	R	Cotton wool buds	G	Glad wrap	G
Cans	R	Cups and saucers (intact)	X	Grass clippings	C
Car batteries	D T	Cups and saucers (broken)	G	Greeting cards	R
Car/auto parts (small)	B T	Curtains	X	Hot water units	B T
Carbon paper	G	Cutlery (metal)	X	Household chemicals	D
		Cutlery (plastic)	G	Household goods	X

Hypodermic needles	A	Paint	D T	Sporting goods	X
Ice cream containers	K R	Paint tins (dry)	B T	Steel (other than tins & cans)	B T
Ice cream container lids	K R	Pallets	T	Steel cans	R
Jar lids (metal)	R	Paper towel roll	R	Stoves	B T
Jar lids (plastic)	R	Pet food tins (rinsed)	R	Styrofoam	G T
Jars	R	Pharmaceuticals	D A	Sweet wrappers	G
Juice cartons	R	Phonebooks	R	Syringes	A
Junk mail	R	Picture frames	X G	Take away containers (empty & clean)	R
Kitty litter	C G	Pizza boxes (empty)	R	Tea bags	C G
Leaves	C	Placemats	X G	Telephone books	R
Light bulbs	G T	Plant cuttings	C B T	Televisions	B T
Light tubes	D T	Plant pots	T R	Textiles	X
Lolly wrappers	G	Plasterboard	L	Timber	B L T
Lunch boxes	X	Plastic bags	Z G	Tin cans	R
Magazines	X K R	Plastic codes 1,2,3,4, 5, 6 & 7	R	Tissues	G
Manure	C G	Plastic strapping	G	Toilet paper rolls	R
Margarine tubs	R	Plastic wrappers	G	Toner cartridges	Y
Matchboxes	R	Plate glass (wrapped)	G	Tools	B T
Mattresses	B T	Polystyrene	G T	Toys	X
Meat scraps	G	Printer/toner cartridges	Y	Tree prunings	B C
Meat trays (foam)	G	Pyrex ovenware (broken)	G	Twine	G
Medicine bottles (empty/rinsed)	R	Pyrex ovenware (intact)	X	Tyres	L
Medicines	D A	Rubble	L	Vacuum cleaner dust	G C
Milk bottles	R	School bags	X	Vegetable scraps	C G
Milk cartons	R	Scrap metal	B T	Vinyl	K G
Milk containers (plastic)	R	Seedling containers	T R	Washing machines	B T
Mobile phones	A T	Shoes	X G T	Waxed cardboard	G
Motor oil	T	Silver foil	R	Waxed paper	G
Nappies (disposable)	G	Smoke alarms	G	Weeds	C G
Needles	A	Soft drink bottles	R	White goods	X B T
Newspapers	R	Soft drink cans	R	Windows	T
Office paper	R	Soil	L	Wine bottles	R
Oils	T D	Spectacles	X	Wrapping paper	R
Ovens	B T	Spirit bottles	R	Yoghurt containers	K R

This information is provided by the City of Port Phillip to inform residents about Council services and responsibilities. For a translation of this information contact the Council's interpreter service.

本资料由 Port Phillip 市政厅提供，向居民提供市政服务和责任方面的信息。和市政厅的翻译联系，索取翻译资料。

拨打 9679 9810 索取中文翻译资料

Αυτές οι πληροφορίες παρέχονται από το Δήμο Port Phillip για την ενημέρωση των κατοίκων σχετικά με τις δημοτικές υπηρεσίες και υποχρεώσεις. Για μετάφραση αυτών των πληροφοριών επικοινωνήστε με την υπηρεσία διερμηνέων του δήμου.

Για μετάφραση στα ελληνικά τηλεφωνήστε στο 9679 9811

Эта информация об услугах и обязанностях муниципалитета Port Phillip представлена для жителей муниципалитета. Чтобы получить перевод этой информации, звоните в муниципальную службу переводчиков.

Для перевода на русский язык звоните по тел. 9679 9813

Niniejsza informacja pochodzi z Urzędu Gminy Port Phillip w celu powiadomienia mieszkańców o usługach i obowiązkach naszego Urzędu. Egzemplarz tej informacji w języku polskim otrzymać można kontaktując się ze służbą tłumaczeń Urzędu.

Po tłumaczenie w języku polskim prosimy dzwonić pod numer 9679 9812

www.portphillip.vic.gov.au
ASSIST 9209 6777

Printed on recycled paper using vegetable based inks