

LEVEL 09  
RL: 35.900 (ISTH)

LEVEL 08  
RL: 32.700 (ISTH)

LEVEL 07  
RL: 29.600 (ISTH)

LEVEL 06  
RL: 26.500 (ISTH)

LEVEL 05  
RL: 23.400 (ISTH)

LEVEL 04  
RL: 20.000

LEVEL 03  
RL: 15.600

LEVEL 02  
RL: 11.800

LEVEL 01  
RL: 8.000

GROUND  
RL: 4.000

34598

31897

17200

4000

MFR11  
TOWER BALUSTRADE

GL02  
TOWER GLAZING

CONC01  
TOWER COLUMN

CONC02  
PODIUM CONCRETE WALLS, SLAB + CANOPY

GL0303  
PODIUM GLAZING

MFR11  
PODIUM BALUSTRADE

GL02  
PODIUM GLAZING

GL0303  
GROUND FLOOR GLAZING

RPFR11  
GROUND FLOOR RENDER

ROCKLEA DRIVE

GROUND FLOOR  
AHD 4.000

**SCHEDULE OF AMENDMENTS**

- ▲ 4 STORIES REMOVED
- ▲ SLAB LEVELS AMENDED

Rev No.	Date	Reason for Issue	Issued to	Rev No.	Date	Reason for Issue	Issued to
1	15/03/19	ISSUED FOR TOWN PLANNING	MC				
2	15/03/19	ISSUED FOR TOWN PLANNING	MC				

**PRELIMINARY NOT FOR CONSTRUCTION**

SCALE@A0 1:100 SCALE@A2 1:200

Report any discrepancies to the Architect for resolution before proceeding with the work.

**ELENBERG FRASER**  
LEVEL 1, 150 QUEEN STREET  
MELBOURNE VICTORIA 3000 AUSTRALIA  
TEL +61 3 9000 2200 FAX +61 3 9000 2265  
EMAIL MAIL@ELENBERGFRASER.COM  
WWW.ELENBERGFRASER.COM  
AHS 17 158 188 125

Project Title  
**17 ROCKLEA DR  
PORT MELBOURNE  
LA ESQUINA PTY LTD**

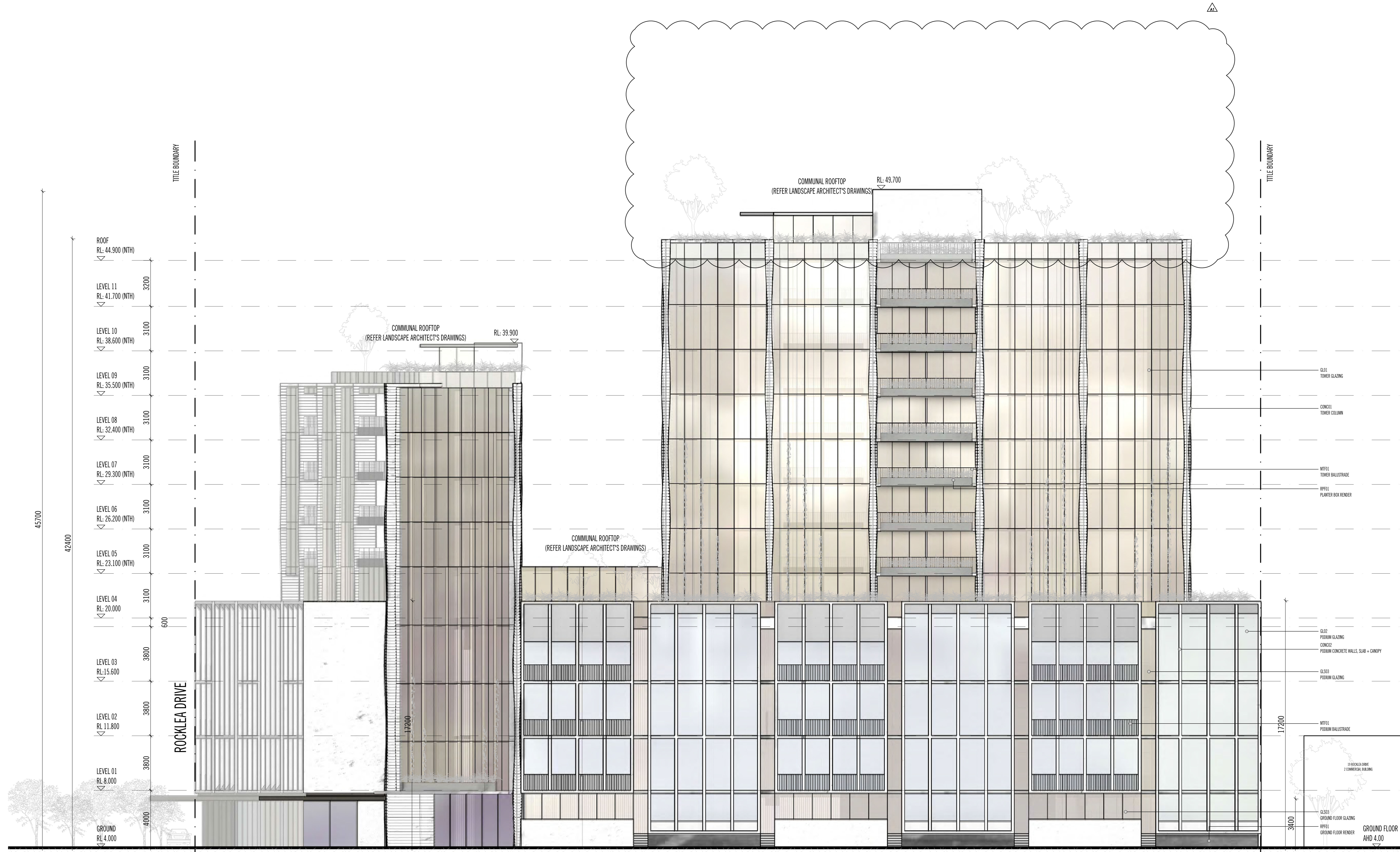
Project No.  
**16100**

Drawing No.  
**A0900**

Revision  
**A**

Project Title  
**SOUTH ELEVATION**

Date  
**Feb 11, 2020 - 5:30pm**



**SCHEDULE OF AMENDMENTS**

4 STORIES REMOVED
-------------------

Rev No.	Date	Reason for Issue	Issued To	Rev No.	Date	Reason for Issue	Issued To	Rev No.	Date	Reason for Issue	Issued To	Rev No.	Date	Reason for Issue	Issued To
1	05/01/19	ISSUED FOR TOWN PLANNING	MC												

**Conditions of Use**  
 This document may only be used in accordance with the terms of the Conditional Agreement set for the purposes and scope of the project. Any use of this document beyond the intended purpose is prohibited. The user of this document agrees to indemnify and hold the author harmless from and against all claims, damages, losses and expenses, including reasonable legal costs, arising from or in connection with the use of this document. The user of this document agrees to indemnify and hold the author harmless from and against all claims, damages, losses and expenses, including reasonable legal costs, arising from or in connection with the use of this document. The user of this document agrees to indemnify and hold the author harmless from and against all claims, damages, losses and expenses, including reasonable legal costs, arising from or in connection with the use of this document.

SCALE@A0 1:100 SCALE@A2 1:200  
**PRELIMINARY**  
**NOT FOR CONSTRUCTION**

**ELENBERG FRASER**  
 LEVEL 1, 160 QUEEN STREET  
 MELBOURNE VICTORIA 3000 AUSTRALIA  
 TEL +61 3 9600 2200 FAX +61 3 9600 2265  
 EMAIL MAIL@ELENBERGFRASER.COM  
 WWW.ELENBERGFRASER.COM  
 ABR 97 158 158 125

Project Title  
**17 ROCKLEA DR  
 PORT MELBOURNE  
 LA ESQUINA PTY LTD**

Drawing Title  
**EAST ELEVATION**

Project Number  
**16100**

Drawing Number  
**A0901**

Revision  
**A**

Date  
 Feb 11, 2020 - 9:33pm