

15:06:00 - 3/04/2020 5:49:30 PM

LEGEND

- GL01 CLEAR GLAZING
- GL02 GREY TINTED GLAZING
- GL03 LIGHT GREY TINTED GLAZING
- GL04 LIGHT GREY TINTED SPANDREL
- PF01 PAINT FINISH SILVER METALLIC
- PM02 DARK PERFORATED METAL
- MC01 METAL CLADDING
- PC01 PRE-CAST DARK CONCRETE
- BS01 BLUESTONE CLADDING



GL01
CLEAR GLAZING
REFER TO SMP



GL02
GREY TINTED GLAZING
REFER TO SMP



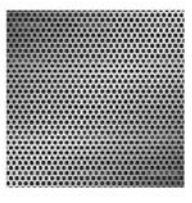
GL03
LIGHT GREY TINTED GLAZING
REFER TO SMP



GL04
LIGHT GREY TINTED SPANDREL
REFER TO SMP



PF01
PAINT FINISH
SILVER METALLIC FINISH



PM02
DARK PERFORATED SCREEN



MC01 -
PODIUM SCREEN
DARK METALLIC FINISHES



PC01
OFF-FORM CONCRETE
DARK COLOUR



BS01
BLUE STONE CLADDING

NOTE

GLAZING MATERIALS USED ON ALL EXTERNAL WALLS ARE CHOSEN TO PERFORM WELL IN ALL WEATHERS. LIGHT WHEN MEASURED AT AN ANGLE OF 90 DEGREES TO THE GLASS SURFACE. GLAZING TO ALL APARTMENTS TO BE CAPRAL FUTURELINE SD - GREY DOUBLE GLAZED LOW-E OR ALTERNATIVE PERFORMANCE INDICATED ON PAGE 40 OF SMP.

PROPOSED RL LEVELS CONSISTENT WITH AHD LEVELS.

FACADE WALLS ARE REQUIRED TO ACHIEVE AN RWY RATING AT LEAST 100DB(A) HIGHER THAN GLAZED ELEMENTS IN ACCORDANCE WITH THE ACOUSTIC REPORT.



CHT Architects Pty Ltd
44 Oxford Street
Collingwood VIC 3066
Post Office Box 1352
Collingwood VIC 3066
Telephone 03 9417 1944
Facsimile 03 9415 1847
info@chtarchitects.com.au
chtarchitects.com.au

Copyright © CHT Architects Pty Ltd.
The drawings, designs, and specifications and copyright therein are the property of CHT Architects Pty Ltd. and must not be used, copied, or reproduced wholly or in part without the express written permission of CHT Architects Pty Ltd.
Do not scale drawings. Use given dimensions only.
Any discrepancy in drawings or specifications shall be referred to CHT Architects Pty Ltd.

Project
AVION - MIXED USE DEVELOPMENT
245-251 NORMANBY ROAD, SOUTH MELBOURNE

Client
BLUE EARTH GROUP

No.	Date	Notes
1	09/11/2016	TOWN PLANNING AMENDMENTS
2	01/02/2017	TOWN PLANNING AMENDMENTS
3	22/11/2019	ENDORSEMENT
4	13/02/2020	TP RFI

Title
SOUTH EAST ELEVATION - WOODGATE ST

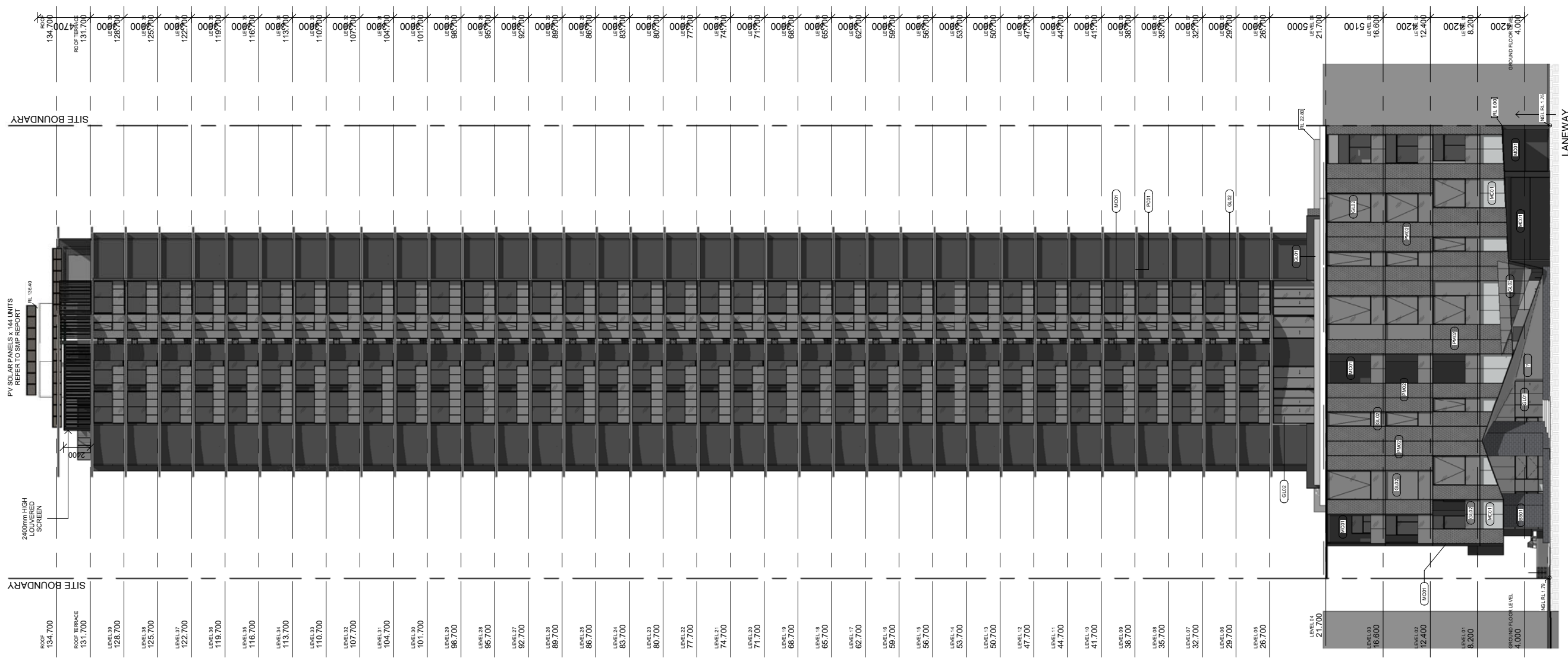
Sheet
**PRELIMINARY
NOT FOR CONSTRUCTION**

Sheet No.
TP2.02

Revision
I

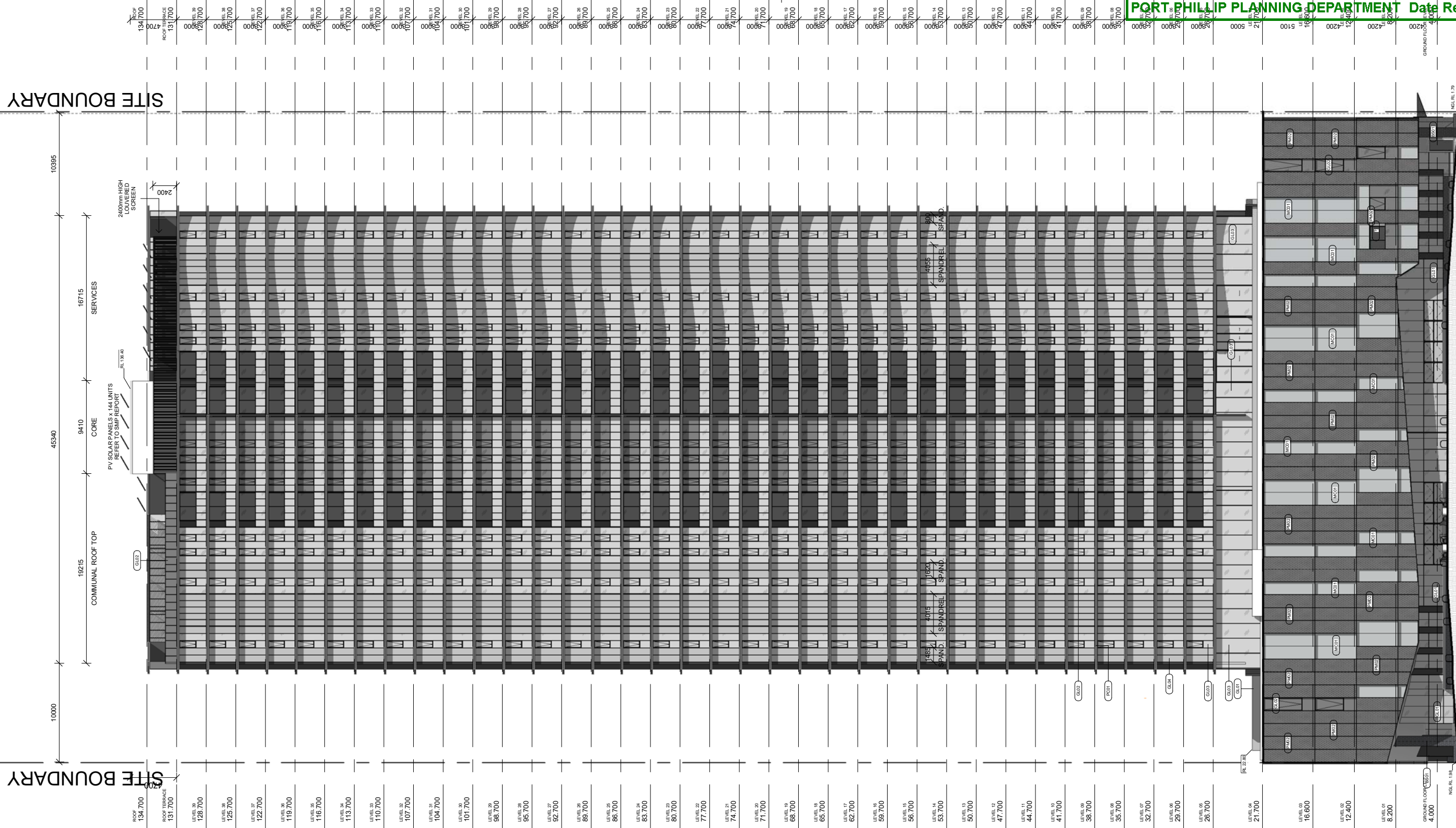
Scale
As indicated @ A1

Date
13/02/2020



15060

Drawn by: AutoChecked by: Checker



- GLO1 CLEAR GLAZING
- GLO2 GREY TINTED GLAZING
- GLO3 LIGHT GREY TINTED GLAZING
- GLO4 LIGHT GREY TINTED SPANDREL
- PF01 PAINT FINISH SILVER METALLIC
- PM02 DARK PERFORATED METAL
- MC01 METAL CLADDING
- PC01 PRE-CAST DARK CONCRETE
- BS01 BLUESTONE CLADDING



GLO1
CLEAR GLAZING
REFER TO SMP



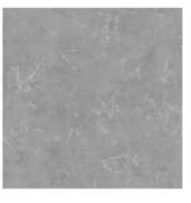
GLO2
GREY TINTED GLAZING
REFER TO SMP



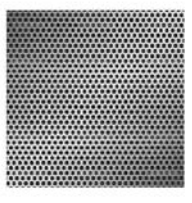
GLO3
LIGHT GREY TINTED GLAZING
REFER TO SMP



GLO4
LIGHT GREY TINTED SPANDREL
REFER TO SMP



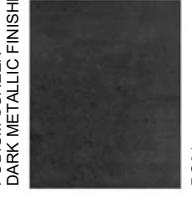
PF01
PAINT FINISH
SILVER METALLIC FINISH



PM02
DARK PERFORATED SCREEN



MC01 -
METAL CLADDING



PC01
PRE-CAST DARK CONCRETE
DARK COLOUR



BS01
BLUESTONE CLADDING

NOTE
GLAZING MATERIALS USED ON ALL EXTERNAL WALLS ARE CHOSEN TO PERFORM WELL IN TERMS OF U-VALUE AND LIGHT TRANSMITTANCE. LIGHT WHEN MEASURED AT AN ANGLE OF 90 DEGREES TO THE GLASS SURFACE.
GLAZING TO ALL APARTMENTS TO BE 'CAPRAL FUTURELINE SD - GREY DOUBLE GLAZED LOW-E OR ALTERNATIVE' TO ACHIEVE U-VALUE AND LIGHT TRANSMITTANCE PERFORMANCE INDICATED ON PAGE 40 OF SMP.
PROPOSED RL LEVELS CONSISTENT WITH AHD LEVELS.
FACADE WALLS ARE REQUIRED TO ACHIEVE AN RWY RATING AT LEAST 100(BA) HIGHER THAN GLAZED ELEMENTS IN ACCORDANCE WITH THE ACOUSTIC REPORT.

CHT ARCHITECTS
CHT Architects Pty Ltd
ABN 29 108 008 519
Architecture
Interior Design
Urban Design

CHT Architects Pty Ltd
44 Oxford Street
Collingwood VIC 3066
Post Office Box 1352
Collingwood VIC 3066
Telephone 03 9417 1944
Facsimile 03 9415 1847
info@chtarchitects.com.au
chtarchitects.com.au

Copyright © CHT Architects Pty Ltd.
The drawings, designs, and specifications and copyright therein are the property of CHT Architects Pty Ltd. and must not be used, copied, or reproduced wholly or in part without the express written permission of CHT Architects Pty Ltd.
Do not scale drawings. Use given dimensions only.
Any discrepancy in drawings or specifications shall be referred to CHT Architects Pty Ltd.

Project
AVION - MIXED USE DEVELOPMENT
245-251 NORMANBY ROAD, SOUTH MELBOURNE
Client
BLUE EARTH GROUP

No.	Date	Notes
1	09/11/2016	TOWN PLANNING AMENDMENTS
2	01/12/2017	TOWN PLANNING AMENDMENTS
3	22/11/2019	ENDORSEMENT
4	13/02/2020	TP RFI

Title
SOUTH WEST ELEVATION - LANEWAY
Sheet
PRELIMINARY NOT FOR CONSTRUCTION

Sheet No.
TP2.03
Revision
I
Scale
As indicated@A1
Date
13/02/2020

15060
Drawn by:Auto/Checked by:Checker

15:06:00 - 3/04/2020 5:53:32 PM

LEGEND

- GLO1 CLEAR GLAZING
- GLO2 GREY TINTED GLAZING
- GLO3 LIGHT GREY TINTED GLAZING
- GLO4 LIGHT GREY TINTED SPANDREL
- PF01 PAINT FINISH SILVER METALLIC
- PM02 DARK PERFORATED METAL
- MC01 METAL CLADDING
- PC01 PRE-CAST DARK CONCRETE
- BS01 BLUESTONE CLADDING



GLO1
CLEAR GLAZING
REFER TO SMP



GLO2
GREY TINTED GLAZING
REFER TO SMP



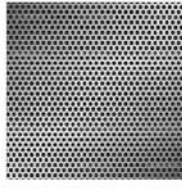
GLO3
LIGHT GREY TINTED GLAZING
REFER TO SMP



GLO4
LIGHT GREY TINTED SPANDREL
REFER TO SMP



PF01
PAINT FINISH
SILVER METALLIC FINISH



PM02
DARK PERFORATED SCREEN



MC01 -
PODIUM SCREEN
DARK METALLIC FINISHES



PC01
OFF-FORM CONCRETE
DARK COLOUR



BS01
BLUE STONE CLADDING

NOTE

GLAZING MATERIALS USED ON ALL EXTERNAL WALLS ARE CHOSEN TO PERFORM WELL IN ALL WEATHER CONDITIONS. LIGHT WHEN MEASURED AT AN ANGLE OF 90 DEGREES TO THE GLASS SURFACE. GLAZING TO ALL APARTMENTS TO BE CAPRAL FUTURELINE SD - GREY DOUBLE LOW-E OR ALTERNATIVE PERFORMANCE INDICATED ON PAGE 40 OF SMP. PROPOSED RL LEVELS CONSISTENT WITH AHD LEVELS. FACADE WALLS ARE REQUIRED TO ACHIEVE AN RWY RATING AT LEAST 100(BA) HIGHER THAN GLAZED ELEMENTS IN ACCORDANCE WITH THE ACOUSTIC REPORT.



CHT Architects Pty Ltd
44 Oxford Street
Collingwood VIC 3066
Post Office Box 1352
Collingwood VIC 3066
Telephone 03 9417 1944
Facsimile 03 9415 1847
info@chtarchitects.com.au
chtarchitects.com.au

Copyright © CHT Architects Pty Ltd.
The drawings, designs, and specifications and copyright therein are the property of CHT Architects Pty Ltd. and must not be used, copied, or reproduced wholly or in part without the express written permission of CHT Architects Pty Ltd.
Do not scale drawings. Use given dimensions only.
Any discrepancy in drawings or specifications shall be referred to CHT Architects Pty Ltd.

Project

AVION - MIXED USE DEVELOPMENT
245-251 NORMANBY ROAD, SOUTH MELBOURNE

Client

BLUE EARTH GROUP

Amendments

No.	Date	Notes
1	02/11/2016	TOWN PLANNING AMENDMENTS
2	03/12/2017	TOWN PLANNING AMENDMENTS
3	22/11/2019	ENDORSEMENT
4	13/02/2020	TP RFI

Title

NORTH WEST ELEVATION -
NORMANBY RD

Sheet

PRELIMINARY
NOT FOR CONSTRUCTION

Sheet No.

TP2.04

Revision

1

Scale

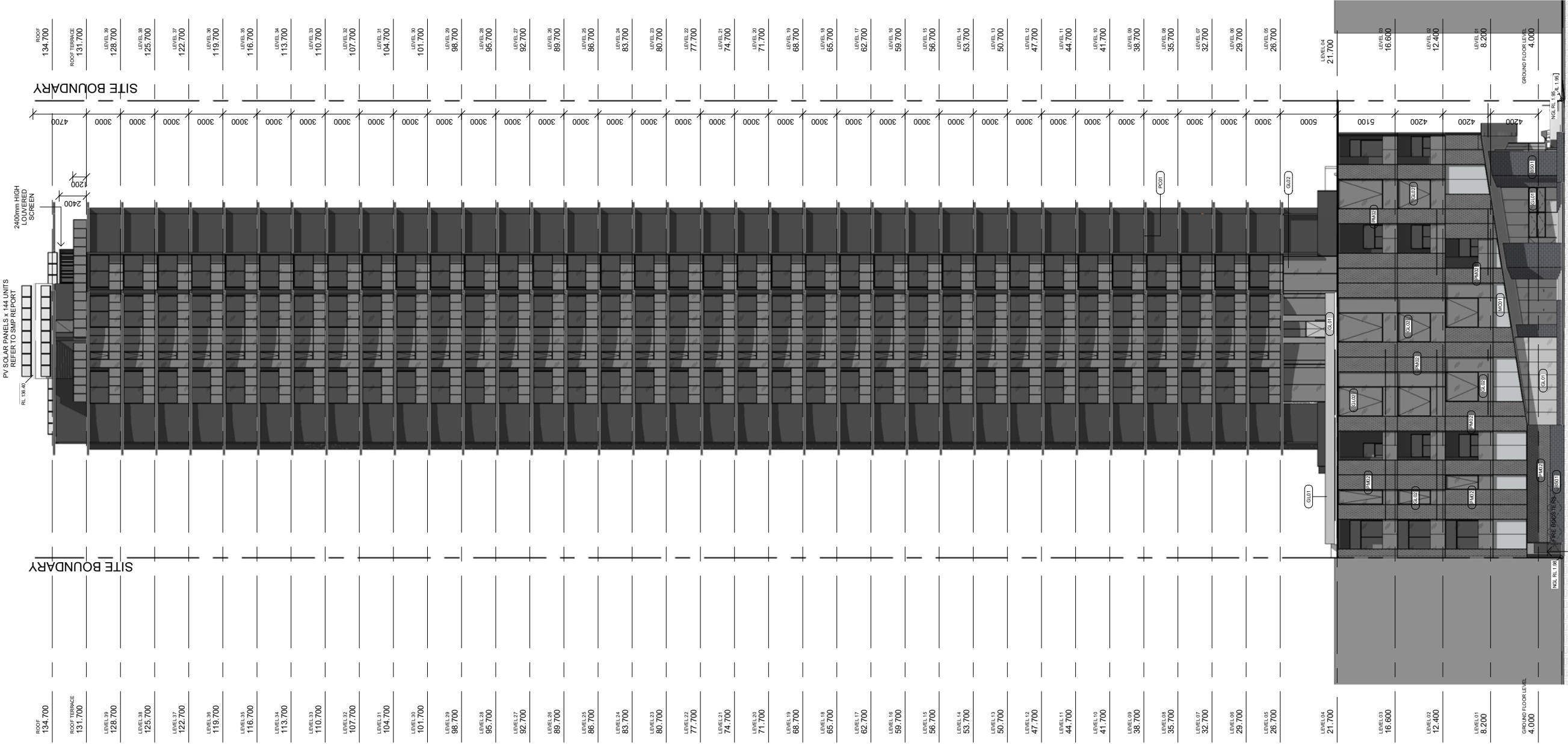
As indicated@A1

Date

13/02/2020

Drawn by:Auto/Checked by:Checker

10000 20240 10000



15060















