

SCHEDULE OF AMENDMENTS

4 STORIES REMOVED

Rev No.	Date	Reason for Issue	Issued to	Rev No.	Date	Reason for Issue
1	01/03/19	ISSUED FOR TOWN PLANNING	MC			
2	03/03/19	ISSUED FOR TOWN PLANNING				

Qualities of the drawings and the work shall be as specified in the terms of the Commonwealth Standard Code of Practice and the terms of the contract. The contractor shall be responsible for the work and for the accuracy of the drawings. The contractor shall be responsible for the work and for the accuracy of the drawings. The contractor shall be responsible for the work and for the accuracy of the drawings.

SCALE@A0 1:100 SCALE@A2 1:200

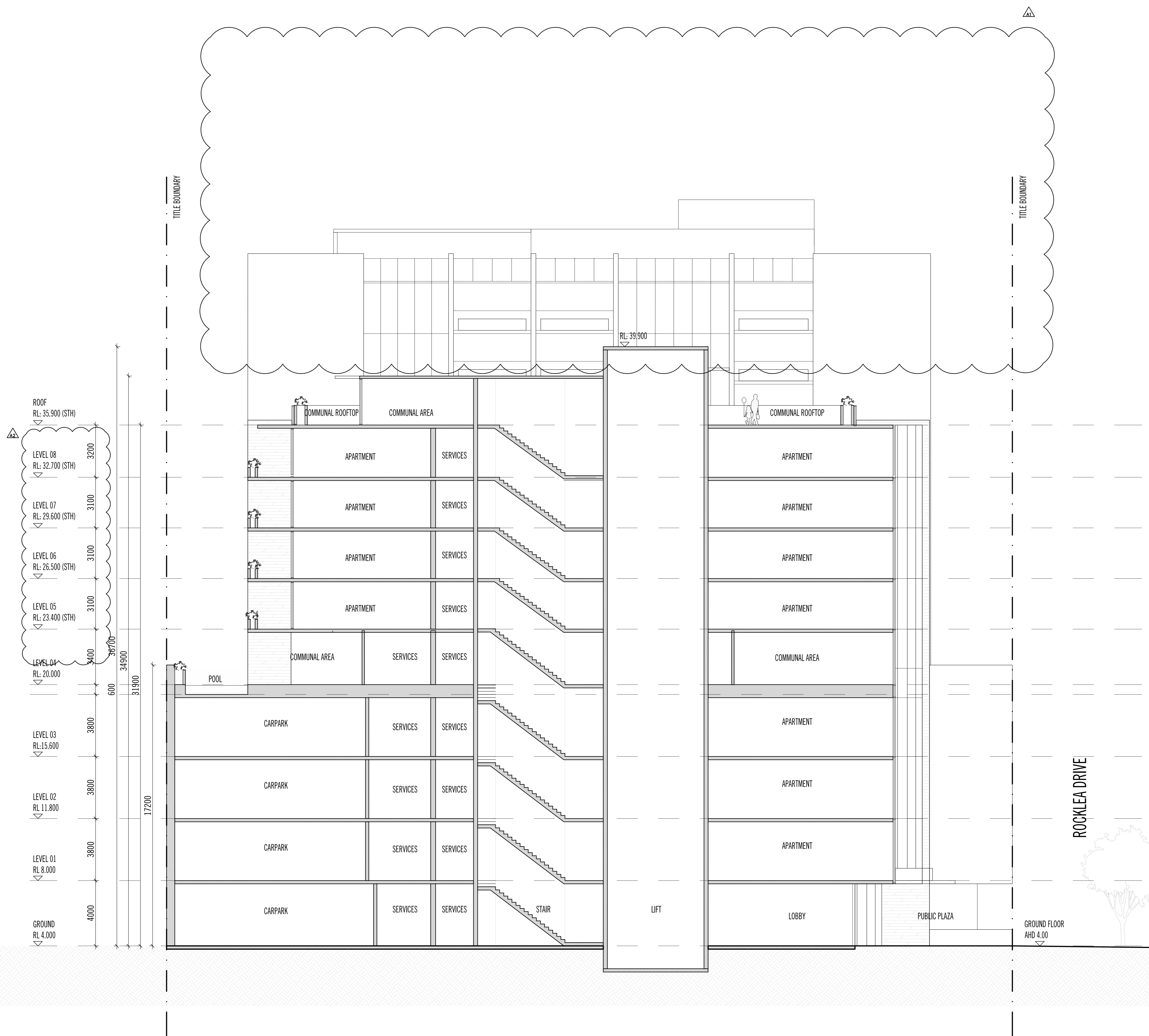
PRELIMINARY NOT FOR CONSTRUCTION

Report any discrepancies to the Architect for resolution before proceeding with the work.

ELENBERG FRASER
 LEVEL 1, 160 QUEEN STREET
 MELBOURNE VICTORIA 3000 AUSTRALIA
 TEL +61 3 9000 2200 FAX +61 3 9000 2205
 EMAIL MAIL@ELENBERGFRASER.COM
 WWW.ELENBERGFRASER.COM
ABN 57 158 108 105

Project Title 17 ROCKLEA DR PORT MELBOURNE LA ESQUINA PTY LTD	
Project Number 16100	Drawing Number A0950
Project Title TP	Revision A

Feb 11, 2020 - 9:35pm



No.	Date	Reason for Issue	Issued to	No.	Date	Reason for Issue	Issued to	No.	Date	Reason for Issue	Issued to	No.	Date	Reason for Issue	Issued to
1	05/08/19	ISSUED FOR TOWN PLANNING	UC												
2	02/02/20	ISSUED FOR TOWN PLANNING	UC												

SCHEDULE OF AMENDMENTS	
▲	4 STORIES REMOVED
▲	SLAB LEVELS REVISED

Condition of Use
 This document may be used in accordance with the terms of the Conditional Approval for the purposes and stages of the project as set out in the Conditional Approval. It is not to be used for any other purpose without the written consent of Elenberg Fraser.
 1. This document and all attached property rights in it remain the property of Elenberg Fraser and may not be copied, used, distributed, printed or otherwise made available to the public without the written consent of Elenberg Fraser.
 2. Each user must:
 (a) not use this document, or any information contained in it, for any other purpose;
 (b) not use this document in conjunction with any other project documents, specifications and information from any source;
 (c) ensure that any information contained in this document is accurate, complete and up-to-date;
 (d) ensure that any information contained in this document is accurate, complete and up-to-date.
 3. Elenberg Fraser does not warrant or guarantee the accuracy, completeness or reliability of the information contained in this document.
 4. The information contained in this document is for informational purposes only. It does not constitute an offer of any financial product or service.
 5. The information contained in this document is for informational purposes only. It does not constitute an offer of any financial product or service.
 6. Elenberg Fraser does not warrant or guarantee the accuracy, completeness or reliability of the information contained in this document.
 7. Elenberg Fraser does not warrant or guarantee the accuracy, completeness or reliability of the information contained in this document.
 8. Elenberg Fraser does not warrant or guarantee the accuracy, completeness or reliability of the information contained in this document.
 9. Elenberg Fraser does not warrant or guarantee the accuracy, completeness or reliability of the information contained in this document.
 10. Elenberg Fraser does not warrant or guarantee the accuracy, completeness or reliability of the information contained in this document.

SCALE@A0 1:100 SCALE@A2 1:200
PRELIMINARY
NOT FOR CONSTRUCTION
 Report any discrepancies to the Architect for resolution before proceeding with the work.
 Copyright ©

ELENBERG FRASER
 LEVEL 1, 160 QUEEN STREET
 MELBOURNE VICTORIA 3000 AUSTRALIA
 TEL +61 3 9600 2200 FAX +61 3 9600 2265
 EMAIL MAIL@ELENBERGFRASER.COM
 WWW.ELENBERGFRASER.COM
 AFR 97 558 108 105

Project Title
17 ROCKLEA DR
PORT MELBOURNE
LA ESQUINA PTY LTD

Project No
16100

Drawn By
A0951

Scale
A

Project Title
SECTION BB

Project No
16100

Drawn By
A0951

Scale
A

Date
 Feb 11, 2020 - 5:36pm