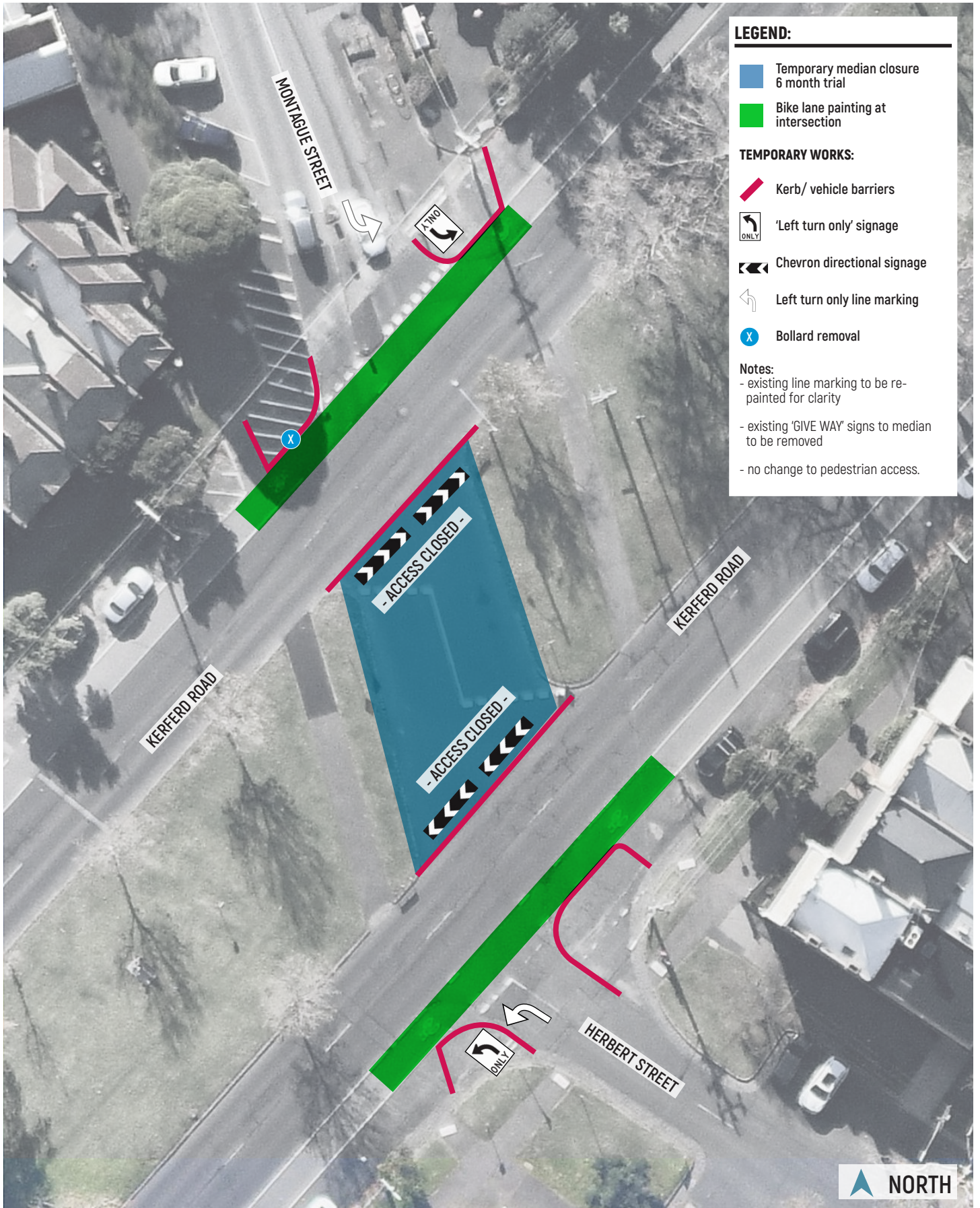


# KERFERD ROAD

FOR INFORMATION

## SAFETY TRIAL WORKS

Rev3 16.12.20



**LEGEND:**

- Temporary median closure  
6 month trial
- Bike lane painting at  
intersection

**TEMPORARY WORKS:**

- Kerb/ vehicle barriers
- 'Left turn only' signage
- Chevron directional signage
- Left turn only line marking
- X Bollard removal

**Notes:**

- existing line marking to be re-painted for clarity
- existing 'GIVE WAY' signs to median to be removed
- no change to pedestrian access.