

MATERIAL SCHEDULE



TOWN PLANNING



CHT Architects Pty Ltd  
44 Oxford Street  
Collingwood VIC 3066  
Telephone 03 9417 1944  
Facsimile 03 9415 1847  
info@chtArchitects.com.au  
chtArchitects.com.au

Copyright © CHT Architects Pty Ltd.  
The drawings, designs, and specifications and copyright therein are the property of CHT Architects Pty Ltd, and must not be used, copied, or reproduced wholly or in part without the express written permission of CHT Architects Pty Ltd.  
Do not scale drawings. Use given dimensions only.  
Any discrepancy in drawings or specifications shall be referred to CHT Architects Pty Ltd.

Project **SALMON STREET**  
101 SALMON STREET, FISHERMANS BEND  
Client **W. W. SIDWELL PTY LTD**

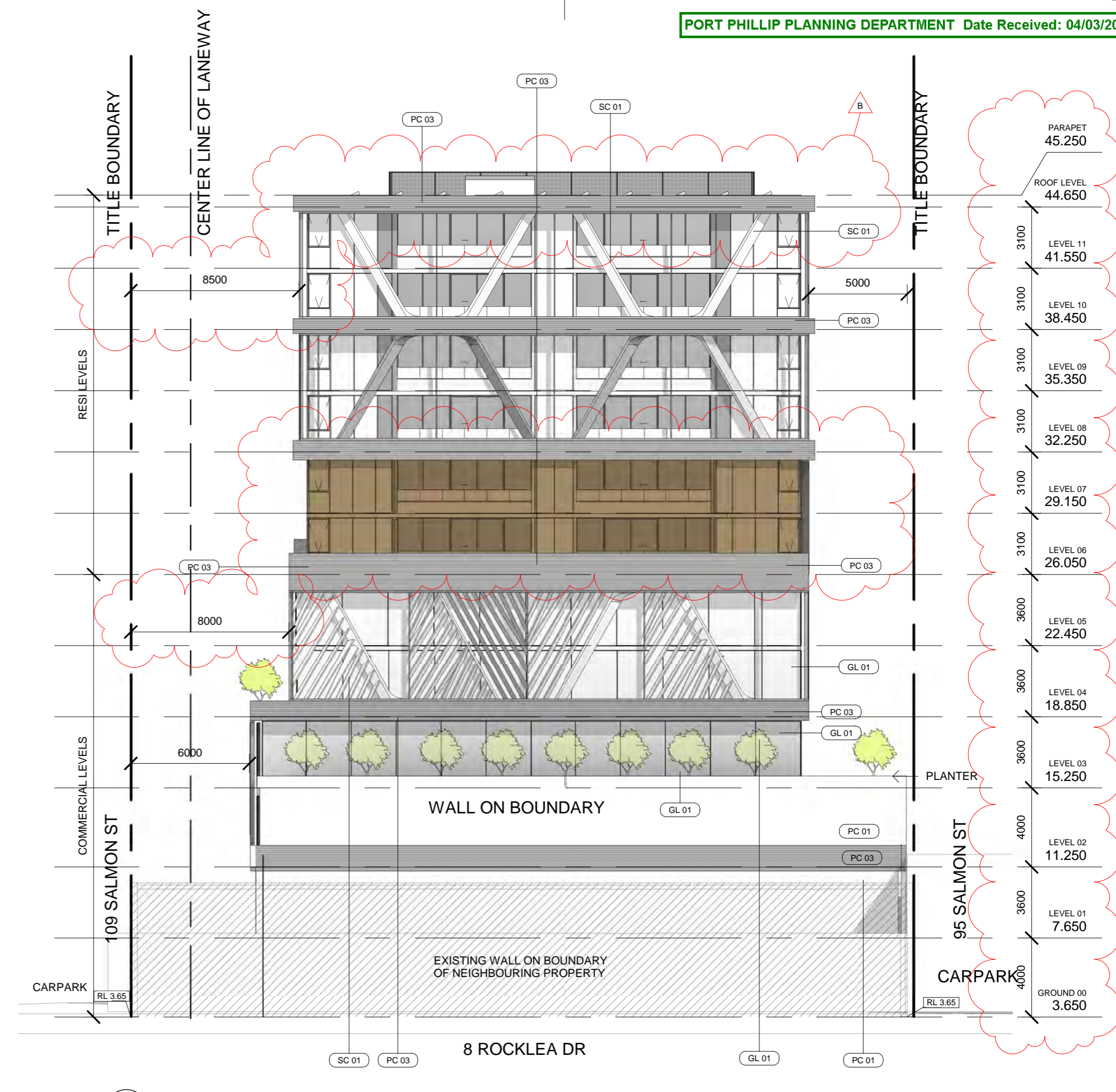
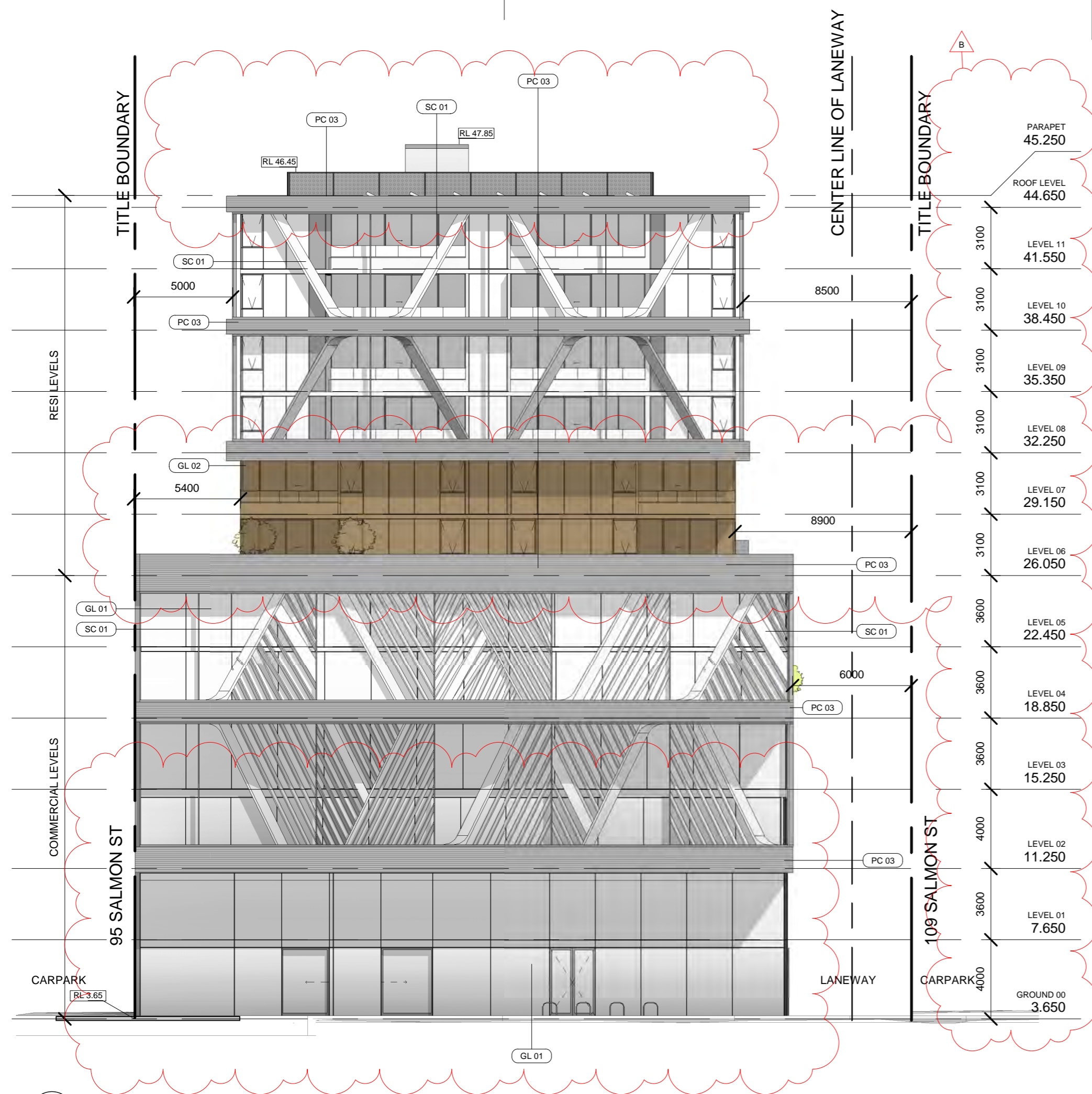
Amendments No.	Date	Notes
A	10/05/2019	TOWN PLANNING REVISION - A
B	04/12/19	DELWP ISSUE
C	30/01/2020	TOWN PLANNING REVISION - B

Title **NORTH ELEVATION - LANEWAY**  
Sheet **PRELIMINARY NOT FOR CONSTRUCTION**

Sheet No. **TP2.01**  
Scale **As indicated @ A2**  
Date **30/01/2020**

Revision **C**

**19010**



1 EAST ELEVATION - SALMON ST  
SCALE 1 : 200

2 WEST ELEVATION  
SCALE 1 : 200

MATERIAL SCHEDULE



CHT Architects Pty Ltd  
44 Oxford Street  
Collingwood VIC 3066  
Telephone 03 9417 1944  
Facsimile 03 9415 1847  
info@chtArchitects.com.au  
chtArchitects.com.au

Copyright © CHT Architects Pty Ltd.  
The drawings, designs, and specifications and copyright therein are the property of CHT Architects Pty Ltd, and must not be used, copied, or reproduced wholly or in part without the express written permission of CHT Architects Pty Ltd.  
Do not scale drawings. Use given dimensions only.  
Any discrepancy in drawings or specifications shall be referred to CHT Architects Pty Ltd.

Project  
**SALMON STREET**  
101 SALMON STREET, FISHERMANS BEND  
Client  
**W. W. SIDWELL PTY LTD**

Amendments		Notes
No.	Date	
A	10/05/2019	TOWN PLANNING REVISION - A
B	04/12/19	DELWP ISSUE
C	30/01/2020	TOWN PLANNING REVISION - B

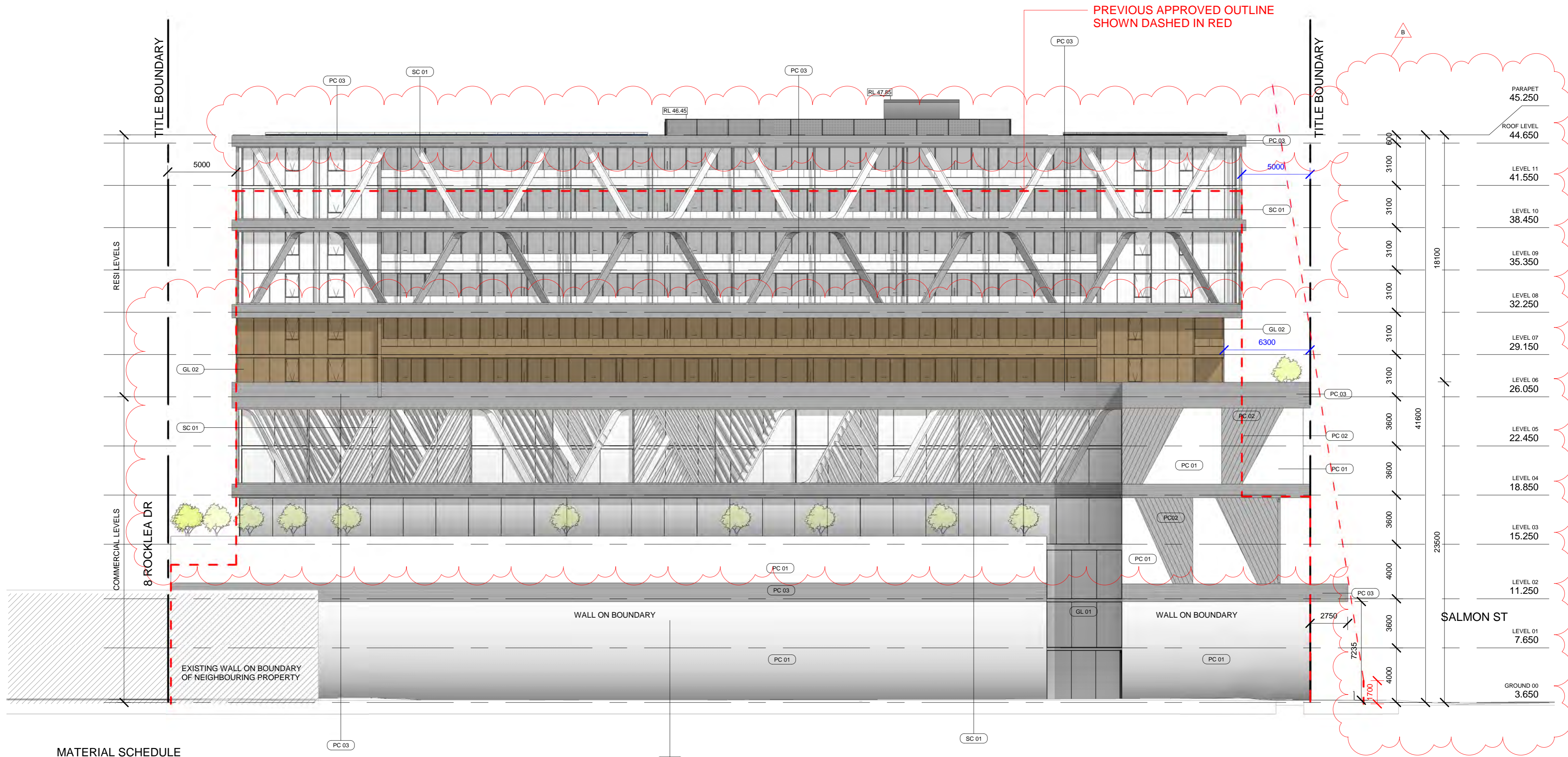
Title  
**EAST & WEST ELEVATION**  
Sheet  
**PRELIMINARY  
NOT FOR CONSTRUCTION**

Sheet No.  
**TP2.02**  
Scale  
**As indicated@A2**  
Date  
**30/01/2020**

TOWN PLANNING

Revision  
**C**

19010



MATERIAL SCHEDULE



19010--17/02/2020 5:43:28 PM--Author



**CHT Architects Pty Ltd**  
44 Oxford Street  
Collingwood VIC 3066  
Telephone 03 9417 1944  
Facsimile 03 9415 1847  
info@chtArchitects.com.au  
chtArchitects.com.au

Copyright © CHT Architects Pty Ltd.  
The drawings, designs, and specifications and copyright therein are the property of CHT Architects Pty Ltd, and must not be used, copied, or reproduced wholly or in part without the express written permission of CHT Architects Pty Ltd.  
Do not scale drawings. Use given dimensions only.  
Any discrepancy in drawings or specifications shall be referred to CHT Architects Pty Ltd.

Project **SALMON STREET**  
101 SALMON STREET, FISHERMANS BEND  
Client **W. W. SIDWELL PTY LTD**

Amendments		Notes
No.	Date	
A	10/05/2019	TOWN PLANNING REVISION - A
B	15/08/19	TP RFI
C	30/01/2020	TOWN PLANNING REVISION - B

Title **SOUTH ELEVATION**  
Sheet **PRELIMINARY NOT FOR CONSTRUCTION**

Sheet No. **TP2.03**  
Scale **As indicated@A2**  
Date **30/01/2020**

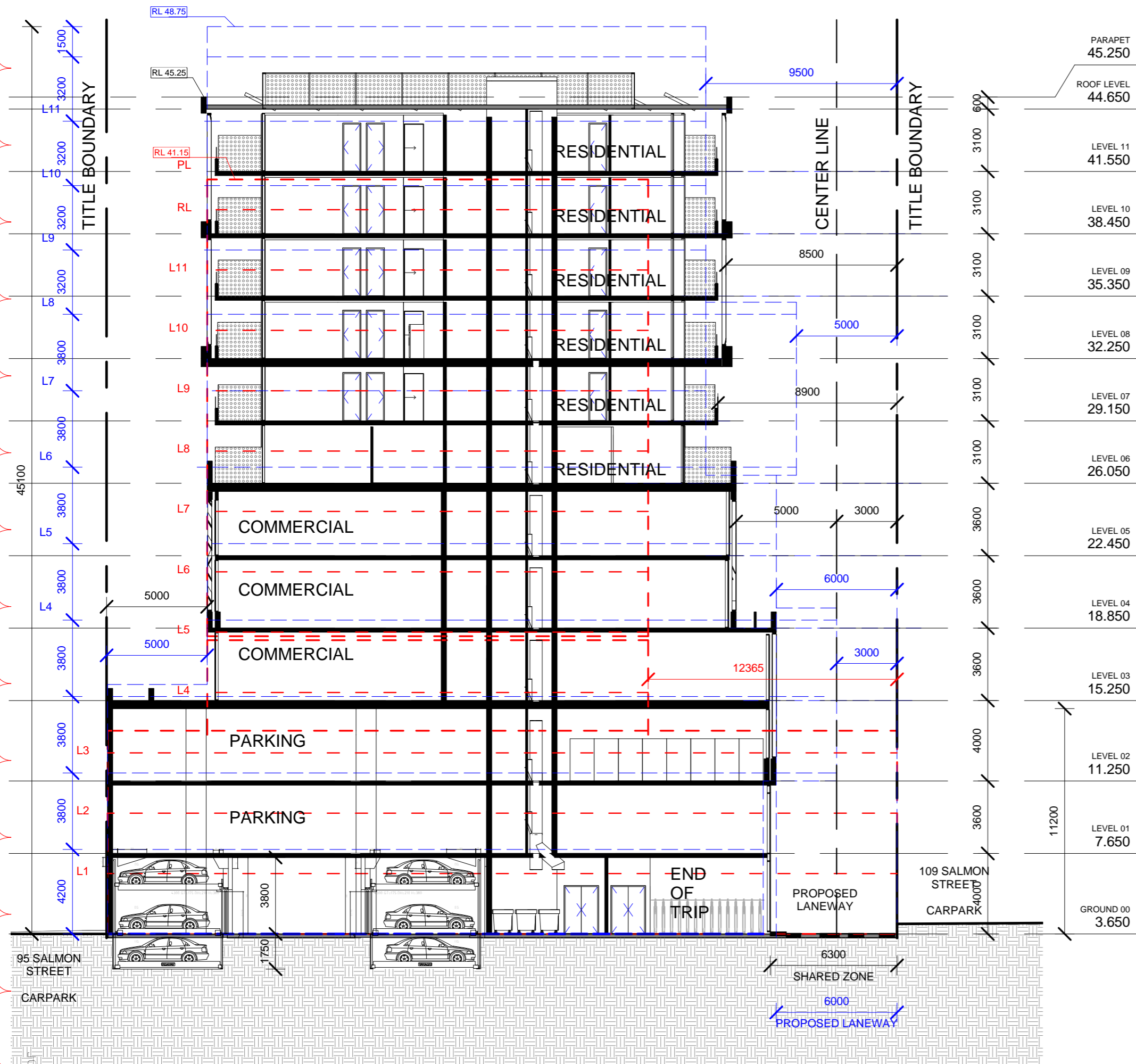
TOWN PLANNING

Revision **C**

**19010**

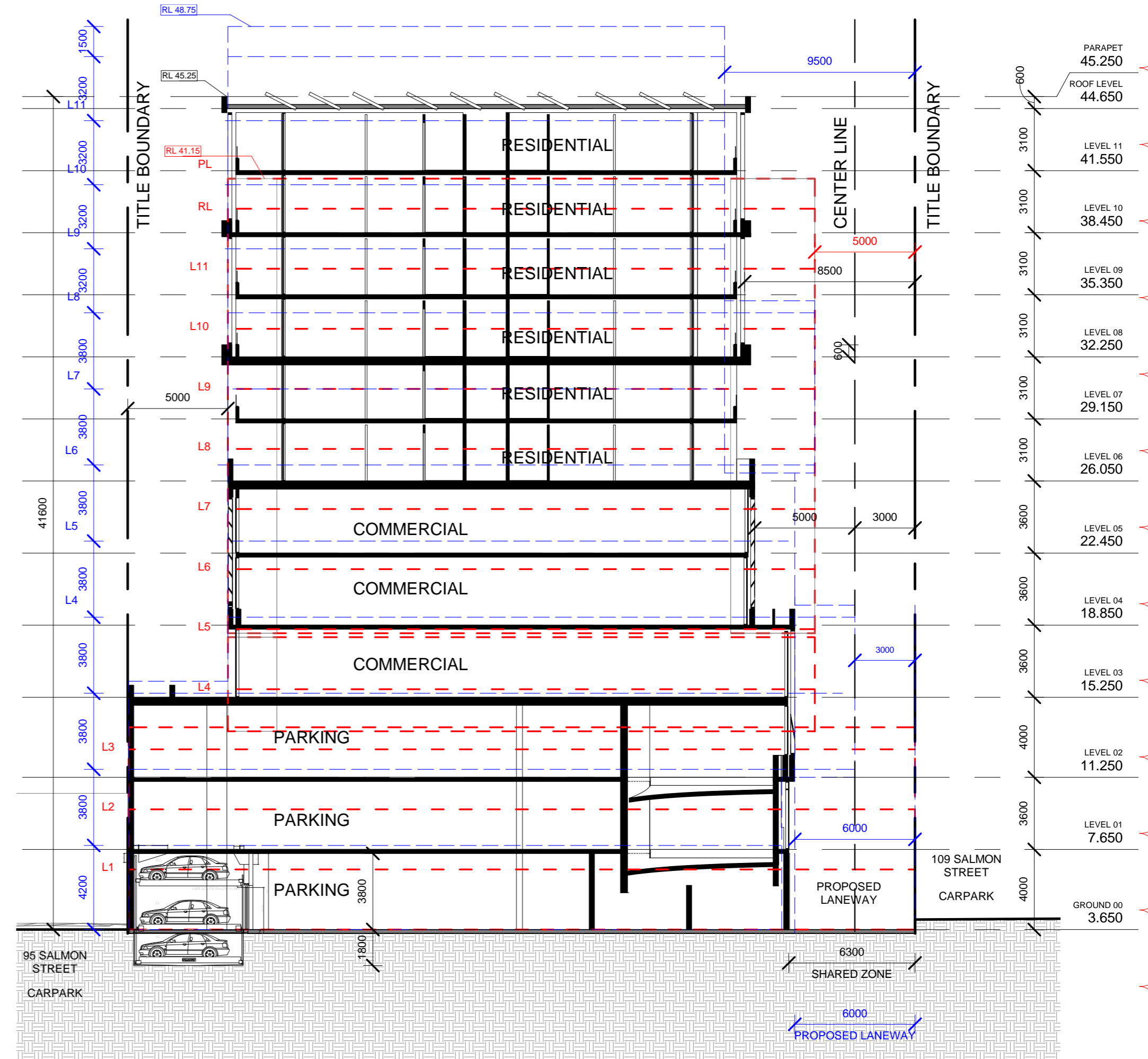
PREVIOUS APPROVED OUTLINE  
SHOWN DASHED IN RED

PREVIOUSLY SUBMITTED BUILDING  
OUTLINE SHOWN DASHED IN BLUE



PREVIOUS APPROVED OUTLINE  
SHOWN DASHED IN RED

PREVIOUSLY SUBMITTED BUILDING  
OUTLINE SHOWN DASHED IN BLUE



A SECTION AA  
SCALE 1 : 200

B SECTION BB  
SCALE 1 : 200

19010-17/02/2020 5:43:40 PM - Auth



CHT Architects Pty Ltd  
44 Oxford Street  
Collingwood VIC 3066  
Telephone 03 9417 1944  
Facsimile 03 9415 1847  
info@chtarchitects.com.au  
chtarchitects.com.au

Copyright © CHT Architects Pty Ltd.  
The drawings, designs, and specifications and copyright therein are the property of CHT Architects Pty Ltd, and must not be used, copied, or reproduced wholly or in part without the express written permission of CHT Architects Pty Ltd.  
Do not scale drawings. Use given dimensions only.  
Any discrepancy in drawings or specifications shall be referred to CHT Architects Pty Ltd.

Project SALMON STREET  
101 SALMON STREET, FISHERMANS BEND  
Client W. W. SIDWELL PTY LTD

Amendments No.	Date	Notes
A	10/05/2019	TOWN PLANNING REVISION - A
B	15/08/19	TP RFI
C	04/12/19	DELWP ISSUE
D	30/01/2020	TOWN PLANNING REVISION - B

Title SECTIONS  
Sheet PRELIMINARY  
NOT FOR CONSTRUCTION

Sheet No. TP3.01  
Scale 1 : 200@A2  
Date 30/01/2020

Revision D

TOWN PLANNING

19010